



# City of Visalia

## Introduction to Redistricting

September 20, 2021

Dr. Jeff Tilton, Senior Consultant  
National Demographics Corporation

# Redistricting Process

---

Step	Description
<b>Initial Hearing</b> August 23, 2021 <i>7 p.m.</i>	<ul style="list-style-type: none"><li>• Staff/Measure N Oversight Committee</li><li>• Held prior to release of draft maps</li><li>• Educate and solicit input on the communities in the Districts</li></ul>
<b>Initial Hearing</b> September 20, 2021 <i>7 p.m.</i>	<ul style="list-style-type: none"><li>• City Council</li><li>• Held prior to release of draft maps</li><li>• Educate and solicit input on the communities in the Districts</li></ul>
<b>Census Data Release</b> August 12, 2021	<ul style="list-style-type: none"><li>• Census Bureau releases official 2020 Census population data</li></ul>
<b>California Data Release</b> September 2021	<ul style="list-style-type: none"><li>• California Statewide Database releases California's official 'prisoner-adjusted' 2020 redistricting data</li></ul>

**Dates/locations subject to change**

# Redistricting Process (continued)

---

Step	Description
<b>Mapping Workshops</b>	<ul style="list-style-type: none"><li>• Discuss communities of interest, neighborhoods; learn the mapping tools</li><li>• October 13, 6 p.m.</li><li>• October 23, 10 a.m.</li></ul>
<b>Draft Map Hearing</b> December 6, 2021 <i>7 p.m.</i>	<ul style="list-style-type: none"><li>• Discuss and revise the draft maps</li><li>• Discuss the election sequence</li><li>• Deadline to submit draft maps: November 22, 2021, 5 p.m.</li><li>• Post draft maps by November 29, 2021, 5 p.m.</li></ul>
<b>Draft Map Hearing</b> January 10, 2022 <i>7 p.m.</i>	<ul style="list-style-type: none"><li>• Discuss and select final map</li><li>• Discuss and determine election sequence</li><li>• Deadline to submit draft maps: December 27, 2021, 5 p.m.</li><li>• Post draft maps by January 3, 2022, 5 p.m.</li></ul>

**Dates/locations subject to change**

# Redistricting Rules and Goals

## 1. Federal Laws

- **Equal Population**
- **Federal Voting Rights Act**
- **No Racial Gerrymandering**



## 2. California Criteria for Cities

- 1. Geographically contiguous**
- 2. Undivided neighborhoods and “communities of interest”**  
(Socio-economic geographic areas that should be kept together)
- 3. Easily identifiable boundaries**
- 4. Compact**  
(Do not bypass one group of people to get to a more distant group of people)

## 3. Other Traditional Redistricting Principles

- **Minimize voters shifted to different election years**
- **Respect voters’ choices / continuity in office**
- **Future population growth**
- **Preserving the core of existing districts**

**Prohibited:** “Shall not favor or discriminate against a political party.”

# Defining Neighborhoods

---

**1<sup>st</sup> Question: What is your neighborhood?**

**2<sup>nd</sup> Question: What are its geographic boundaries?**

**Examples of physical features defining a neighborhood boundary:**

- Natural neighborhood dividing lines, such as highway or major roads, rivers, canals and/or hills
- Areas around parks or schools
- Other neighborhood landmarks

**In the absence of public testimony, planning records and other similar documents may provide definition.**



# Beyond Neighborhoods: Defining Communities of Interest

---

## 1<sup>st</sup> Question: What defines your community?

- Geographic Area, plus
- Shared issue or characteristic
  - Shared social or economic interest
  - Impacted by city policies
- Tell us “your community’s story”

## 2<sup>nd</sup> Question: Would this community benefit from being “included within a single district for purposes of its effective and fair representation”?

- Or would it benefit more from having multiple representatives?

Definitions of Communities of Interest may not include relationships with political parties, incumbents, or political candidates.

# Possible Neighborhoods / Communities

# Public Mapping and Map Review Tools

---

- **Different tools for different purposes**
- **Different tools for different levels of technical skill and interest**
  - Simple “review draft maps” tool
  - Easy-to-use “Draw your neighborhood” tool
  - Paper- and Excel-based simple “Draw a draft map” tools
  - Powerful, data-rich “Draw a draft map” tool

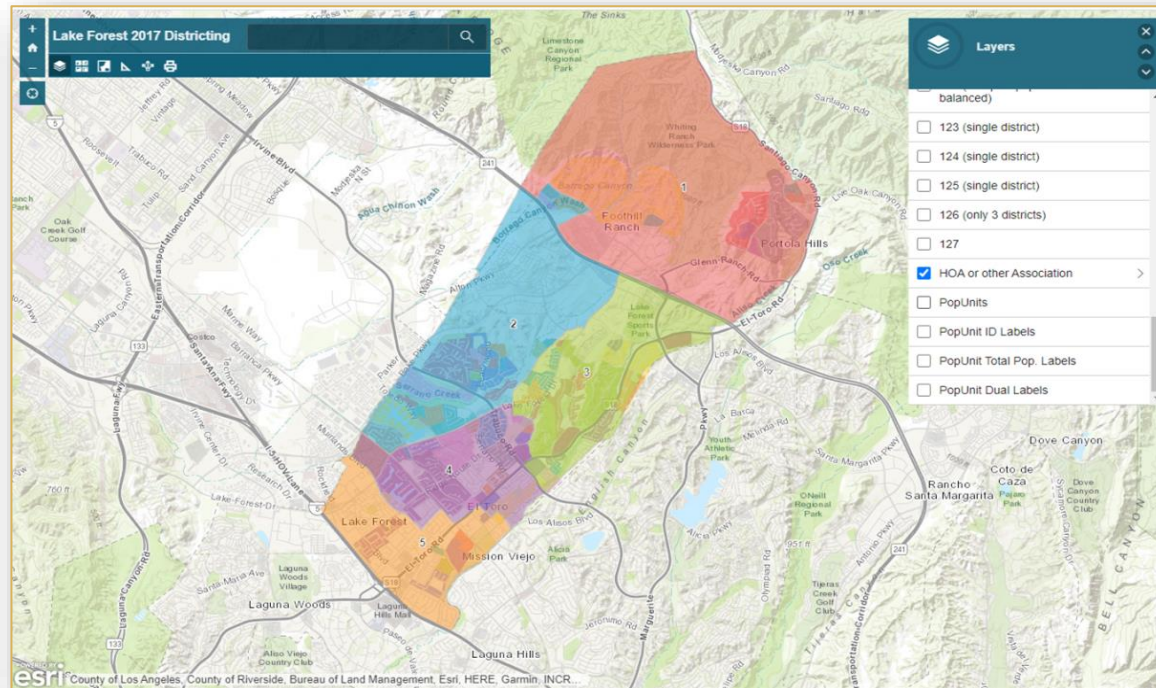
Whether you use the powerful (but complicated) online mapping tool, Excel, the paper kit, or just draw on a napkin, we welcome your maps!



# Simple Map Review Tool

## Online Interactive Review Map

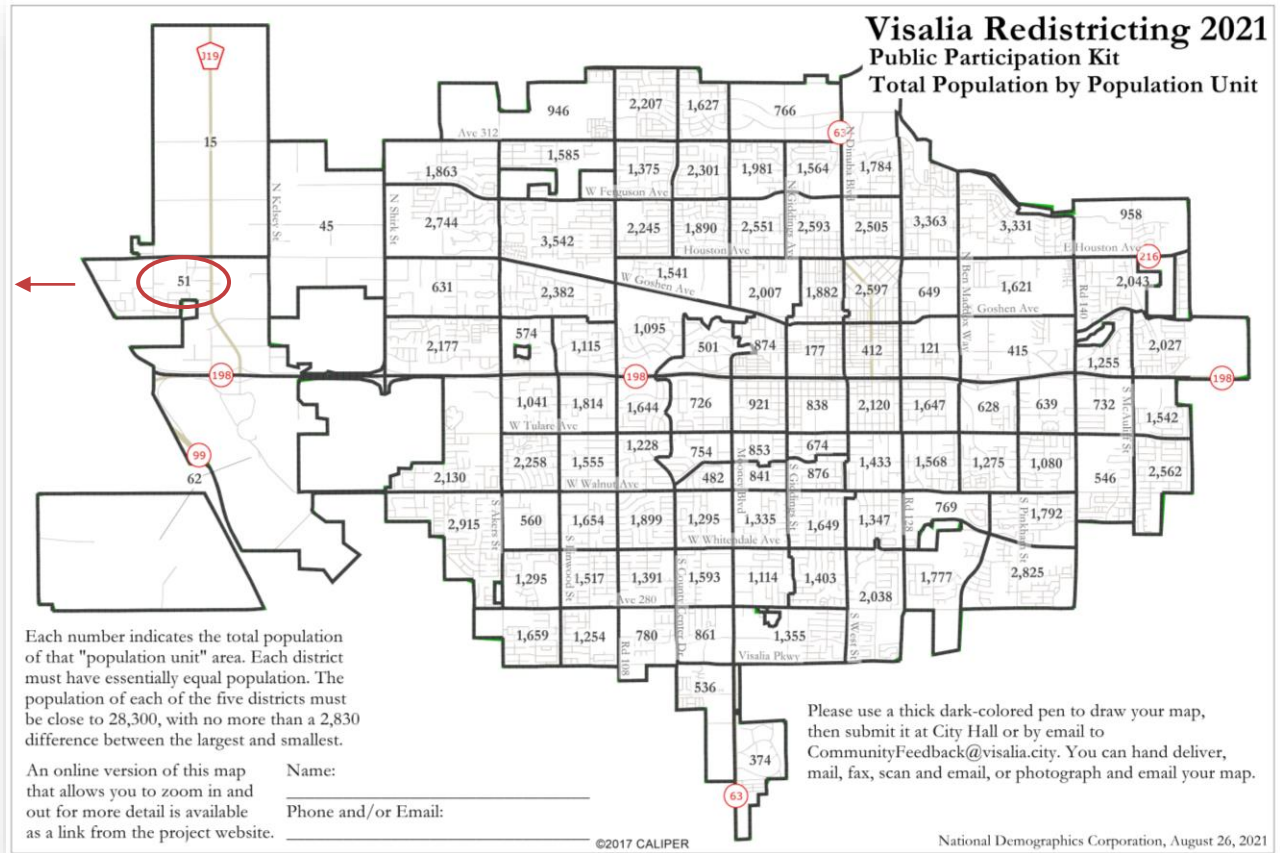
- ESRI's "ArcGIS Online" – similar to Google Maps in ease of use
- Used to review, analyze and compare maps, not to create them
- Includes overlays of "community of interest" and other data



# Simple Map Drawing Tool

## Paper “Public Participation Kit”

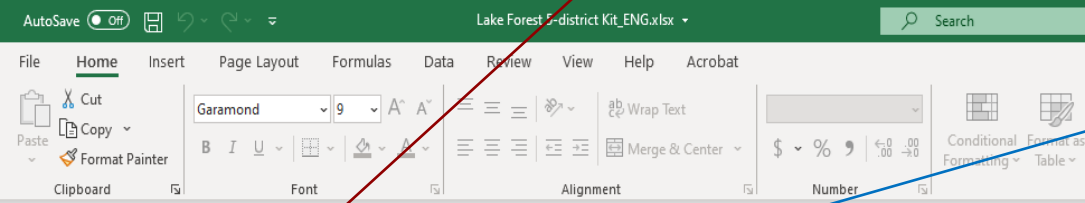
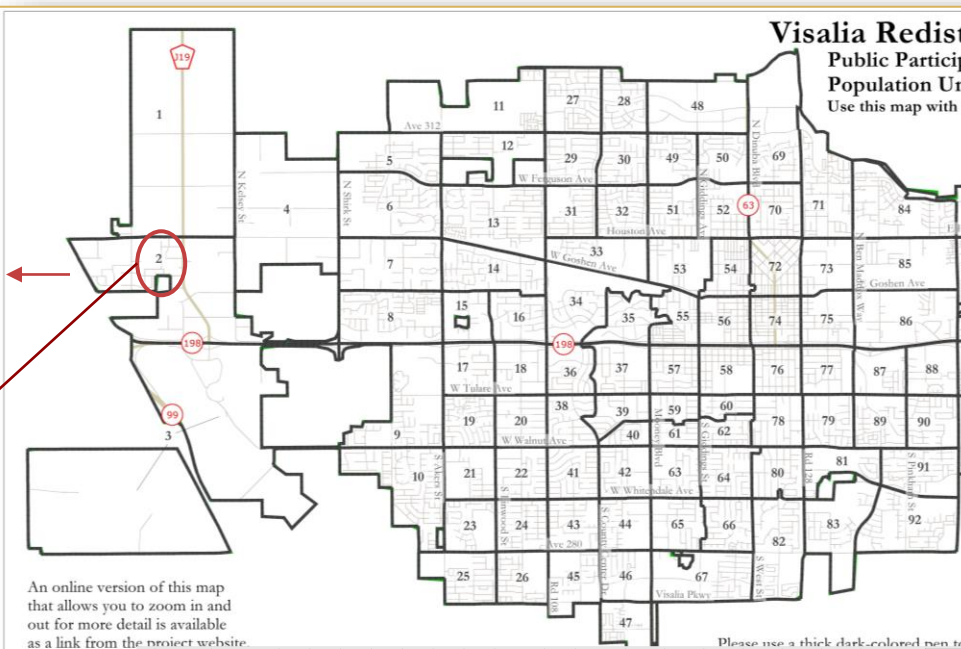
- For those without internet access or who prefer paper
- Total Population Counts only – no demographic numbers



# Simple Map Drawing Tool + Excel Supplement

## “Public Participation Kit”

- For those who know Excel and do not wish to use online tools
- Adds CVAP data
- Excel does the math



Sum by District Assigned Ideal population: 15,314

City of San Buenaventura 2017 Public Participation Kit

enter your name here

Group	Category	Counts							Percentages							Unassigned	Total	
		1	2	3	4	5	6	7	Unassigned	1	2	3	4	5	6			7
Total Population	Tot. Pop.	0	0	0	0	0	0	0	107,197	107,197	0	-100%	-100%	-100%	-100%	-100%	-100%	0.00%
	Ideal	-15,314	-15,314	-15,314	-15,314	-15,314	-15,314	-15,314	0	0	0	0	0	0	0	0	0	0.00%
	Hisp.	0	0	0	0	0	0	0	34,182	34,182	#DIV/0!	#DIV/0!	#DIV/0!	#DIV/0!	#DIV/0!	#DIV/0!	#DIV/0!	32%
	NH Wht	0	0	0	0	0	0	0	64,294	64,294	#DIV/0!	#DIV/0!	#DIV/0!	#DIV/0!	#DIV/0!	#DIV/0!	#DIV/0!	60%
Total CVAP	Total CVAP	0	0	0	0	0	0	0	83,090	83,090	#DIV/0!	#DIV/0!	#DIV/0!	#DIV/0!	#DIV/0!	#DIV/0!	#DIV/0!	4%
	Hisp.	0	0	0	0	0	0	0	22,928	22,928	#DIV/0!	#DIV/0!	#DIV/0!	#DIV/0!	#DIV/0!	#DIV/0!	#DIV/0!	28%
	NH Wht	0	0	0	0	0	0	0	53,857	53,857	#DIV/0!	#DIV/0!	#DIV/0!	#DIV/0!	#DIV/0!	#DIV/0!	#DIV/0!	59%
	NH Blk	0	0	0	0	0	0	0	3,401	3,401	#DIV/0!	#DIV/0!	#DIV/0!	#DIV/0!	#DIV/0!	#DIV/0!	#DIV/0!	2%
Total Reg.	Total Reg.	0	0	0	0	0	0	0	30,448	30,448	#DIV/0!	#DIV/0!	#DIV/0!	#DIV/0!	#DIV/0!	#DIV/0!	#DIV/0!	20%
	Hisp.	0	0	0	0	0	0	0	11,800	11,800	#DIV/0!	#DIV/0!	#DIV/0!	#DIV/0!	#DIV/0!	#DIV/0!	#DIV/0!	39%
	NH Wht	0	0	0	0	0	0	0	16,715	16,715	#DIV/0!	#DIV/0!	#DIV/0!	#DIV/0!	#DIV/0!	#DIV/0!	#DIV/0!	59%
	NH Blk	0	0	0	0	0	0	0	463	463	#DIV/0!	#DIV/0!	#DIV/0!	#DIV/0!	#DIV/0!	#DIV/0!	#DIV/0!	2%

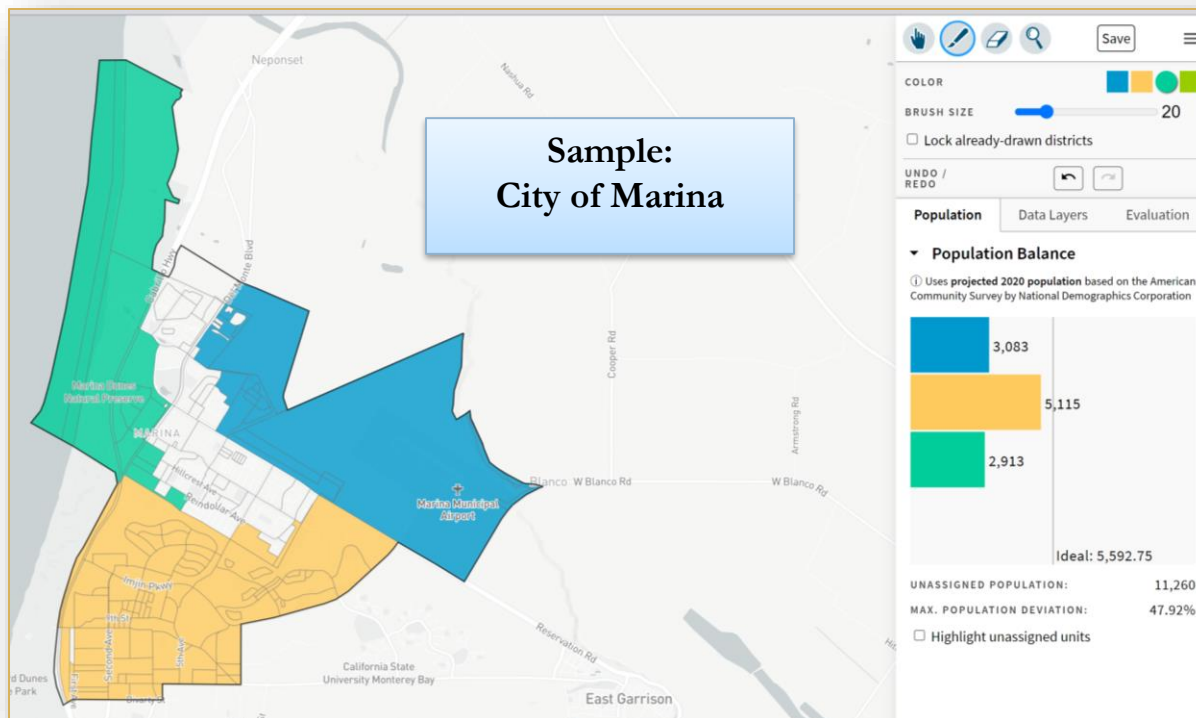
Submitter's Comments about the plan:  
 Thank this map makes sense because ...

1	2	3	4	5	6	7	8	9	10	11	12	13	14	15	16	17	18	19	20	21	22	23	24	25	26	27	28	29	30	31	32	33	34	35	36	37	38	39	40	41	42	43	44	45	46	47	48	49	50	51	52	53	54	55	56	57	58	59	60	61	62	63	64	65	66	67	68	69	70	71	72	73	74	75	76	77	78	79	80	81	82	83	84	85	86	87	88	89	90	91	92
1	2	3	4	5	6	7	8	9	10	11	12	13	14	15	16	17	18	19	20	21	22	23	24	25	26	27	28	29	30	31	32	33	34	35	36	37	38	39	40	41	42	43	44	45	46	47	48	49	50	51	52	53	54	55	56	57	58	59	60	61	62	63	64	65	66	67	68	69	70	71	72	73	74	75	76	77	78	79	80	81	82	83	84	85	86	87	88	89	90	91	92

# DistrictR

## “Draw Your Community of Interest” focus

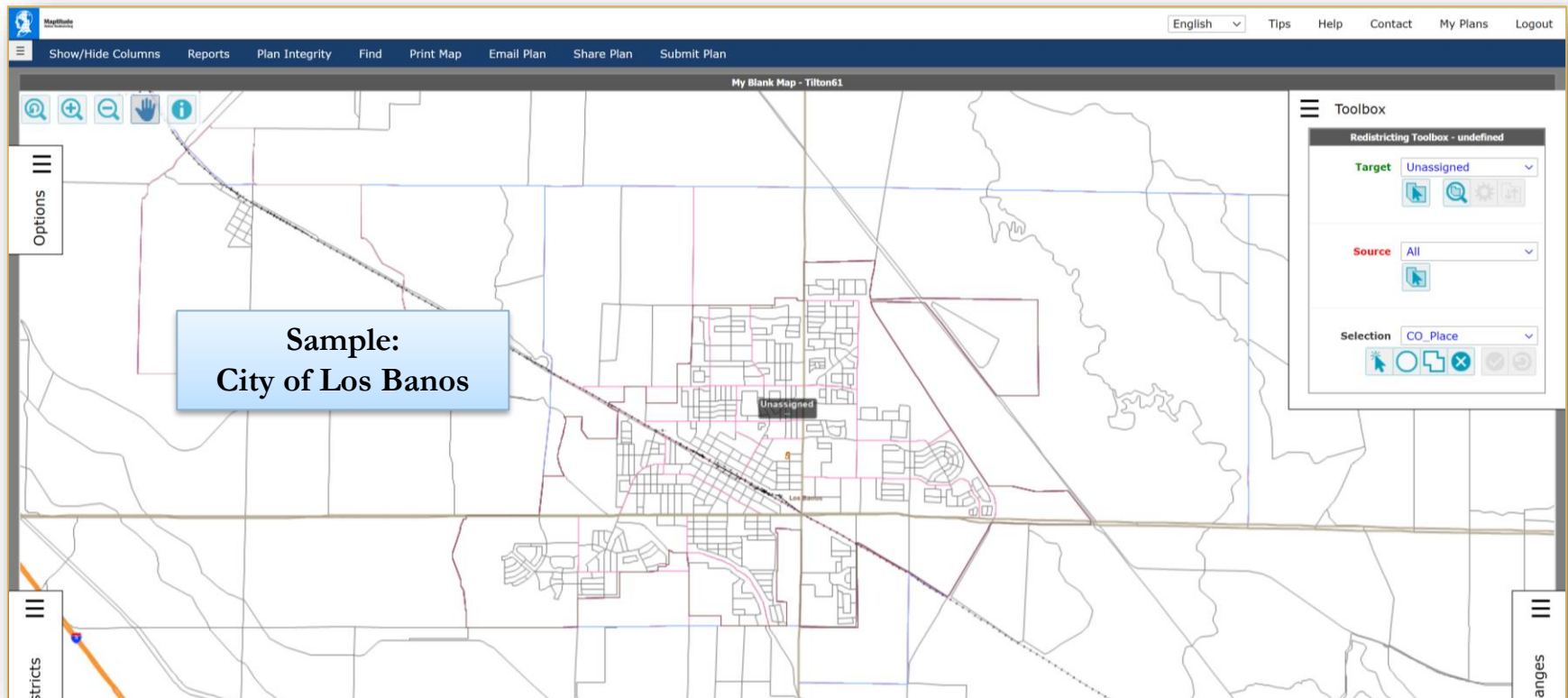
- [districtR.org](https://districtr.org)
- Also includes simple district-mapping tool; Only available in English
- Similar external options: [Representable.org](https://representable.org), [DrawMyCACommunity.org](https://drawmycacomunity.org)



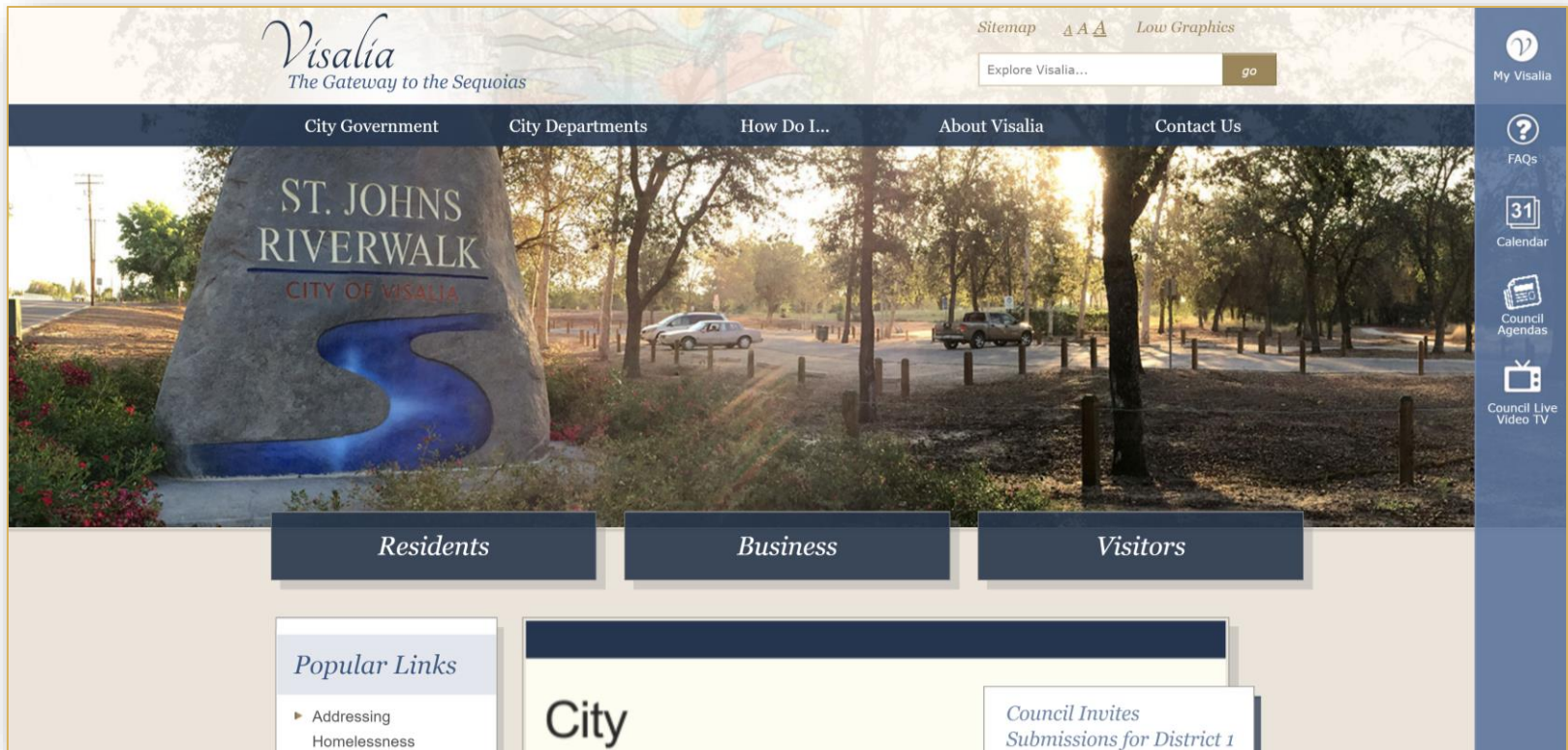
# Caliper's "Maptitude Online Redistricting"

## Full Database, Powerful Online Mapping Tool

- Powerful, common, data-rich online tool
- Six language options: English, Spanish, Portuguese, Vietnamese, Mandarin and Korean



# Share Your Thoughts



**Website:** [www.visalia.city/drawvisalia](http://www.visalia.city/drawvisalia)

**Phone:** 559.713.4535 | **Email:** [CommunityFeedback@visalia.city](mailto:CommunityFeedback@visalia.city)

# Public Hearing & Discussion

---

- ❑ What is your neighborhood and what are its boundaries?
- ❑ What other notable areas are in the City, and what are their boundaries?
- ❑ Any questions about the mapping tools?

## Council Discussion on:

- “neighborhoods”
- “communities of interest”