



Parks & Recreation

NEIGHBORHOOD PARK PRESENTATION

Elliott Park Property



AGENDA ELLIOTT PROPERTY PARK

- History
- Public Meetings
- Conceptual Designs
- Budget
- Recommendations



ELLIOTT PROPERTY PARK HISTORY

- Property was noticed every time it went to the Visalia Planning Commission & the Visalia City Council
- The Elliott Property Park (Walnut and Roeben) was recommended by the Visalia Planning Commission to move forward on 8/12/24 (5-0 Vote) & approved by the Visalia City Council on 9-16-24. (5-0 Vote)

ELLIOTT PROPERTY PARK HISTORY

- San Joaquin Valley Homes selected Wood Architecture to design the Elliott Property Park.
- The Elliott Property is 4 acres.
- Wood Architecture engaged with City Staff to get public input on park amenities from the community to create three conceptual designs for each park location.
- The three public input meetings were held for the Elliott Property, and they took place during the spring of 2025.

ELLIOTT PROPERT PUBLIC MEETINGS

The public voted on different types of amenities ranging from Traditional Sports, Community Amenities, Active Amenities, and Site Amenities

Traditional Sports Amenities:

Multi-Purpose Lighted Athletic Field (Soccer, Baseball, Flag Football and Softball), Lighted Pickleball Courts, Lighted Tennis Courts and Lighted Basketball Courts

Community Amenities:

Amphitheater, Demonstration Garden, Botanical Garden, Butterfly Garden, Interpretive Signage and Public Art

Active Amenities:

Traditional Playground (2-5, 5-12) w/ Shade Sail Structures, Adventure/Nature Playground w/ Shade Sail Structures, Obstacle Course, Parcourse Equipment, Disc Golf, BMX Pump Track, Cornhole, Lighted Walking Path, Mini Pitch Court and Outdoor Handball Court

Site Amenities:

Solar Pedestrian Lights, Restrooms, Seating Areas, Parking Lot and Drinking Fountains





Neighborhood Park #1 (Elliot Property)

Traditional Sports Amenities

Images are for visual example only.

Place provided stickers on the amenities you would like to see in this park.

- Blue dots indicate top preferred amenities (primary choices).
- Red dots indicate next preferred amenities (secondary choices).

Vote for 6 different amenities, do not place multiply dots on the same amenity.

Park location includes approximately 1.5 acres of open space to utilize as Multi-Purpose with potential for athletic field lighting.



March 11, 2025

ELLIOTT PROPERTY PARK PUBLIC MEETINGS

Parks & Recreation



ELLIOTT PROPERTY PARK Parks & Recreation

PUBLIC MEETINGS

The top six park amenities chosen for the Elliott Property are as follows:

Elliott Property

Amenity	Votes
Walking Path w/ Lights	72
Restrooms	65
Pickleball Courts	56
BMX Pump Track	42
Parking Lot	36
Botanical Garden	28

ELLIOTT PROPERTY PARK PUBLIC MEETINGS

The top ten amenities when you combine the Elliott Property and the Pearl Wood Property together:

Amenity Votes	Votes
Walking Path w/ Lights	121
Restrooms	101
Pickleball Courts	98
Pump Track	87
Parking Lot	57
Botanical Garden	47
Athletic Field Space	47
Amphitheater	37
Traditional Playground	45
Adventure Playground	43
Basketball Courts	16
Mini Pitch (Pearl Wood Only)	8

ELLIOTT PROPERTY PARK CONCEPTUAL DESIGNS

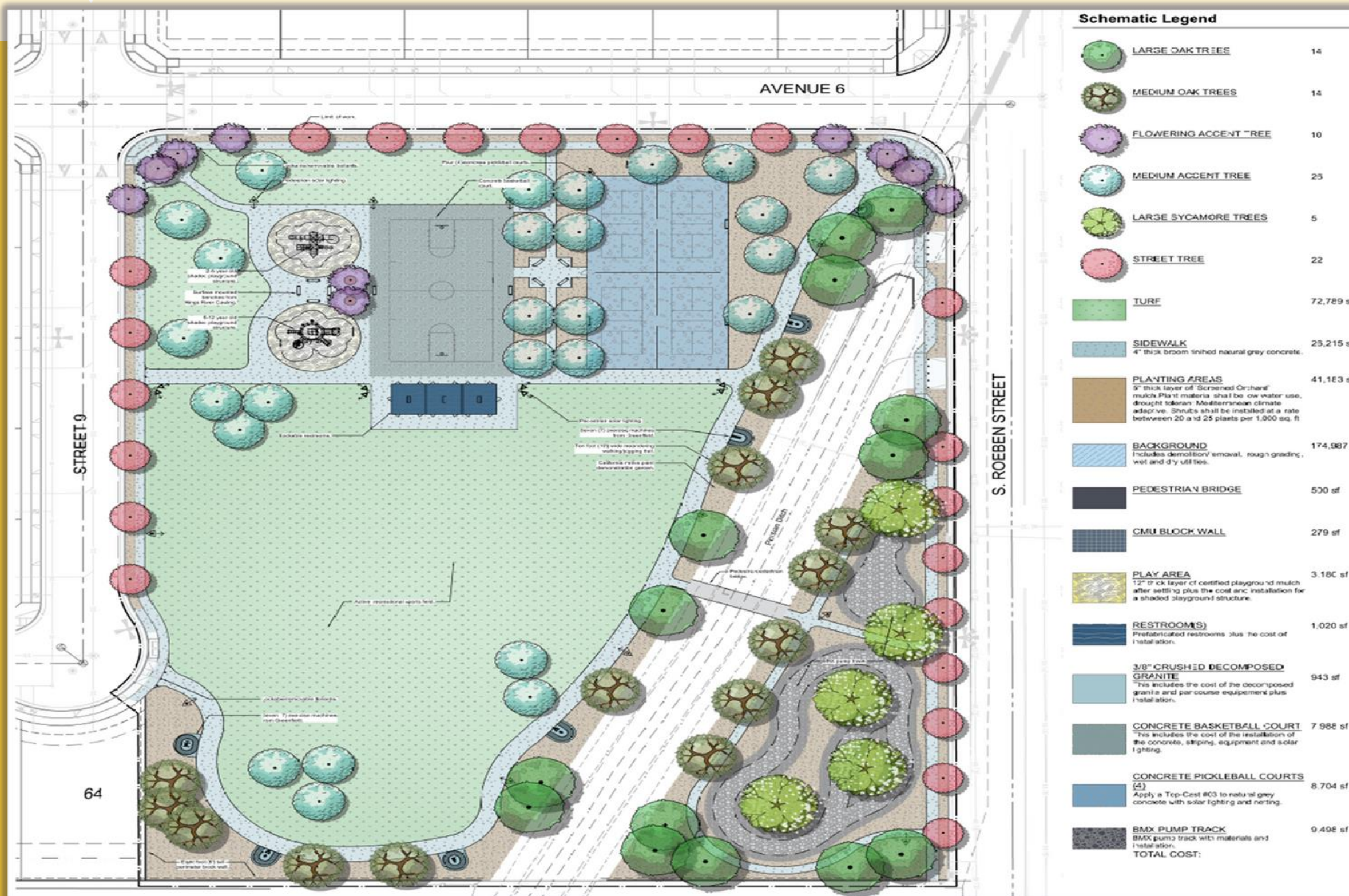
The design teams used the feedback gathered during the three community input meetings to create three conceptual designs for the Elliott Property Park. In addition to the valuable input provided by the public, the design teams, working in collaboration with City staff, carefully considered several other key factors. These included park size, fit, available space, compatibility of amenities with the surrounding neighborhood and the City, overall functionality, initial construction costs relative to the available budget, and the long-term cost and complexity of ongoing maintenance.

CONCEPTUAL DESIGN #1



Amenity Features
Basketball Court
Restrooms
Pickleball Courts
Lit Walking Path
Passive Play Area
Traditional Playground
Kodak Moment

CONCEPTUAL DESIGN #2



Amenity Features

- Pump Track
- Basketball Court
- Pickleball Courts
- Lit Walking Path
- Passive Play Area
- Traditional Playground
- Restrooms
- Kodak Moment

CONCEPTUAL DESIGN #3



Amenity Features
Pump Track
Mini Pitch
Passive Play Area
Lit Walking Path
Cornhole/ Horseshoe Pits
Fitness Course
Traditional Playground
Kodak Moment



On September 9, 2025, the Visalia Parks and Recreation Commission recommended to the Visalia City Council conceptual design number 3 for the Elliott Park Property.

ESTIMATED BUDGET

Elliott Property Park Cost Estimate

\$4,780,800.00

Elliott Property Park Current Budget

\$5,197,370.00

- Staff recommends that the Visalia City Council approve conceptual design number (3) for the Elliott Property.

Thank you!
Questions?

