

Exhibit 1. Driveways in this Goshen subdivision limit on-street parking space to about one spaces for every five dwellings. Some of these homes are built with single-car driveways with two-car tandem garages.



Exhibit 2. This picture depicts the street above from ground level. This block is absent of street trees. While the street is wide enough to accommodate on-street parking, the driveway density limits the space, that makes the roadway feel oversized.



Exhibit 3. The front elevation of this model home in Goshen has no ground floor windows and the front door faces the side yard fence, resulting in an absence of “eyes on the street”. The garage dominates the front of this house to the degree that one would not unreasonable to assume this is the back of a house facing an alley.



Exhibit 4. These homes, while narrow and attractive, forego the adequate parkway space to afford a street tree. This neighborhood is located in San Luis Obispo, a city that experiences more cool days than Visalia.

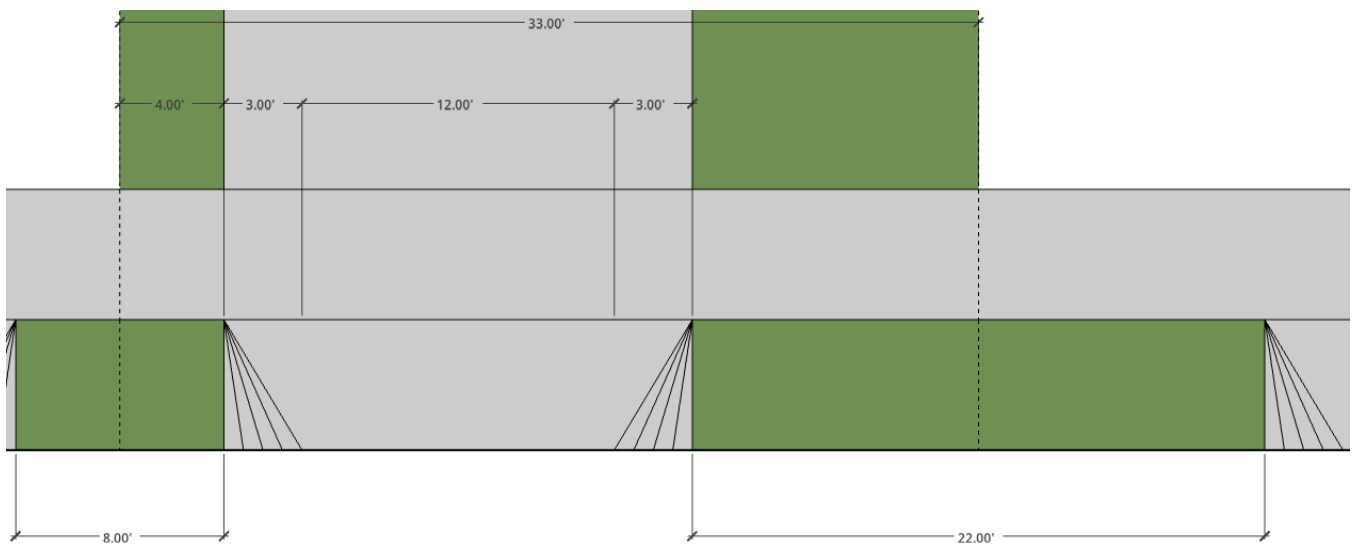


Exhibit 5. The above diagram depicts the amount of parkway space available along a narrow lot's frontage, in relation to on-site driveways and adjacent drive approaches.



Exhibit 6. This narrow lot subdivision in Anatolia Village in Rancho Cordova has street-, paseo-, and park-facing homes whose garages face an alley or shared driveway. While these streets lack parkways, a sidewalk with parkway here would presumably possess a very dense and connected tree canopy.

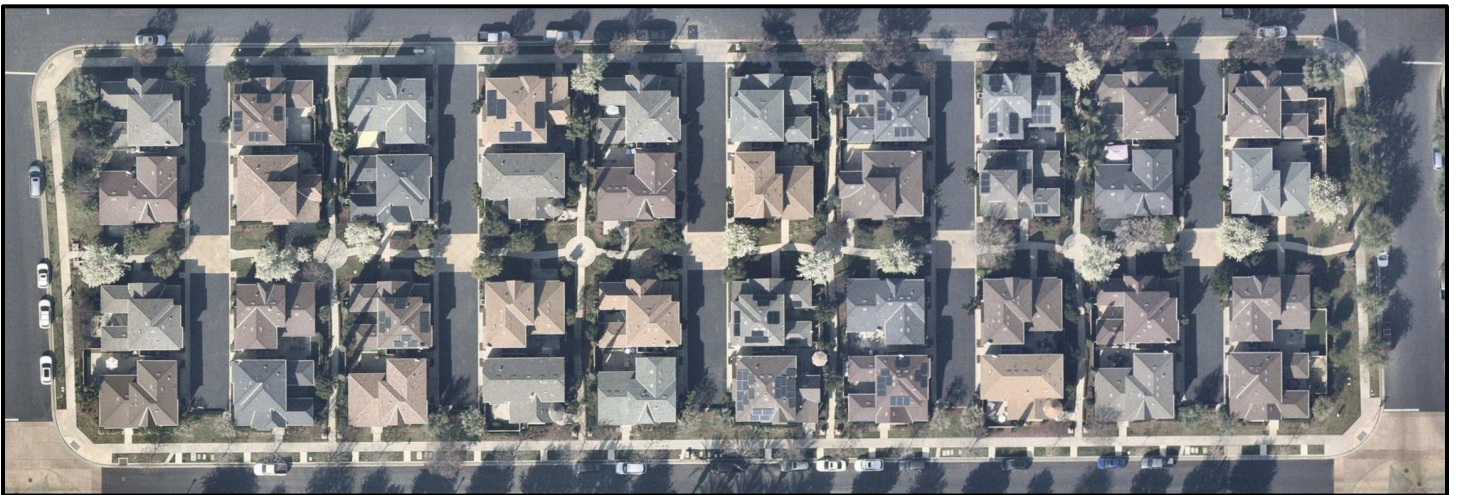


Exhibit 7. Located in Harlan Ranch in Clovis, this subdivision has narrow homes fronting onto a street or paseo with alley-loaded garages. This subdivision, built over 16 years ago, now possesses a dense tree canopy.



Exhibit 8. Providing alley-loaded garages with a standard rectangular building can leave little space for private open space. This subdivision, located in Righetti Ranch in San Luis Obispo, provides private open space by wrapping the open space with its building.

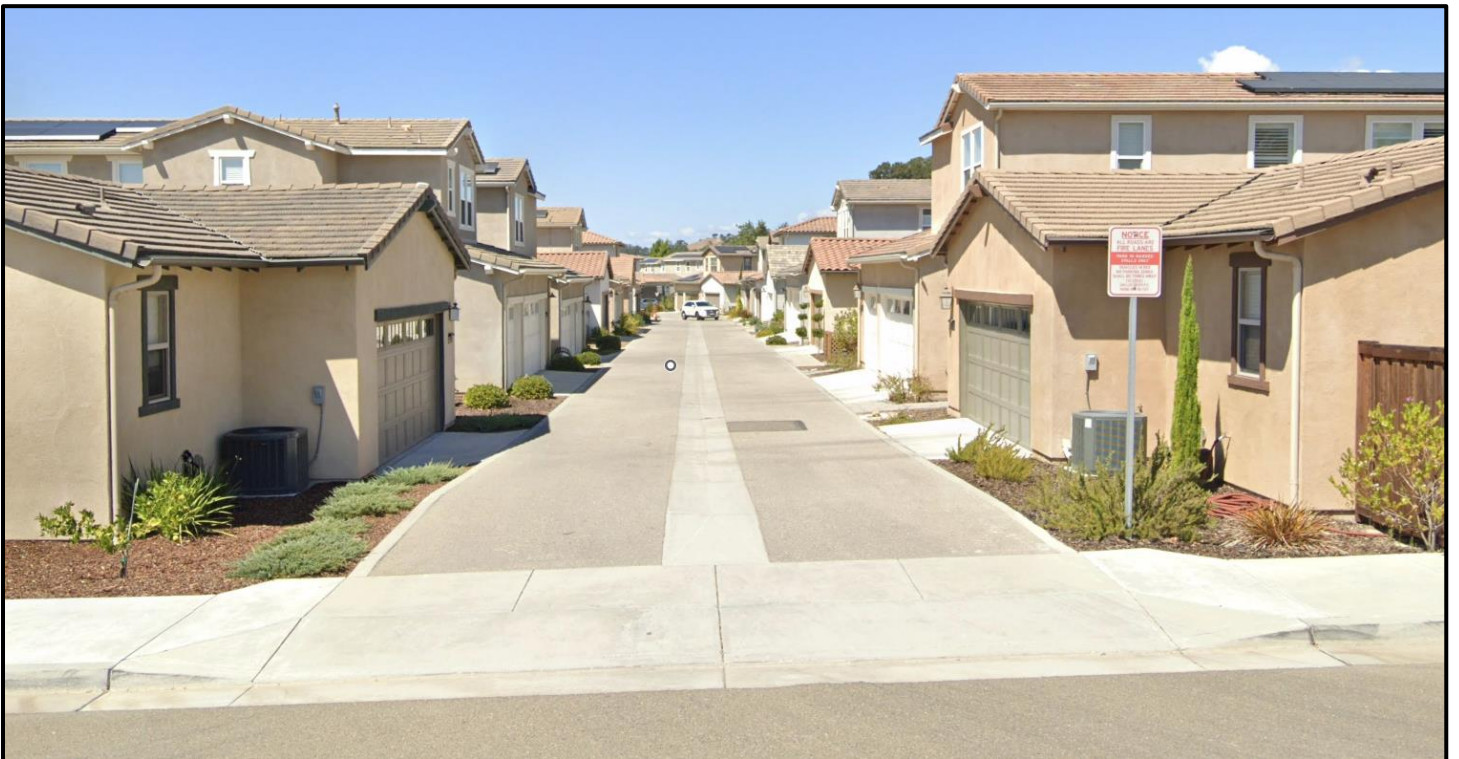


Exhibit 9. These homes all have alley-loaded garages, and the front of these homes face a public street. These homes are located in Righetti Ranch in San Luis Obispo.



Exhibit 10. A view of the front of the alley-loaded homes shown above. A lack of driveways along the front of the house allows for increased street tree density.



Exhibit 11. These homes front the street or a shared walkway, and they all share a common alley. These are also located in Righetti Ranch in San Luis Obispo.