

RESOLUTION NO. 2026-32

A RESOLUTION OF THE VISALIA CITY COUNCIL
A RESOLUTION OF INTENTION TO ANNEX
INTO OPEN SPACE DISTRICT NO. 25-01
RIVER RUN RANCH 6-10

BE IT RESOLVED by the City Council of the City of Visalia, California, that:

1. In its opinion, the public interest and convenience require, and it is the intention of said Council to order the annexation into an existing maintenance district in a portion of said City, pursuant to Title 12, Chapter 12.40 of the Ordinance Code of the City of Visalia, to keep it's designation "Open Space District No. 25-01", by which name it is and shall continue to be referred to and in all subsequent proceedings, including the proceedings for the levy and collection of charges. The formation of Open Space District No. 25-01 included the entire area of the River Run Ranch 6-10 tentative map, but only 92 of the 160 units were intended to be levied with the formation. This annexation intends to incorporate the remaining 68 units, such that all units of the River Run Ranch 6-10 tentative map are levied for the 2026-2027 fiscal year.
2. Said maintenance district, and the boundaries thereof, benefited and to be assessed for the maintenance and operation of improvements hereinafter referred to, are situated in the Northeast Specific Plan Area, City of Visalia, County of Tulare, State of California, and are particularly described on the attached map Exhibit A, and by this reference incorporated herein.
3. It is ordered that the expense of maintaining and operating parks and parkways, and appurtenance thereto, including, but not limited to, walkways, crosswalks, steps, safety zones, parking areas, platforms, seats, statuary, fountains, certain fencing, drainage facilities; poles, posts, wire, lights, conduits, tunnels, ramps and other suitable or necessary appliances for the purposed of lighting said places or public ways; water mains or sprinkler systems; and ornamental planning including lawns, shrubs and trees, all as now exist or may hereafter be constructed in or for said Maintenance District, and a benefit to said Maintenance District but not to benefit the City of Visalia as a whole, including the cost of necessary repairs, replacements, fuel, power, electric current, care, supervision and any and all other items necessary for the proper maintenance and operation thereof, shall be charged to the owners of residential units within said Maintenance District above described. Council has hereby determined that said district will benefit by the maintenance and operation of said improvements and that the amount of \$44.28 per year will be charged and shall be collected either by billing by the City of Visalia or collected with property taxes by the County of Tulare.

PASSED AND ADOPTED: June 15th, 2026

LESLIE B. CAVIGLIA, CITY CLERK

STATE OF CALIFORNIA)
COUNTY OF TULARE) ss.
CITY OF VISALIA)

I, Leslie B. Caviglia, City Clerk of the City of Visalia, certify the foregoing is the full and true Resolution 2026-32 passed and adopted by the Council of the City of Visalia at a regular meeting held on June 15th, 2026.

Dated: June 15th, 2026

LESLIE B. CAVIGLIA, CITY CLERK

By Reyna Rivera, Chief Deputy City Clerk

RESOLUTION NO. 2026-33

RESOLUTION ORDERING THE ANNEXATION INTO
OPEN SPACE DISTRICT NO. 25-01
RIVER RUN RANCH 6-10

WHEREAS, pursuant to Title 12, Chapter 12.40 of the Ordinance Code of the City of Visalia, California, the City Council of said City did adopt resolution of intention to annex into Open Space District No. 25-01 in said CITY; and

WHEREAS, owners of all land within the boundaries of the proposed Open Space District No. 25-01 have filed their consent to the annexation into the existing district; and

WHEREAS, the formation of Open Space District No. 25-01 included the entire area of the River Run Ranch 6-10 tentative map, but only 92 of the 160 units were intended to be levied with the formation. This annexation intends to incorporate the remaining 68 units, such that all units of the River Run Ranch 6-10 tentative map are levied for the 2026-2027 fiscal year.

WHEREAS, said Council did declare by adopting said resolution its intention to order, at the expense of maintaining and operating parks, parkways and appurtenance thereto, including, but not limited to; walkways, crosswalks, steps, safety zones, parking areas, platforms, seats, statuary, fountains, certain fencing, drainage facilities; poles, posts, wire, lights, conduits, tunnels, ramps and other suitable or necessary appliances for the purposes of lighting said places or public ways; water mains or sprinkler systems; and ornamental planting including lawns, shrubs and trees, all as now exist or may hereafter be constructed in or for said Maintenance District, and a benefit to said Maintenance District but not to benefit the City of Visalia as a whole, including the cost of necessary repairs, replacements, fuel, power, electric current, care, supervision and any and all other items necessary for the proper maintenance and operation thereof, shall be charged to the owners of residential units within said Maintenance District above described, which district said Council hereby determined will be a district benefited by the maintenance and operation of said improvements and that the amounts so charged are to be collected through billing by the City or with property taxes collected by the County of Tulare.

NOW, THEREFORE HEREBY BE IT RESOLVED and ordered as follows:

1. That the public interest and convenience require and that the additional units of the River Run Ranch 6-10 Estates tentative map are annexed into the existing maintenance district for the maintenance and operation of parks and parkways and appurtenances thereto, including, but not limited to walkways, crosswalks, steps, safety zones, parking areas, platforms, seats, statuary, fountains, certain fencing, drainage facilities; poles, posts, wire, lights, conduits, tunnels, ramps and other suitable or necessary appliances for the purpose of lighting said places or public ways; water mains or sprinkler systems; and ornamental planting including shrubs and trees, all as now exist or may hereafter be constructed in or for said Maintenance District, and a benefit to said Maintenance District but not to benefit the City of

Visalia as a whole, which district said Council hereby determines will be the district benefited by the maintenance operation of said improvements.

2. That said district is, and shall continue to be designated as "Open Space District No. 25-01", by which name it shall hereafter referred to in all subsequent proceedings, including proceedings for the collection of charges in the amount of \$44.28 per year; that such charges be collected either by billing by the City of Visalia or collected with property taxes by the County of Tulare.

3. That the district and the boundaries thereof benefited and to be assessed for the maintenance and operation of the improvements described are situated in Tulare County, State of California, City of Visalia and are particularly described on the attached map Exhibit A, and by this reference incorporated herein.

PASSED AND ADOPTED: June 15th, 2026

LESLIE B. CAVIGLIA, CITY CLERK

STATE OF CALIFORNIA)
COUNTY OF TULARE) ss.
CITY OF VISALIA)

I, Leslie B. Caviglia, City Clerk of the City of Visalia, certify the foregoing is the full and true Resolution 2026-33 passed and adopted by the Council of the City of Visalia at a regular meeting held on June 15th, 2026

Dated: June 15th, 2026

LESLIE B. CAVIGLIA, CITY CLERK

By Reyna Rivera, Chief Deputy City Clerk

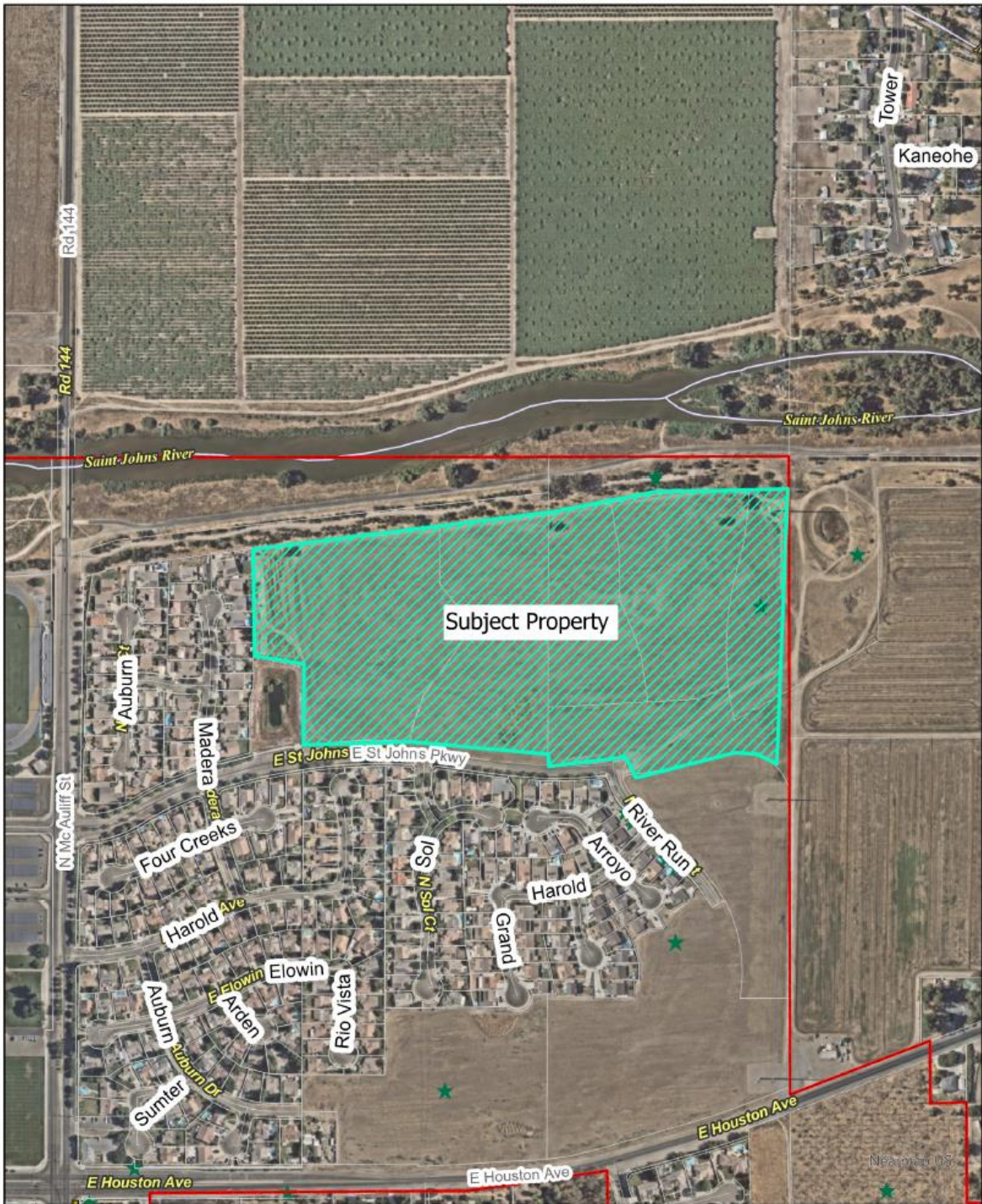
Exhibit "A"
Open Space District No. 25-01
River Run Ranch 6-10
Fiscal Year 2026-27

<u>APN #</u>	<u>Assessment</u>	<u>Lot #</u>	<u>District</u>	<u>Open Space</u>
To Be Assigned	\$44.28	93	RIVER RUN RANCH 6-10	No. 25-01
To Be Assigned	\$44.28	94	RIVER RUN RANCH 6-10	No. 25-01
To Be Assigned	\$44.28	95	RIVER RUN RANCH 6-10	No. 25-01
To Be Assigned	\$44.28	96	RIVER RUN RANCH 6-10	No. 25-01
To Be Assigned	\$44.28	97	RIVER RUN RANCH 6-10	No. 25-01
To Be Assigned	\$44.28	98	RIVER RUN RANCH 6-10	No. 25-01
To Be Assigned	\$44.28	99	RIVER RUN RANCH 6-10	No. 25-01
To Be Assigned	\$44.28	100	RIVER RUN RANCH 6-10	No. 25-01
To Be Assigned	\$44.28	101	RIVER RUN RANCH 6-10	No. 25-01
To Be Assigned	\$44.28	102	RIVER RUN RANCH 6-10	No. 25-01
To Be Assigned	\$44.28	103	RIVER RUN RANCH 6-10	No. 25-01
To Be Assigned	\$44.28	104	RIVER RUN RANCH 6-10	No. 25-01
To Be Assigned	\$44.28	105	RIVER RUN RANCH 6-10	No. 25-01
To Be Assigned	\$44.28	106	RIVER RUN RANCH 6-10	No. 25-01
To Be Assigned	\$44.28	107	RIVER RUN RANCH 6-10	No. 25-01
To Be Assigned	\$44.28	108	RIVER RUN RANCH 6-10	No. 25-01
To Be Assigned	\$44.28	109	RIVER RUN RANCH 6-10	No. 25-01
To Be Assigned	\$44.28	110	RIVER RUN RANCH 6-10	No. 25-01
To Be Assigned	\$44.28	111	RIVER RUN RANCH 6-10	No. 25-01
To Be Assigned	\$44.28	112	RIVER RUN RANCH 6-10	No. 25-01
To Be Assigned	\$44.28	113	RIVER RUN RANCH 6-10	No. 25-01
To Be Assigned	\$44.28	114	RIVER RUN RANCH 6-10	No. 25-01
To Be Assigned	\$44.28	115	RIVER RUN RANCH 6-10	No. 25-01
To Be Assigned	\$44.28	116	RIVER RUN RANCH 6-10	No. 25-01
To Be Assigned	\$44.28	117	RIVER RUN RANCH 6-10	No. 25-01
To Be Assigned	\$44.28	118	RIVER RUN RANCH 6-10	No. 25-01
To Be Assigned	\$44.28	119	RIVER RUN RANCH 6-10	No. 25-01
To Be Assigned	\$44.28	120	RIVER RUN RANCH 6-10	No. 25-01
To Be Assigned	\$44.28	121	RIVER RUN RANCH 6-10	No. 25-01
To Be Assigned	\$44.28	122	RIVER RUN RANCH 6-10	No. 25-01
To Be Assigned	\$44.28	123	RIVER RUN RANCH 6-10	No. 25-01
To Be Assigned	\$44.28	124	RIVER RUN RANCH 6-10	No. 25-01
To Be Assigned	\$44.28	125	RIVER RUN RANCH 6-10	No. 25-01
To Be Assigned	\$44.28	126	RIVER RUN RANCH 6-10	No. 25-01
To Be Assigned	\$44.28	127	RIVER RUN RANCH 6-10	No. 25-01
To Be Assigned	\$44.28	128	RIVER RUN RANCH 6-10	No. 25-01
To Be Assigned	\$44.28	129	RIVER RUN RANCH 6-10	No. 25-01
To Be Assigned	\$44.28	130	RIVER RUN RANCH 6-10	No. 25-01
To Be Assigned	\$44.28	131	RIVER RUN RANCH 6-10	No. 25-01

Exhibit "A"
 Open Space District No. 25-01
 River Run Ranch 6-10
 Fiscal Year 2026-27

To Be Assigned	\$44.28	132	RIVER RUN RANCH 6-10	No. 25-01
To Be Assigned	\$44.28	133	RIVER RUN RANCH 6-10	No. 25-01
To Be Assigned	\$44.28	134	RIVER RUN RANCH 6-10	No. 25-01
To Be Assigned	\$44.28	135	RIVER RUN RANCH 6-10	No. 25-01
To Be Assigned	\$44.28	136	RIVER RUN RANCH 6-10	No. 25-01
To Be Assigned	\$44.28	137	RIVER RUN RANCH 6-10	No. 25-01
To Be Assigned	\$44.28	138	RIVER RUN RANCH 6-10	No. 25-01
To Be Assigned	\$44.28	139	RIVER RUN RANCH 6-10	No. 25-01
To Be Assigned	\$44.28	140	RIVER RUN RANCH 6-10	No. 25-01
To Be Assigned	\$44.28	141	RIVER RUN RANCH 6-10	No. 25-01
To Be Assigned	\$44.28	142	RIVER RUN RANCH 6-10	No. 25-01
To Be Assigned	\$44.28	143	RIVER RUN RANCH 6-10	No. 25-01
To Be Assigned	\$44.28	144	RIVER RUN RANCH 6-10	No. 25-01
To Be Assigned	\$44.28	145	RIVER RUN RANCH 6-10	No. 25-01
To Be Assigned	\$44.28	146	RIVER RUN RANCH 6-10	No. 25-01
To Be Assigned	\$44.28	147	RIVER RUN RANCH 6-10	No. 25-01
To Be Assigned	\$44.28	148	RIVER RUN RANCH 6-10	No. 25-01
To Be Assigned	\$44.28	149	RIVER RUN RANCH 6-10	No. 25-01
To Be Assigned	\$44.28	150	RIVER RUN RANCH 6-10	No. 25-01
To Be Assigned	\$44.28	151	RIVER RUN RANCH 6-10	No. 25-01
To Be Assigned	\$44.28	152	RIVER RUN RANCH 6-10	No. 25-01
To Be Assigned	\$44.28	153	RIVER RUN RANCH 6-10	No. 25-01
To Be Assigned	\$44.28	154	RIVER RUN RANCH 6-10	No. 25-01
To Be Assigned	\$44.28	155	RIVER RUN RANCH 6-10	No. 25-01
To Be Assigned	\$44.28	156	RIVER RUN RANCH 6-10	No. 25-01
To Be Assigned	\$44.28	157	RIVER RUN RANCH 6-10	No. 25-01
To Be Assigned	\$44.28	158	RIVER RUN RANCH 6-10	No. 25-01
To Be Assigned	\$44.28	159	RIVER RUN RANCH 6-10	No. 25-01
To Be Assigned	\$44.28	160	RIVER RUN RANCH 6-10	No. 25-01

Exhibit "A"
Open Space District No. 25-01
River Run Ranch 6-10
Fiscal Year 2026-27



Legend

- City Limits
- Parcels

**OPEN SPACE DISTRICT
BOUNDARY MAP**

RIVER RUN RANCH 6-10

0 140 280 560 840 1,120
Feet

N