

**SITE PLAN LEGEND:**

- NEW BUILDING
- EX. BUILDING
- SAFE DISPERSAL AREA
- ACCESSIBLE RESTROOM, SEE FLOOR PLANS FOR GENDER
- PROPERTY LINE
- ACCESSIBLE PATH OF TRAVEL
- NEW CONCRETE PAVING
- NEW ASPHALT PAVING
- CONTROL POINT, SEE TABLE ON SD2

**SITE PLAN KEYNOTES:**

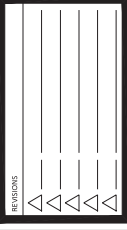
- 1 ACCESSIBLE PATH OF TRAVEL:**  
 PATH OF TRAVEL (P.O.T.) AS VERIFIED BY THE ARCHITECT IS A COMMON BARRIER-FREE ACCESSIBLE ROUTE AT LEAST 60" WIDE WITHOUT ANY ABRUPT VERTICAL CHANGES EXCEEDING 1/2" REVEALED AT 1/2" MAXIMUM SLOPE, EXCEPT THAT LEVEL CHANGES DO NOT EXCEED 1/4" VERTICAL. THE PATH SURFACE IS TO BE PEDESTAL, STABLE, FIRM, AND SMOOTH.  
 PASSING SPACES AT LEAST 60" x 60" ARE LOCATED NOT MORE THAN 200' APART (1318-403.3.3).  
 CONTINUOUS GRADIENTS HAVE 80" LEVEL AREAS NOT MORE THAN 800' APART (1318-402.3).  
 CROSS-SLOPE DOES NOT EXCEED 2%.  
 SLOPE IN THE DIRECTION OF TRAVEL IS 5% OR LESS UNLESS OTHERWISE INDICATED AS A RAAMP.  
 MAINTAIN P.O.T. FREE OF OVERHANGING OBSTRUCTIONS TO 80" MINIMUM, PROTRUDING OBJECTS GREATER THAN 4" PROTRUSION FROM VERTICAL EDGES AND 27" ABOVE FINISH GRADE (1318-307.3).  
 GRATING LOCATED IN THE SURFACE OF ANY PEDESTRIAN WAY IN THE P.O.T. SHALL HAVE GRID/OPENINGS IN GRATING LIMITED TO 3/2" MAXIMUM CLEAR IN THE DIRECTION OF TRAVEL FLOW.
- 2 GATE ACCESS NOTE:**  
 ALL C.L. AND DECORATIVE METAL 4'-0" WIDE GATES IN THE PATH OF TRAVEL SHALL HAVE LEVER-TYPE LATCH AND 30" HIGH HOPLATES SECURE TO C.L. WITH BOTH SIDES. 5.85 MAX FORCE TO PUSH OR PULL OPEN (1318-404.2.9) AND BELLS MAN TO ACTIVATE OPERABLE PARTS (1318-504.9) AND STINGE SIDE (MANEUVERING CLEARANCE FOR: CBC 1318-404.2.1).
- 3 ACCESSIBLE PARKING:**  
 NEW ACCESSIBLE PARKING, SEE SHEET SD8  
 PARKING LOT 1: 388 EXISTING PARKING STALLS PER DSA# 02-113439  
 8 ACCESSIBLE PARKING STALLS REQUIRED; 7 ACCESSIBLE PARKING STALLS AND 2 ACCESSIBLE VAN STALLS PROVIDED, 9 = 8 THEREFORE OK.  
 PARKING LOT 2: 122 PARKING STALLS FOR THIS APPLICATION  
 9 ACCESSIBLE PARKING STALLS REQUIRED; 7 ACCESSIBLE PARKING STALLS AND 2 ACCESSIBLE VAN STALLS PROVIDED, 9 = 8 THEREFORE OK.  
 PARKING LOT 3: 200 PARKING STALLS FOR THIS APPLICATION  
 7 ACCESSIBLE PARKING STALLS REQUIRED; 3 ACCESSIBLE PARKING STALLS AND 4 ACCESSIBLE VAN STALLS PROVIDED, 7 = 7 THEREFORE OK.  
 PARKING LOT 4: 16 PARKING STALLS FOR THIS APPLICATION  
 1 ACCESSIBLE PARKING STALLS REQUIRED; 1 ACCESSIBLE PARKING STALLS PROVIDED, 1 = 1 THEREFORE OK.  
 PARKING LOT 5: 50 PARKING STALLS FOR THIS APPLICATION  
 2 ACCESSIBLE PARKING STALLS REQUIRED; 2 ACCESSIBLE PARKING STALLS AND 2 ACCESSIBLE VAN STALLS PROVIDED, 4 = 2 THEREFORE OK.
- 4 PASSENGER LOADING ZONES:**  
 DROP-OFF ZONES SHALL PROVIDE AN ACCESS WIDE AT LEAST 60" WIDE AND 30' LONG ADJACENT AND PARALLEL TO THE VEHICLE PULL UP SPACE. DROP ZONES SHALL BE LOCATED ON A SURFACE WITH A SLOPE NOT OVER 2%.

EV PARKING					
LOT #	# OF STALLS	EV CAPABLE REQ'D	# OF EV CAPABLE	EV CHARGERS REQ'D	# OF EV CHARGERS
2 + 3 + 4 (PUBLIC PARKING)	338	66	66	18	18
5 (FEET PARKING)	50	10	48	5	48

REFER TO ENLARGED SITE PLANS, SHEETS SD4-SD7 FOR LOCATION OF EV CAPABLE STALLS AND EV CHARGERS.

DATE: JANUARY 24, 2025

**NEW ADMINISTRATION FACILITY EXPANSION**  
 TULARE COUNTY OFFICE OF EDUCATION  
 VISALIA, TULARE COUNTY, CA



**MANGINI ARCHITECTURE**  
 ARCHITECTURE INTERIORS  
 MANGINI ASSOCIATES, INC.  
 4322 North Mission Street, Visalia, California 93291  
 VISALIA, CA 93291  
 (559) 627-2330 (254)  
 (559) 627-2324 (fax)

**OVERALL SITE PLAN**

SCALE: 3" = 100'-0"



TITLE  
 OVERALL SITE PLAN  
**SD1**  
 PROJECT 23098

DATE: 01/24/2025

**NEW ADMINISTRATION  
 FACILITY EXPANSION**  
 TULARE COUNTY OFFICE OF EDUCATION  
 VISALIA, TULARE COUNTY, CA

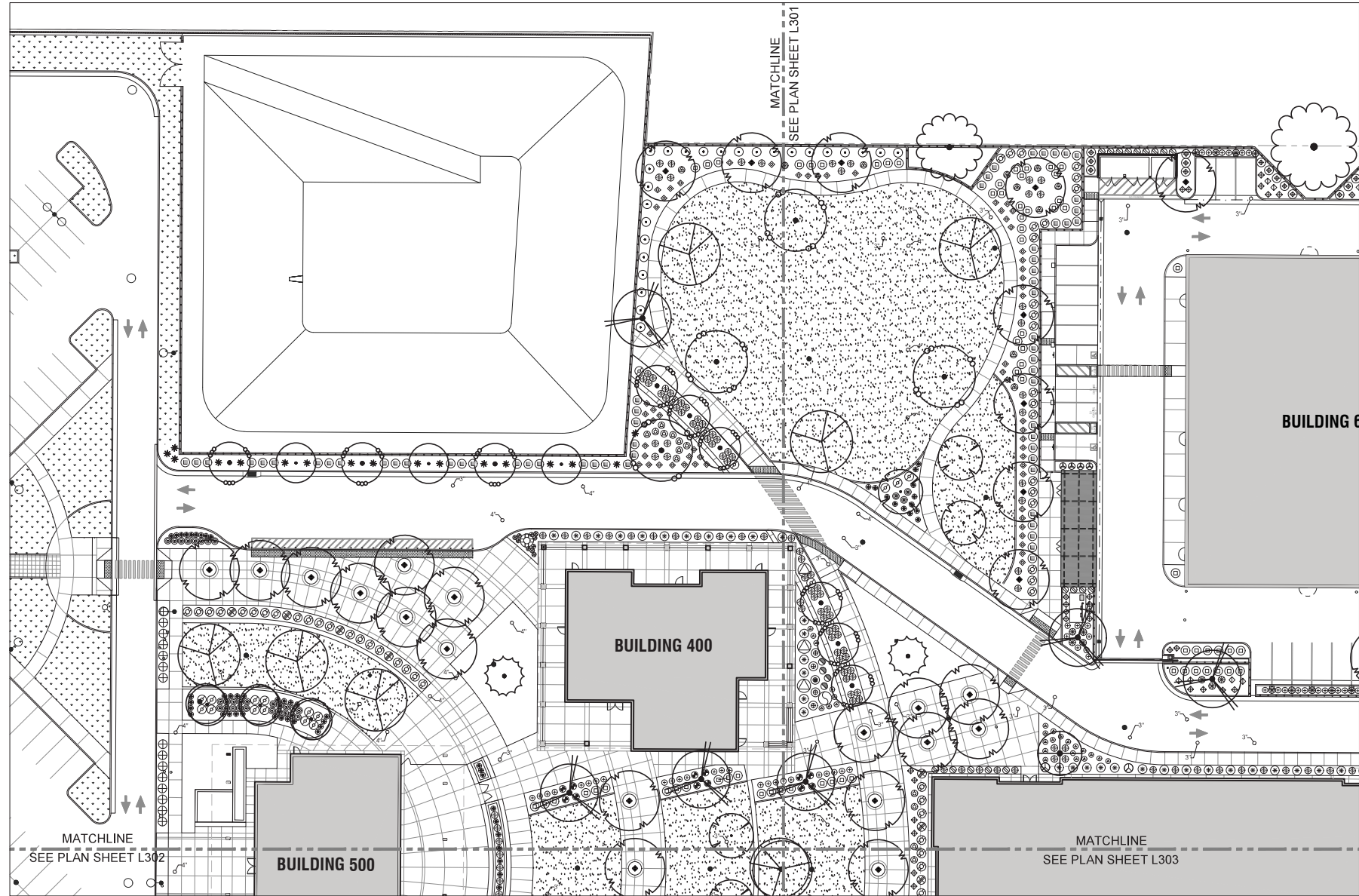
REVISIONS

ARCHITECTURE  
 INTERIORITY  
 MANGINI ASSOCIATES, INC.  
 15561 62nd Street, Suite 100  
 Visalia, California 93271

TITLE  
 LANDSCAPE  
 PLANTING  
 PLAN

**L300**

PROJECT **23098**

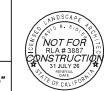


SEE LANDSCAPE PLANTING LEGEND ON PLAN SHEET L307

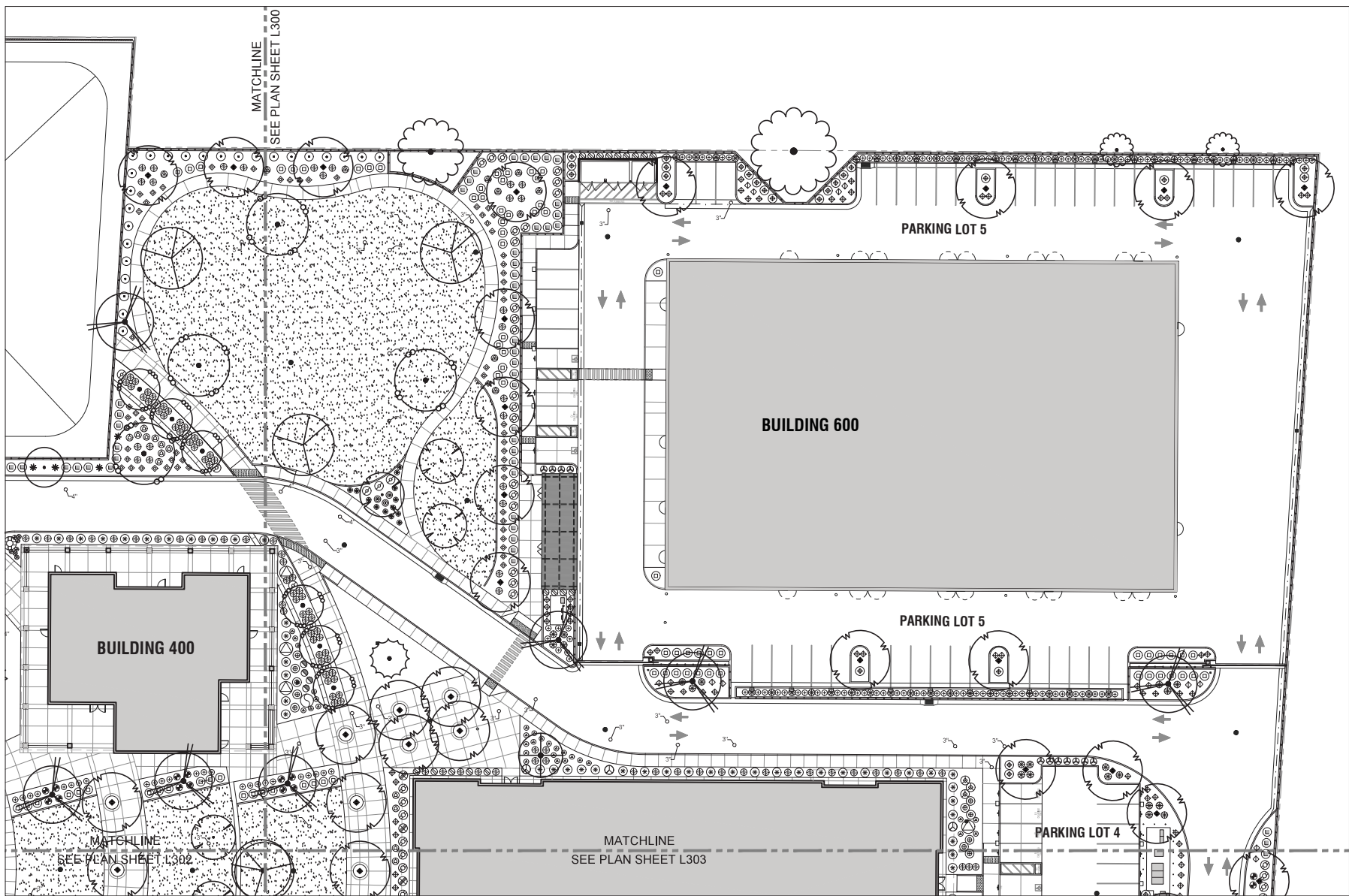
**LANDSCAPE PLANTING PLAN**



1" = 20'-0"



**David Sigler Associates**  
 Landscape Architect #3887  
 1000 W Shaw Ave, #1  
 Fresno, California 93711  
 E Mail: dsigler@sigler.com  
 Tel: (559) 578-2665  
 Fax: (559) 578-6161



SEE LANDSCAPE PLANTING LEGEND ON PLAN SHEET L307

DATE: 01/24/2025

**NEW ADMINISTRATION FACILITY EXPANSION**  
 TULARE COUNTY OFFICE OF EDUCATION  
 VISALIA, TULARE COUNTY, CA

REVISIONS


**MANGINI** ARCHITECTURE INTERIORS  
 www.mangini.com  
 MANGINI ASSOCIATES, INC.  
 15365 62nd Street Office  
 4833 West Imperial Ave. - Suite  
 Visalia, California 93221  
 (559) 737-2555 Fax

TITLE  
 LANDSCAPE PLANTING PLAN

**L301**  
 PROJECT 23098

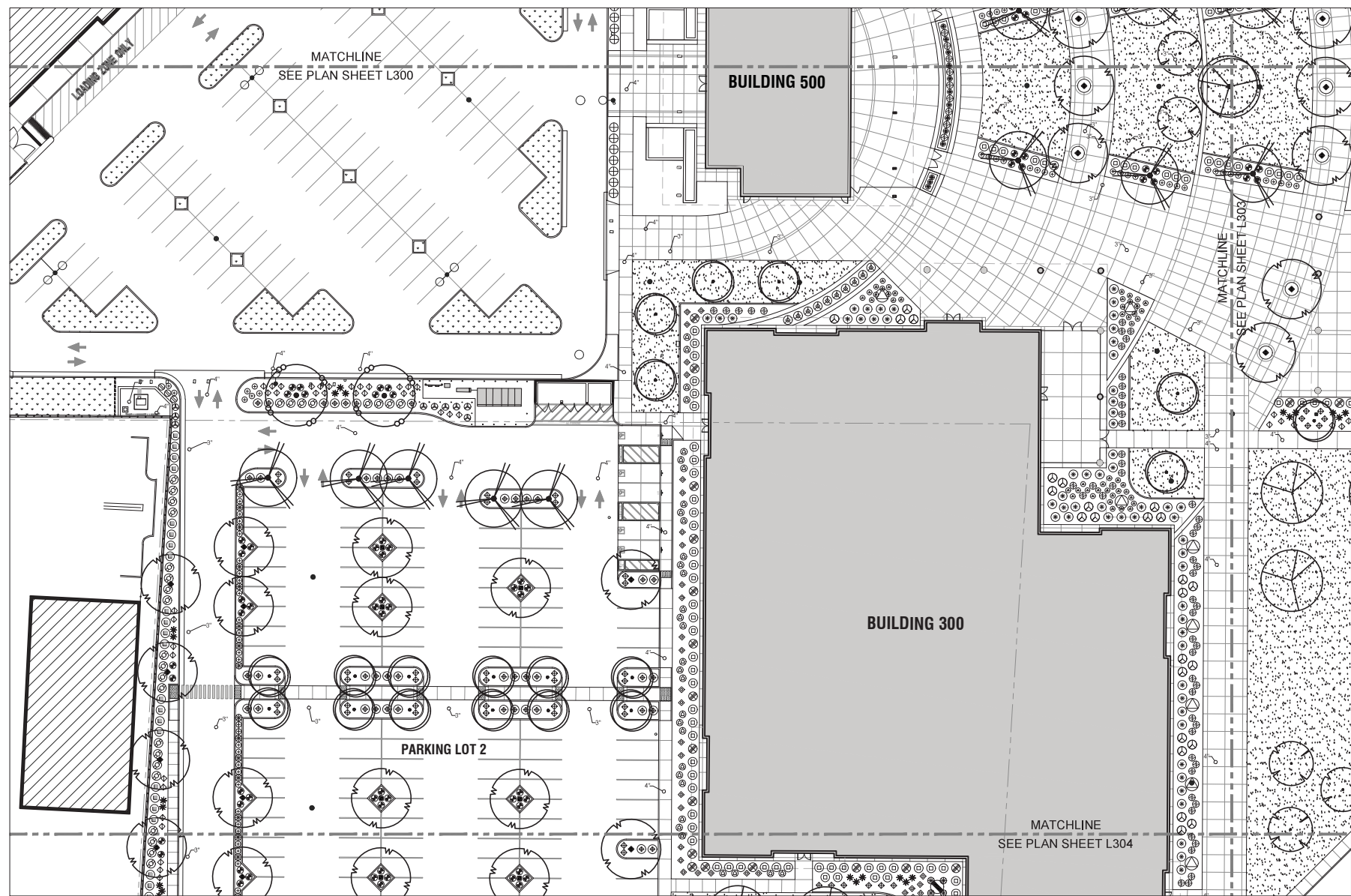
**LANDSCAPE PLANTING PLAN**



1" = 20'-0"



**David Sigler Associates**  
 Landscape Architect #23887  
 1088 W Shaw Ave. #2  
 Fresno, California 93711  
 E-Mail: dsigler@dsigler.com  
 Tel: (559) 578-2665  
 Fax: (559) 578-9161

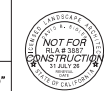


SEE LANDSCAPE PLANTING LEGEND ON PLAN SHEET L307

LANDSCAPE PLANTING PLAN



1" = 20'-0"



David Sigler Associates  
 Landscape Architect #2887  
 1000 W Shaw Ave, #2  
 Fresno, California 93711  
 E: david.sigler@dsigler.com  
 F: (559) 578-2665  
 P: (559) 578-9161

DATE: 01/24/2025

**NEW ADMINISTRATION  
 FACILITY EXPANSION**  
 TULARE COUNTY OFFICE OF EDUCATION  
 VISALIA, TULARE COUNTY, CA

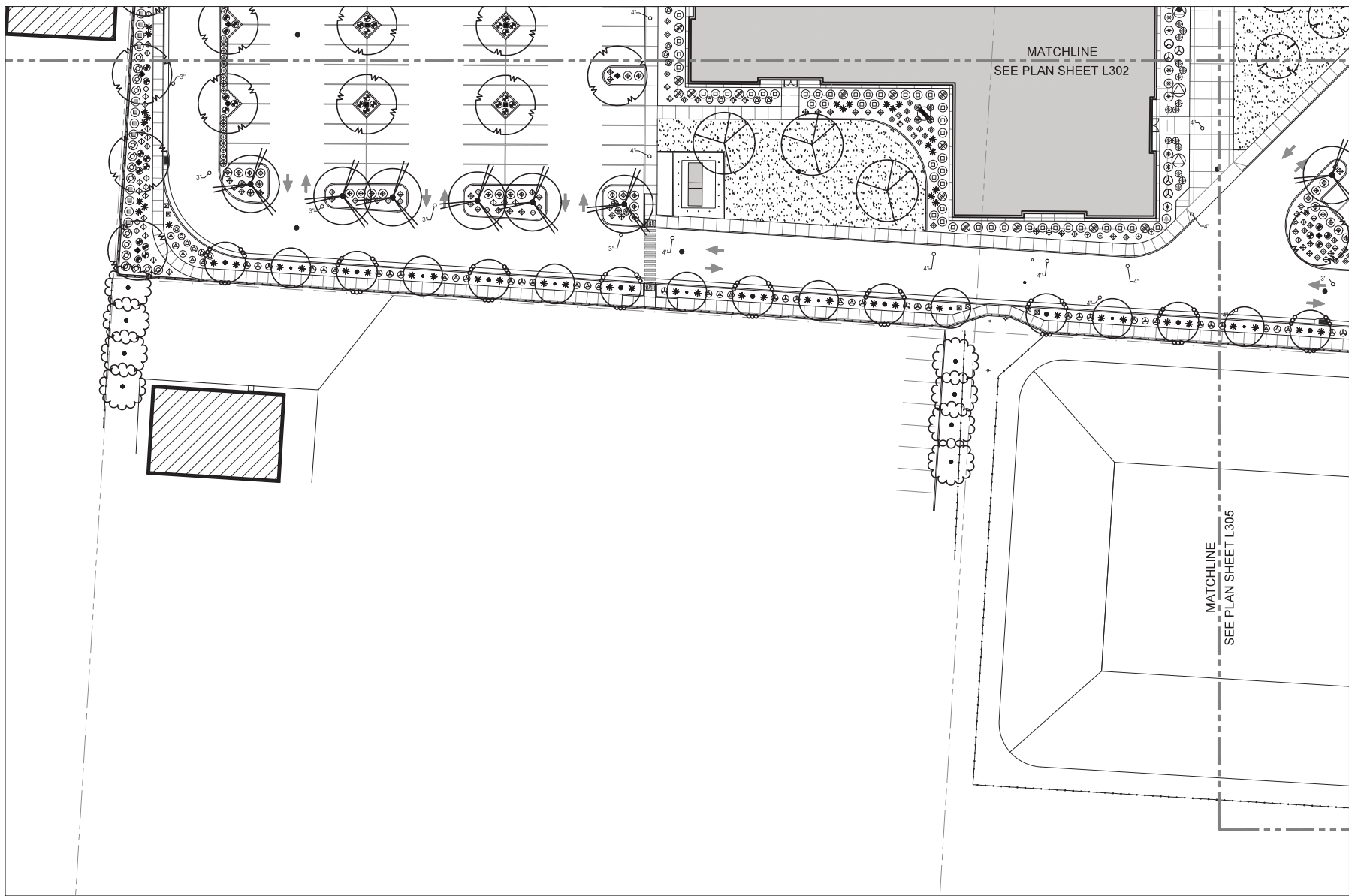
REVISIONS


**MANGINI** | ARCHITECTURE | INTERIORS  
 MANGINI ASSOCIATES, INC.  
 1550 W. Shaw Ave. Suite 400  
 Visalia, California 93291  
 P: (559) 578-2665  
 F: (559) 578-9161

TITLE  
 LANDSCAPE  
 PLANTING  
 PLAN

**L302**  
 PROJECT **23098**



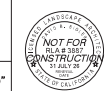


SEE LANDSCAPE PLANTING LEGEND ON PLAN SHEET L307

**LANDSCAPE PLANTING PLAN**



1" = 20'-0"



**David Sigler Associates**  
 Landscape Architect #2887  
 1000 W. Shaw Ave., #2  
 Fresno, California 93711  
 E-Mail: dsigler@dsigler.com  
 Tel: (559) 578-2665  
 Fax: (559) 578-9161

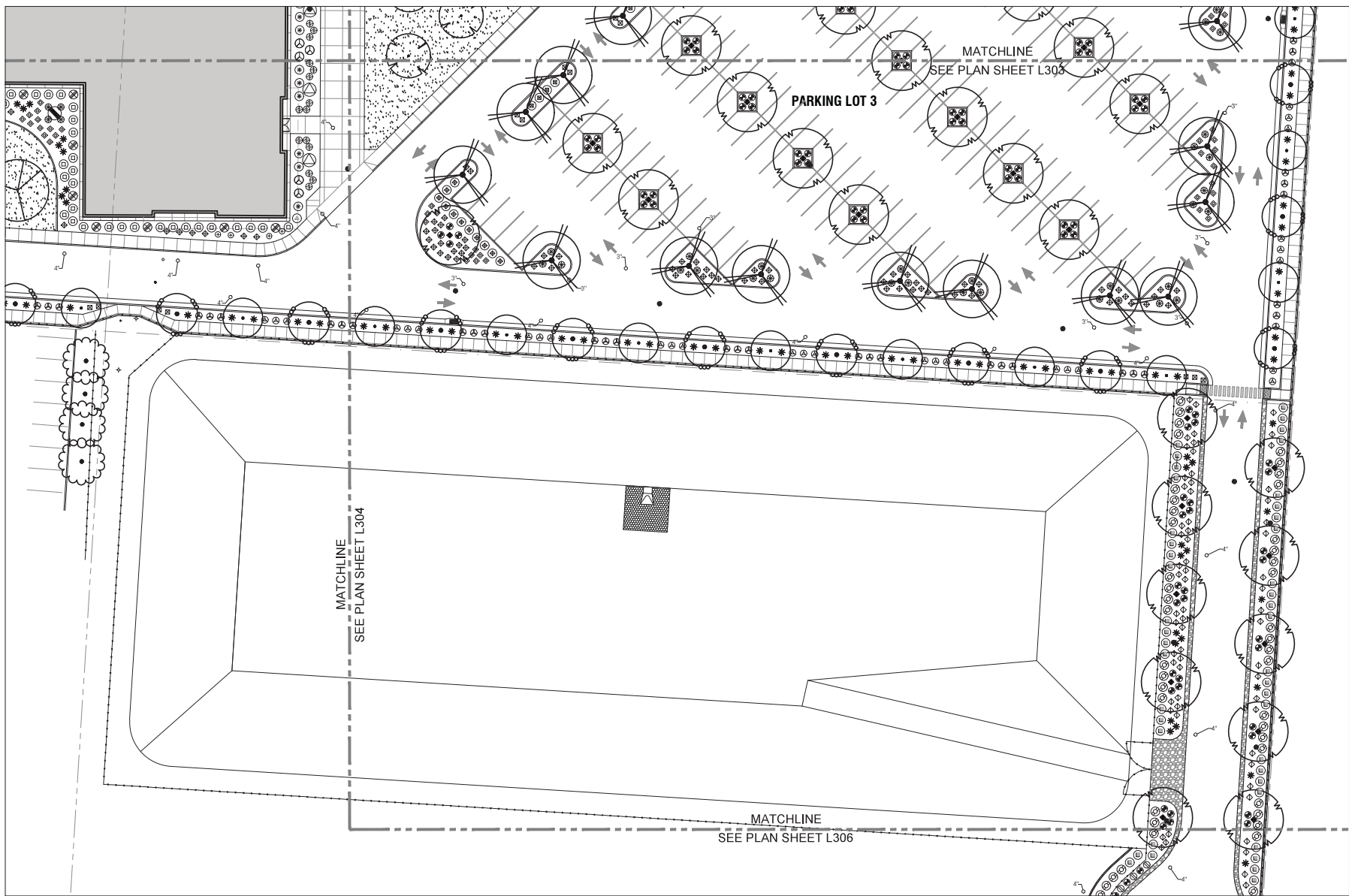
DATE: 01/24/2025

**NEW ADMINISTRATION  
 FACILITY EXPANSION**  
 TULARE COUNTY OFFICE OF EDUCATION  
 VISALIA, TULARE COUNTY, CA

REVISIONS


**MANGINI** ARCHITECTURE  
 INTERIORITY  
 www.mangini.com  
 4333 Shaw Avenue, 1st Floor  
 Visalia, California 93291  
 (559) 577-2268 Fax

TITLE  
 LANDSCAPE  
 PLANTING  
 PLAN  
**L304**  
 PROJECT **23098**

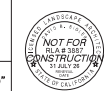


SEE LANDSCAPE PLANTING LEGEND ON PLAN SHEET L307

LANDSCAPE PLANTING PLAN



1" = 20'-0"



David Sigler Associates  
 Landscape Architect #3887  
 1000 W Shaw Ave, #2  
 Fresno, California 93711  
 E-Mail: dsigler@dsigler.com  
 Tel: (559) 578-2665  
 Fax: (559) 578-6161

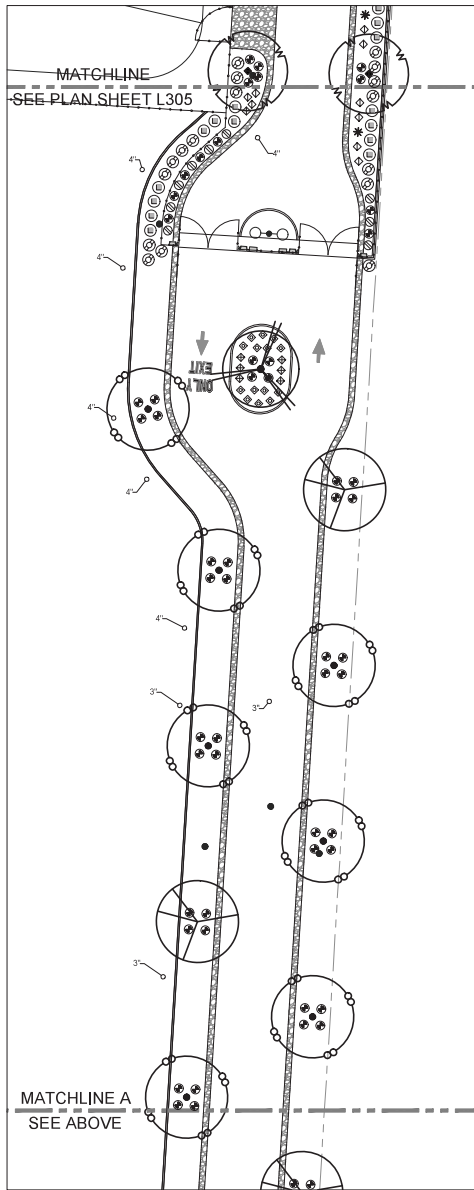
DATE: 01/24/2025

**NEW ADMINISTRATION  
 FACILITY EXPANSION**  
 TULARE COUNTY OFFICE OF EDUCATION  
 VISALIA, TULARE COUNTY, CA

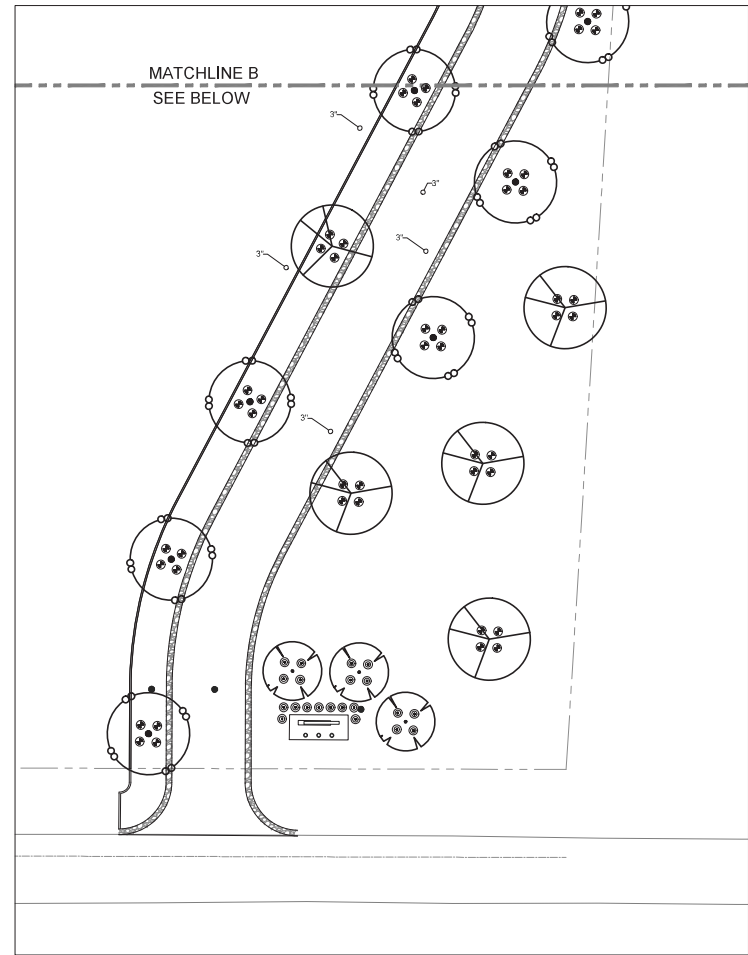
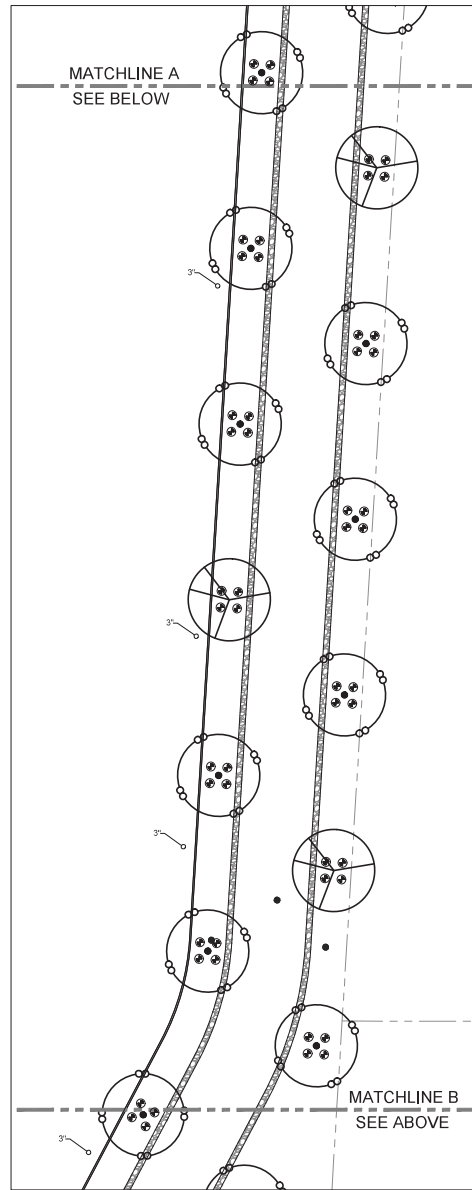
REVISIONS


**MANGINI** ARCHITECTURE  
 INTERIORITY  
 www.mangini.com  
 MANGINI ASSOCIATES, INC.  
 4533 Shaw Avenue, 1st Floor  
 Visalia, California 93291  
 (559) 577-2555 Fax

TITLE  
 LANDSCAPE  
 PLANTING  
 PLAN  
**L305**  
 PROJECT **23098**



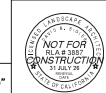
SEE LANDSCAPE PLANTING LEGEND ON PLAN SHEET L307



LANDSCAPE PLANTING PLAN



1" = 20'-0"



**David Sigler Associates**  
 Landscape Architect #2887  
 1088 W Shaw Ave, #2  
 Fresno, California 93711  
 E Mail: dsigler@dsigler.com  
 Tel: (559) 578-2665  
 Fax: (559) 578-9161

DATE: 01/24/2025

**NEW ADMINISTRATION  
 FACILITY EXPANSION**  
 TULARE COUNTY OFFICE OF EDUCATION  
 VISALIA, TULARE COUNTY, CA

REVISIONS


**MANGINI** | ARCHITECTURE  
 INTERIORITY  
 www.mangini.com  
 MANGINI ASSOCIATES, INC.  
 4323 Shaw Avenue, 1st Floor  
 Visalia, California 93291  
 (559) 577-2500 Fax

TITLE  
 LANDSCAPE  
 PLANTING  
 PLAN  
**L306**  
 PROJECT **23098**