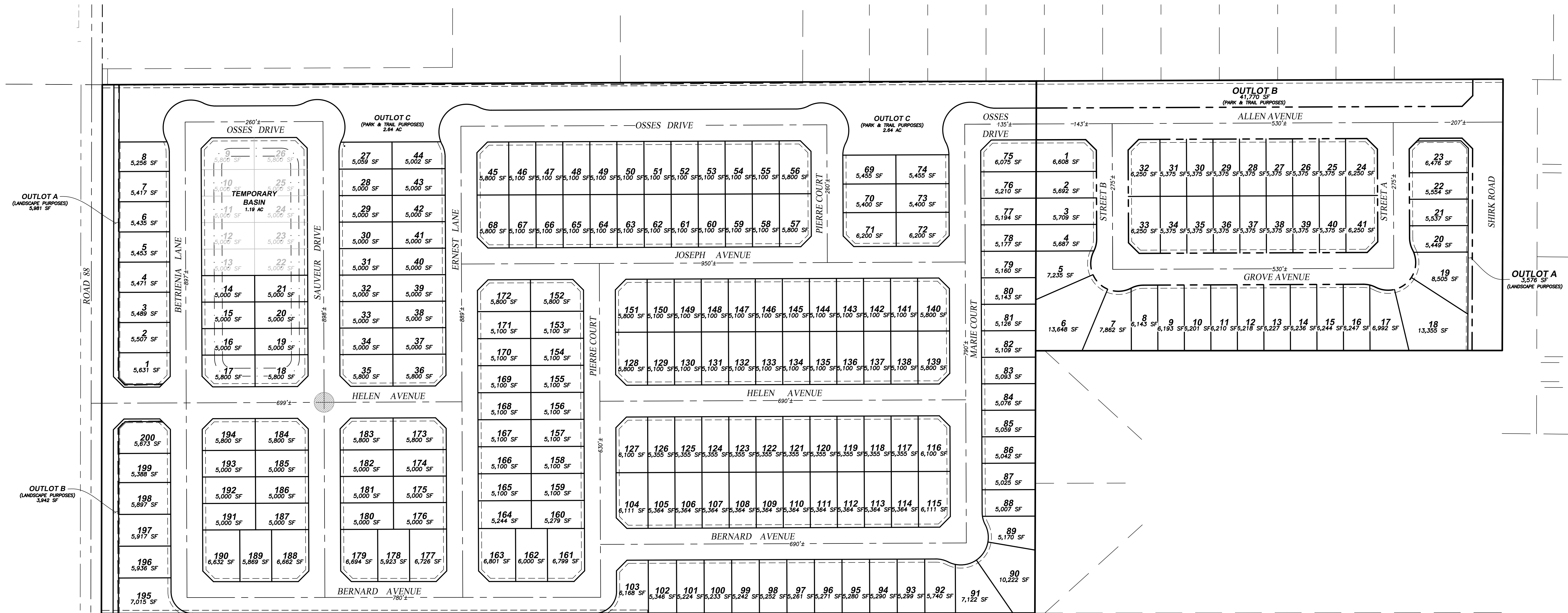
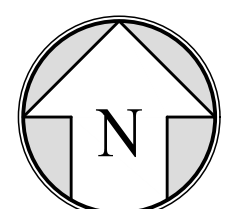


VESTING TENTATIVE SUBDIVISION MAP SHEPHERDS RANCH

A PORTION OF THE NORTHEAST QUARTER OF SECTION 28, T.18S., R.24E., MOUNT DIABLO BASE AND MERIDIAN,
IN THE UNINCORPORATED AREA OF THE COUNTY OF TULARE, STATE OF CALIFORNIA.



E:\PROJECTS\2021\210315\ACAD\TENTATIVE MAP\210315 - ISLANDS 6/3/2022 4:08 PM



100' 0' 100'
SCALE: 1" = 100'