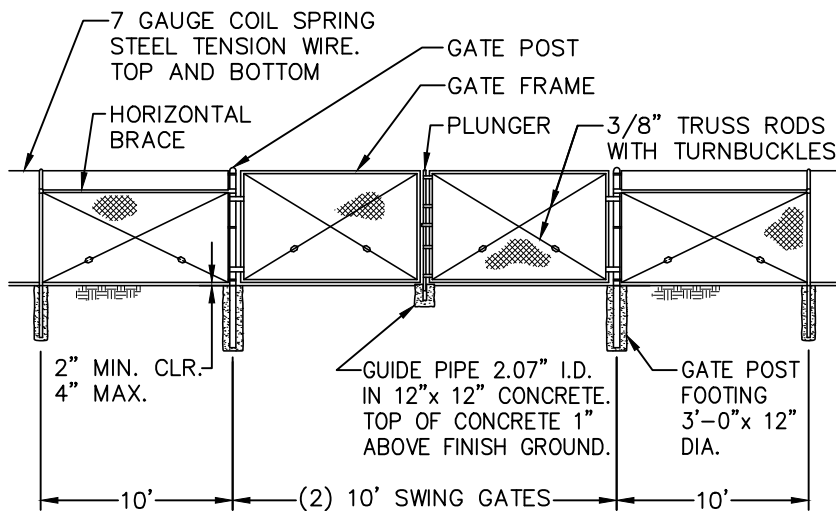
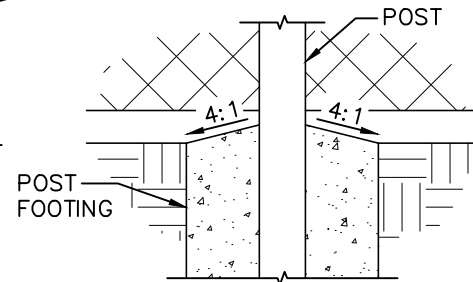
**END OR CORNER POST****GATE****POST FOOTING DETAIL****POST AND BRACE  
SIZE REQUIREMENTS**

DESCRIPTION	MIN. SIZE	MIN. WEIGHT LBS./FT.
END, LATCH OR CORNER POSTS	2.875"	5.80
LINE POSTS	2.375"	3.65
BRACES	1.660"	2.27
GATE POSTS	5.563"	14.63
GATE FRAMES	1.900"	2.72
GATE PLUNGER	1.600"	2.27

**NOTES:**

1. POSTS, BRACES AND GATE FRAMES SHALL BE COMMERCIAL QUALITY, OR BETTER, WELDABLE STEEL.
2. POST TOPS, STRETCHER BARS AND OTHER REQUIRED FITTINGS AND HARDWARE SHALL BE STEEL OR MALLEABLE IRON OR WROUGHT IRON.
3. CHAIN LINK FABRIC SHALL BE 9 GAUGE WIRE WOVEN INTO APPROXIMATELY 2" MESH. FABRIC SHALL HAVE A KNUCKLE BOTTOM AND TWISTED TOP.
4. FOR A 6' TALL FENCE, LINE POSTS SHALL BE A MINIMUM OF 8'-6" LONG. GATE, END AND CORNER POSTS SHALL BE A MINIMUM OF 9'-0" LONG.
5. END, CORNER, GATE AND LATCH POSTS SHALL BE BRACED TO THE NEAREST LINE POST WITH HORIZONTAL OR DIAGONAL BRACES USED AS COMPRESSION MEMBERS AND 3/8" STEEL TRUSS RODS WITH TURNBUCKLES USED AS TENSION MEMBERS.
6. GATE FRAMES SHALL BE CROSSED TRUSSED WITH 3/8" ADJUSTABLE TRUSS RODS. THE CORNERS OF GATE FRAMES SHALL BE FASTENED TOGETHER WITH A MALLEABLE IRON FITTING OR WELDED AND GALVANIZE COATED OVER WELDS.
7. GATES SHALL BE HUNG BY AT LEAST TWO STEEL OR MALLEABLE IRON HINGES NOT LESS THAN THREE INCHES IN WIDTH AND SHALL HAVE A MALLEABLE CATCH AND LOCKING ATTACHMENT.
8. ALL CHAIN LINK FENCE MATERIAL SHALL BE GALVANIZED.
9. CHAIN LINK FENCING FOR SCREENING MAY BE REQUIRED BY THE CITY ENGINEER.
10. VINYL COATING MAY BE REQUIRED BY THE CITY ENGINEER.
11. NARROWER GATE SIZES SHALL BE SUBJECT TO APPROVAL BY THE CITY ENGINEER.
12. 7' TALL FENCES MAY BE REQUIRED BY CITY ENGINEER. FOR A 7' TALL FENCE, LINE POSTS SHALL BE A MINIMUM OF 9'-6" LONG. GATE, END AND CORNER POSTS SHALL BE A MINIMUM OF 10'-0' LONG.

APPROVED BY:

  
 CITY ENGINEER
09/16/16  
DATE

R.P.E. 81734

CITY OF VISALIA  
DESIGN & IMPROVEMENT STANDARDS6 FOOT – 7 FOOT TALL  
CHAIN LINK FENCING

REVISIONS

07/19/16

BK 2016

F-2