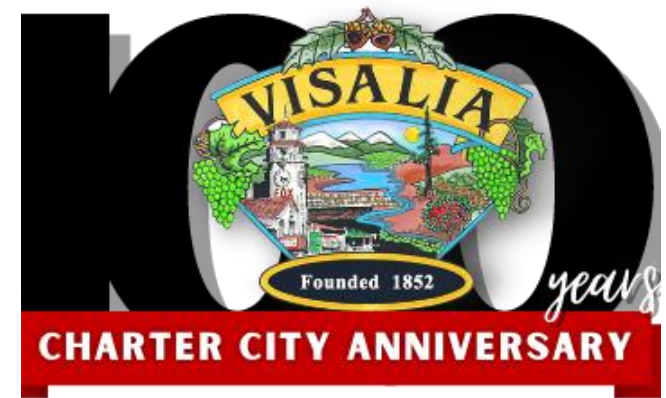


NEIGHBORHOOD TRAFFIC MANAGEMENT PROGRAM

August 2023





AGENDA

Neighborhood Traffic Management Program (NTMP)

Policy

Traffic Calming Measures

NTMP Process

Statistics

Example

Q & A

NTMP POLICY

Council approved and adopted
2011



NEIGHBORHOOD TRAFFIC MANAGEMENT PROGRAM (NTMP) POLICY

- **For** – Residential neighborhoods experiencing a high volume of traffic and speed
- **Purpose** - Tool to uniformly address traffic calming related issues in neighborhoods
- **Goal** – Improve residents' quality of life

TRAFFIC CALMING MEASURES

SIGNS

Turn Prohibitions



No Parking



Stop Signs



NARROW ROADWAY WIDTH

Traffic Circles



Chicanes



Median Island



DIVERTERS

Island



Right Turn



Semi



- Complete roadway closures not allowed through the NTMP process

TRAFFIC CALMING MEASURE

Speed Table



Speed Bump



NTMP PROCESS

NTMP PROCESS



Initial Request



Traffic Studies



Public Meeting/Develop Plan



Petitions/Obtain Consensus



Implementation/Construction



Evaluation

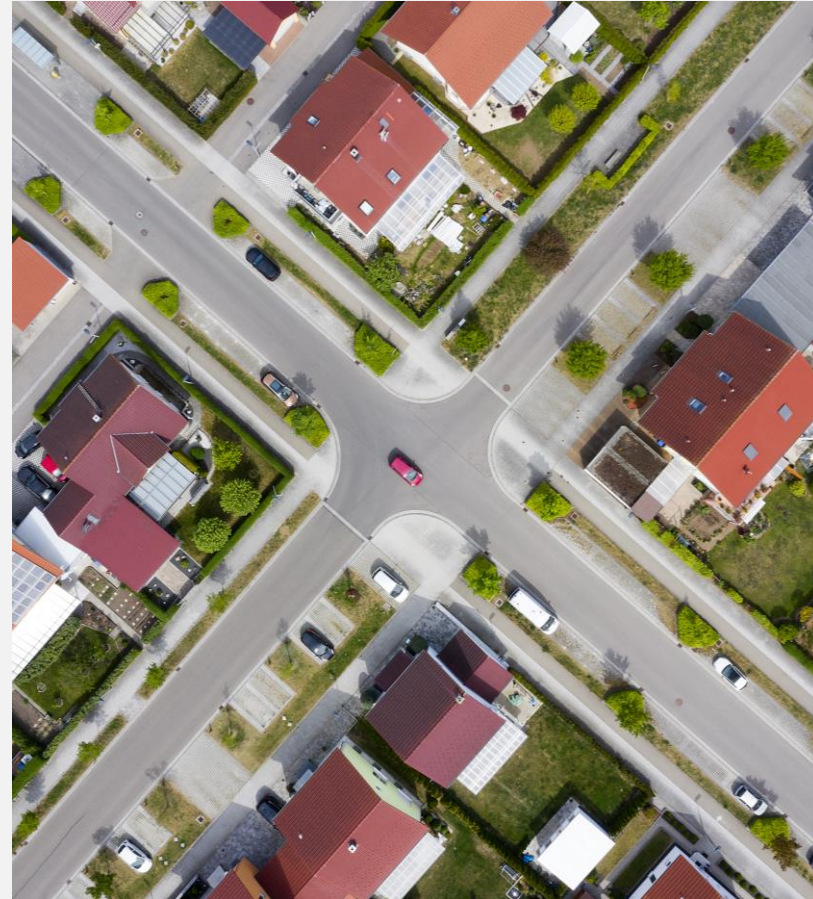
INITIAL REQUEST

- Neighborhood initiates
- Roadway eligible?



ELIGIBLE ROADWAYS

- Neighborhood street - 25 MPH speed limit
- Existing streets – Policy not intended for new development
- Paved and maintained by the City



NTMP PROCESS



Initial Request



Traffic Studies



Public Meeting/Develop Plan



Petitions/Obtain Consensus



Implementation/Construction



Evaluation

TRAFFIC STUDIES

- Study area
- Collect speed & traffic volume data
- Minimum NTMP criteria met?



TRAFFIC STUDIES

NTMP Minimum Thresholds

- Both volume and speed criteria must be met to qualify

Street Classification (posted speed limit)	Average Daily Traffic Volume (vehicles per day)	85 th Percentile Speed (mph)
Residential (25 MPH)	Greater than 750	30 mph or greater

SPEEDING

- **85th Percentile Speed**
(Critical Speed)
 - Not average speed
 - Used in traffic engineering field
 - Document a speeding problem



NTMP PROCESS



Initial Request



Traffic Studies



Public Meeting/Develop Plan



Petitions/Obtain Consensus



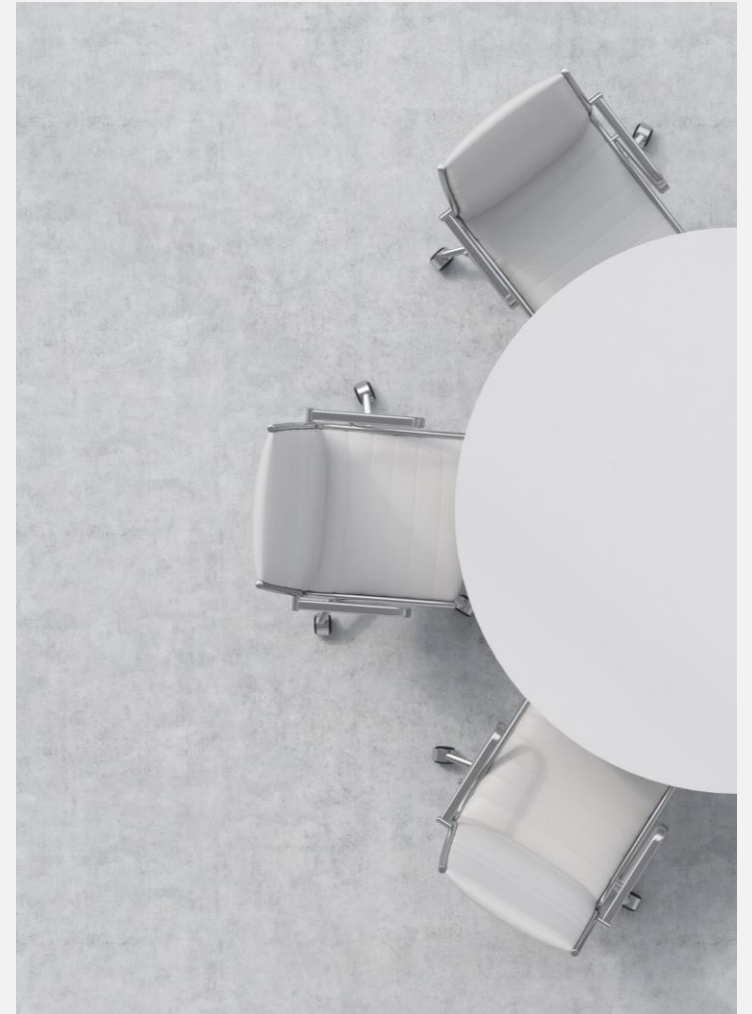
Implementation/Construction



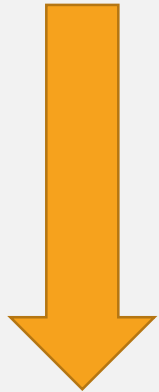
Evaluation

PUBLIC MEETING/DEVELOP PLAN

- Staff & Neighborhood committee meet
- Present traffic study results
- Discuss NTMP process
- Recommend traffic calming measures
- Subject to Fire Dept approval



NTMP PROCESS



Initial Request



Traffic Studies



Public Meeting/Develop Plan



Petitions/Obtain Consensus



Implementation/Construction



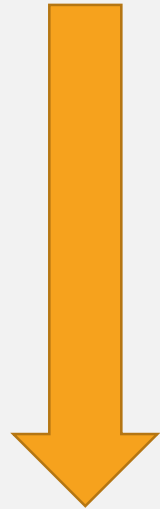
Evaluation

PETITIONS/OBTAIN CONSENSUS

- Homeowner act as volunteer liaison
- Petition boundary area prepared by City
- Minimum 80% property owner approval
- Location requires approval of all adjacent property owners
- 4 months to complete. 1 month extension allowed.
- If fail to complete, process stops. Wait 1 year to reapply



NTMP PROCESS



 Initial Request

 Traffic Studies

 Public Meeting/Develop Plan

 Petitions/Obtain Consensus

 **Implementation/Construction**

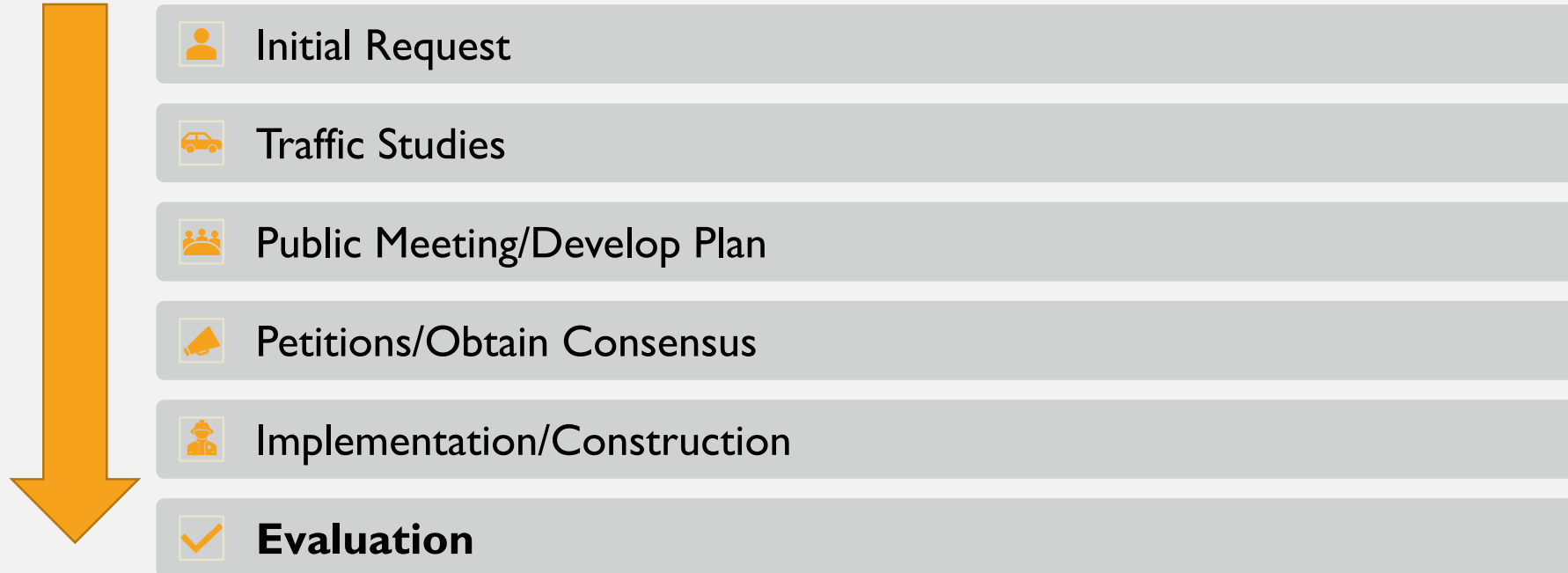
 Evaluation

IMPLEMENTATION CONSTRUCTION

- Signs and temporary measures – City pay 100%
- 90-day test period for temporary traffic calming measure



NTMP PROCESS



EVALUATION

Perform second traffic study



```
graph TD; A[Perform second traffic study] --> B[Results?]; B --> C[Not favorable... Remove]; B --> D[Favorable... Continue];
```

Results?

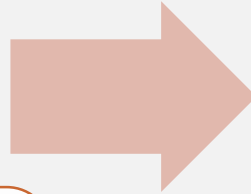
Not favorable... Remove

Favorable... Continue

PERMANENT INSTALLATION

Neighborhood Consensus for Permanent

- ⑩ Circulate 2nd Petition
- ⑩ Minimum 80% property owner approval
- ⑩ Adjacent property owners' approval



Install Permanent Traffic Calming

- ⑩ Impacted neighborhood fund minimum 50% of cost

NEIGHBORHOOD STATISTICS



Speed related traffic concerns

- 20 per year

Requests for STOP signs

- 15 per year

STOP signs installed

- 1 intersection per year

Inquiries for NTMP traffic calming

- 10 per year

NTMP criteria met (both speed & volume)

- 1 per year

3 E_s

Engineering



Education



Enforcement





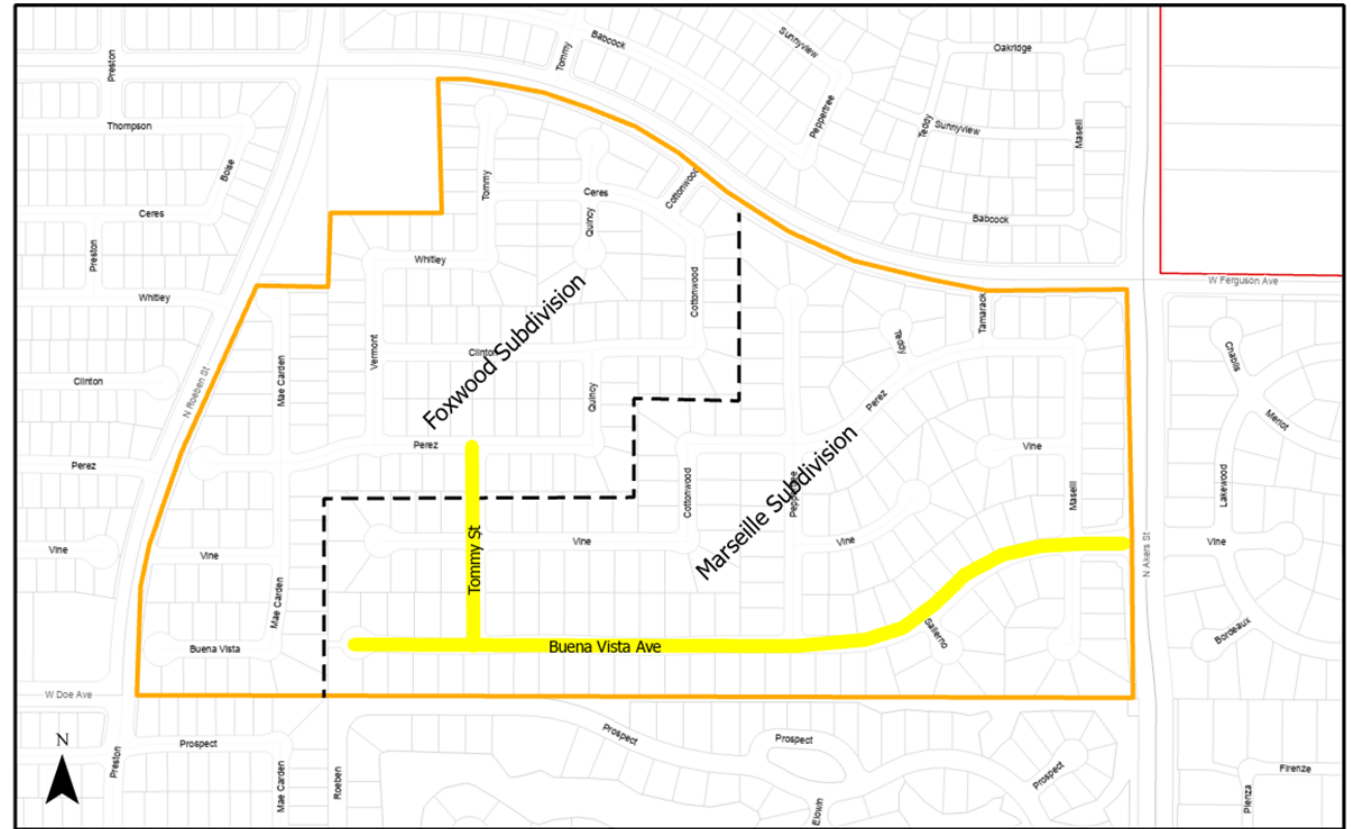
EXAMPLE

Visalia Neighborhood

2014

VISALIA NEIGHBORHOOD 2014

- **Initial Request/Concern**
 - Speeding on Buena Vista and Tommy
 - Cut through traffic on Buena Vista



VISALIA NEIGHBORHOOD 2014

- **Traffic Study**

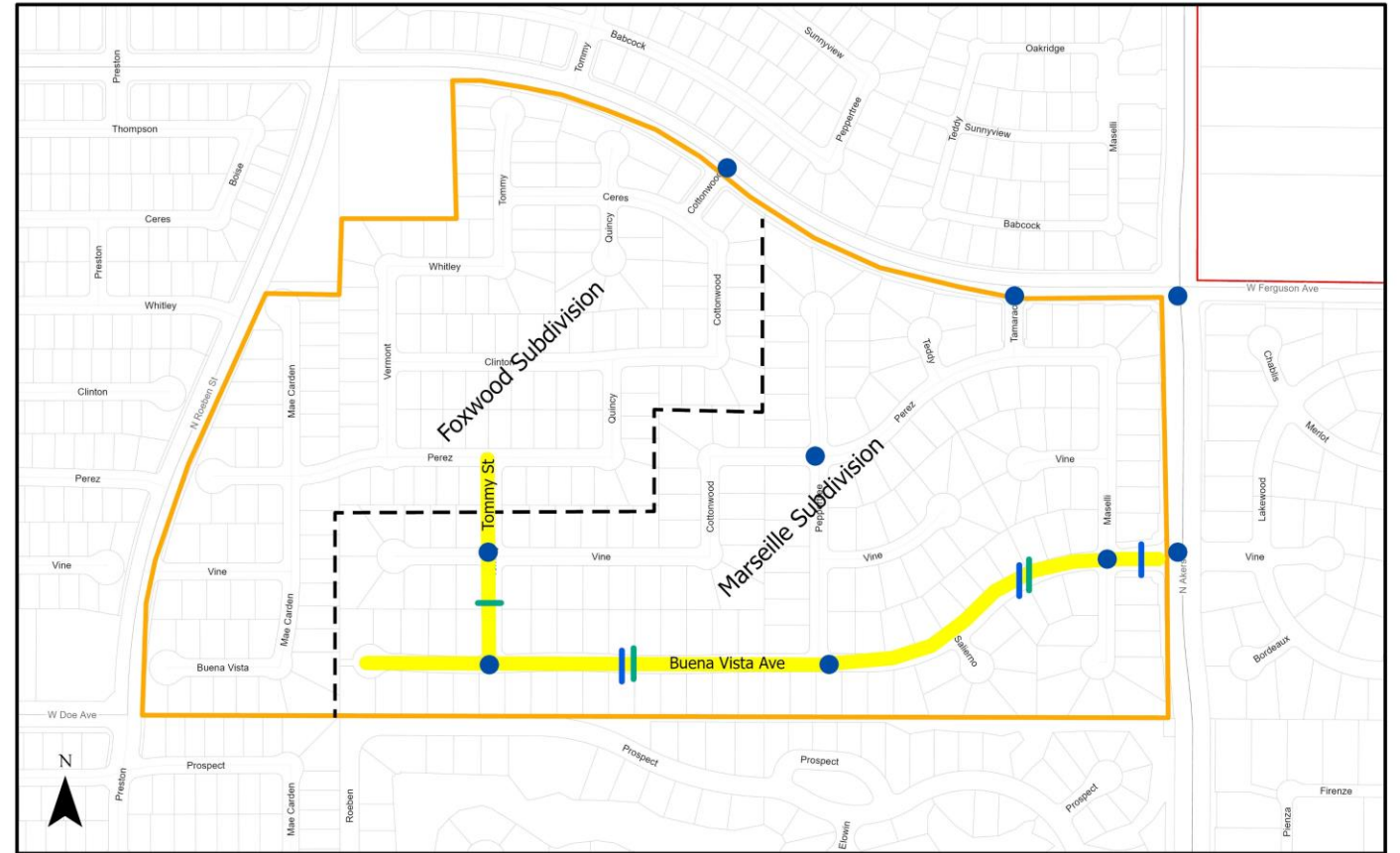
- Traffic data collected

- **Results**

- Buena Vista met criteria
- Tommy did not meet criteria
- Cut through traffic not documented

- **Recommendation**

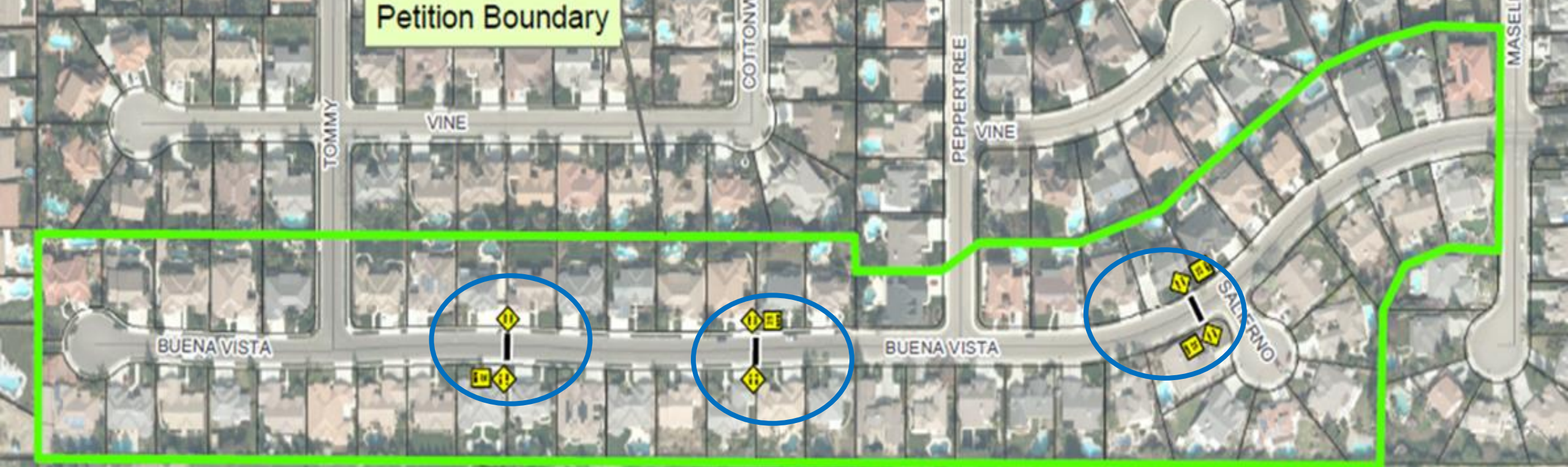
- Install 3 speed tables on Buena Vista





VISALIA NEIGHBORHOOD 2014

- Public Meeting/Develop Plan
 - Neighborhood Meeting
 - Action Plan



VISALIA NEIGHBORHOOD 2014

- Petitions/Obtain Consensus
 - Unable to locate speed tables
 - Process halted

NTMP POLICY DISCRETIONARY ITEMS



Discretionary

- Threshold Criteria – Traffic Volume
 - Current Policy - 750 vehicles per day or higher
- Petition/Consensus – Percent homeowner approval
 - Current Policy - 80% minimum
- Petition/Consensus – Time allotted to complete process
 - Current Policy – 4 months with 1 month extension
- Funding of permanent traffic calming measure
 - Current Policy - Minimum 50% of cost paid by homeowners

QUESTIONS & ANSWERS

Neighborhood Traffic Management Program

