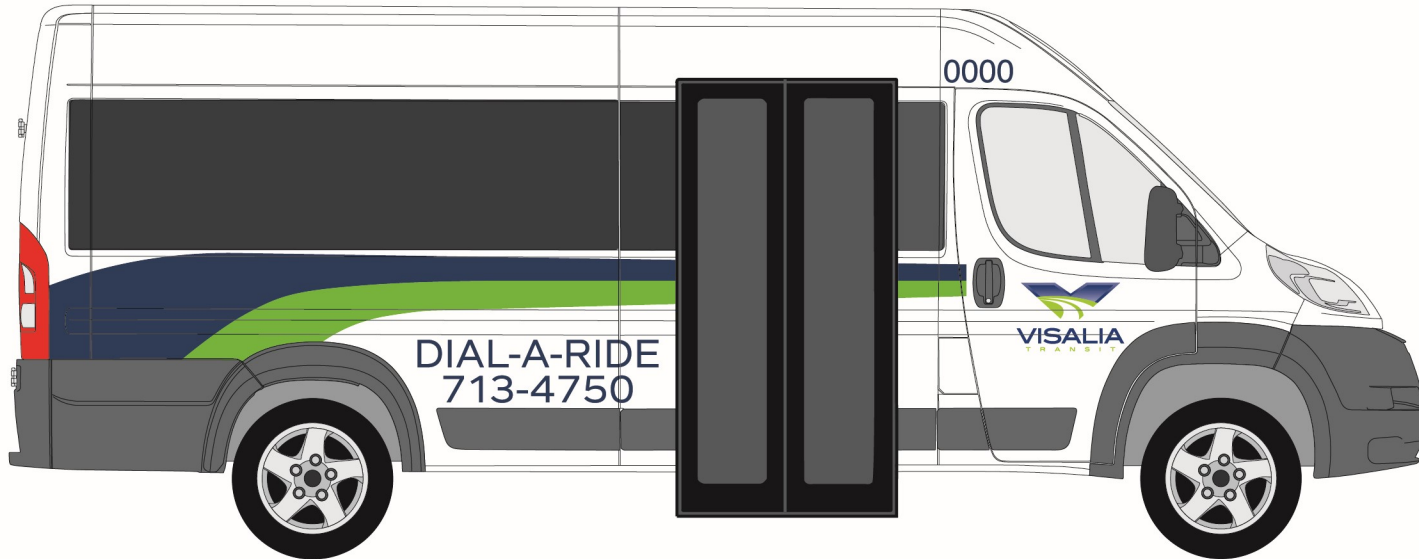
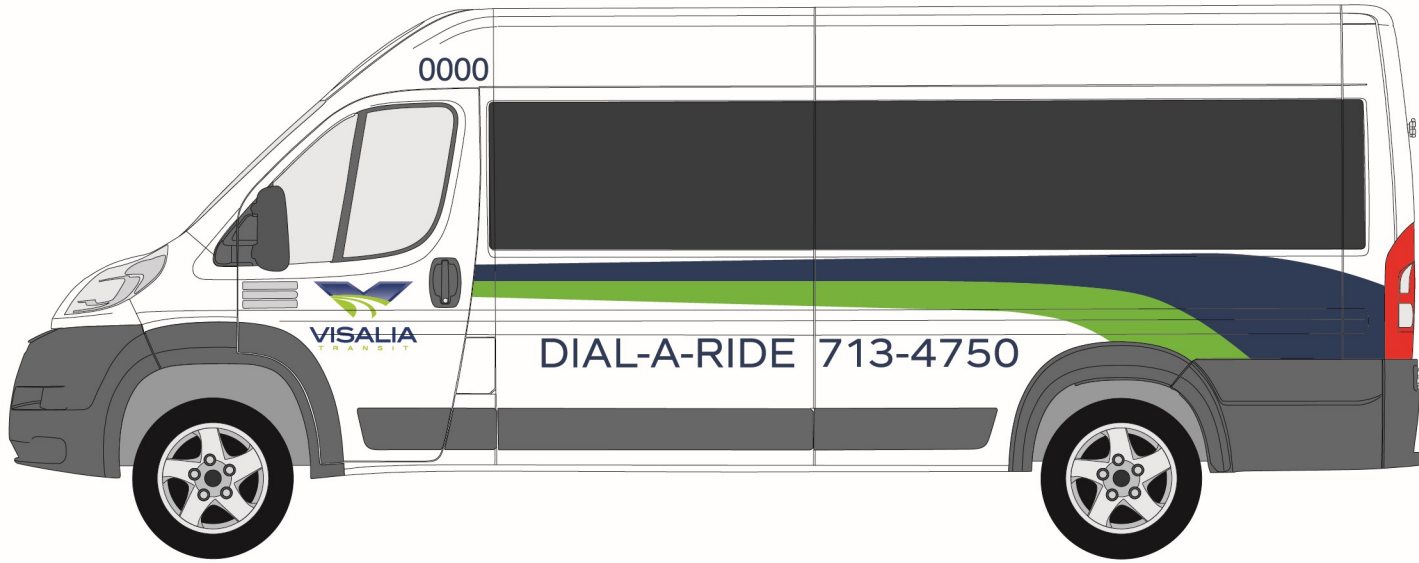


CalACT MBTA RFP #20-01 - Class P - Quote Sheet (Rev 2022)				
Vehicle Type:	Class P - BraunAbility Promaster (Buy America Compliant)		Date:	4/24/2026
Contact:	Carmen Quevado		Ramp Info:	<input checked="" type="checkbox"/> Bra <input checked="" type="checkbox"/> Front Side Loader
Agency:	City of Visalia		Seat Material Level:	Vinyl
Address:	425 E. Oak Ave, Suite 301		Seat Color:	Gray
City, State, Zip:	Visalia, CA 93291		Flooring and Color:	Altro Meta Storm (Gray)
Phone:	559-713-4592		Salesperson:	Mike Farr
E-Mail:	Caleb.Bowman@visalia.city		Salesperson Cell:	909-730-5319
Delivery:	180 Days from PO		Salesperson E-Mail:	mfarr@model1.com
Quantity:	Description	Price	Ext. Price	ADA
1	Braun - Lonestar - Class P - 3500 159" 8-pass/2WC	\$148,464.00	\$148,464.00	\$78,265.00
Published Options				
1	15 - Rear Step-Up to Seating Area in Rear of Van	Std	Std	Std
1	21 - Shoulder Belt Mount kit - Seatbelts Same Direction Rear Bench	Std	Std	Std
1	45 - Drivers Running Board	Std	Std	Std
1	49 - Horizontal Wall Grabrail at Wheelchair Position	Std	Std	Std
1	51 - Braun Ramp ILO OEM	Std	Std	Std
1	62 - External Power Door Lock Switch	Std	Std	Std
1	63 - Grab Bar Rear Seating Area	Std	Std	Std
1	64 - Roof Mounted Grab Bar	Std	Std	Std
1	65 - Wheelchair Area Grab Bar	Std	Std	Std
1	72 - Rear Tow Hooks	Std	Std	Std
1	82 - Rear Backup Camera and Monitor	Std	Std	Std
1	97 - Delivery Zone 1	\$886.00	\$886.00	
1	*112 - Bus Style electric bus door (3500 Only. N/A for 1500)	Std	Std	Std
Non-Published Options				
1	Q-Straint ONE Tie Down System (2 Positions)	\$5,000.00	\$5,000.00	
1	Freedman Seat Link System	\$0.00	\$0.00	
1	Plug Door	\$12,050.00	\$12,050.00	
1	In Floor Ramp	\$0.00	\$0.00	
1	Ram Tablet Mount	\$500.00	\$500.00	
1	Router/Antenna Install	\$4,700.00	\$4,700.00	
1	REI 6 Camera With Install (Visalia Spec)	\$6,331.00	\$6,331.00	
1	Storage Box/DVR Holder in place of co-pilot seat	\$1,574.00	\$1,574.00	
1	Fabricate/Install Bracket for GFI Genfare Fast Fare (See Pictures)	\$950.00	\$950.00	
1	Graphics (Visalia Dial A Ride Layout)	\$2,250.00	\$2,250.00	
Summary				
			Class P - Base Price	\$148,464.00
			Published Options	\$886.00
			Non-Published Options	\$33,355.00
			Total	\$182,705.00
			Doc Prep Fee	\$85.00
<div style="border: 1px solid black; padding: 2px;"> The Non-Taxable Amount is the ADA Equipment in the Base and Added as Options </div>			Non-Taxable	\$78,265.00
			Taxable Amount	\$104,525.00
<div style="border: 1px solid black; padding: 2px; display: inline-block;"> Visalia* ▼ </div>			1685 Tax Total	\$8,884.63
			Sub-Total	\$191,674.63
			CalACT Fee	\$2,740.58
			DMV E-File Fee:	\$33.00
			DMV Fee	\$0.00
			Tire Fee	\$12.25
			Total	\$194,460.45
			Number of Units	2
			Final Total	\$388,920.90

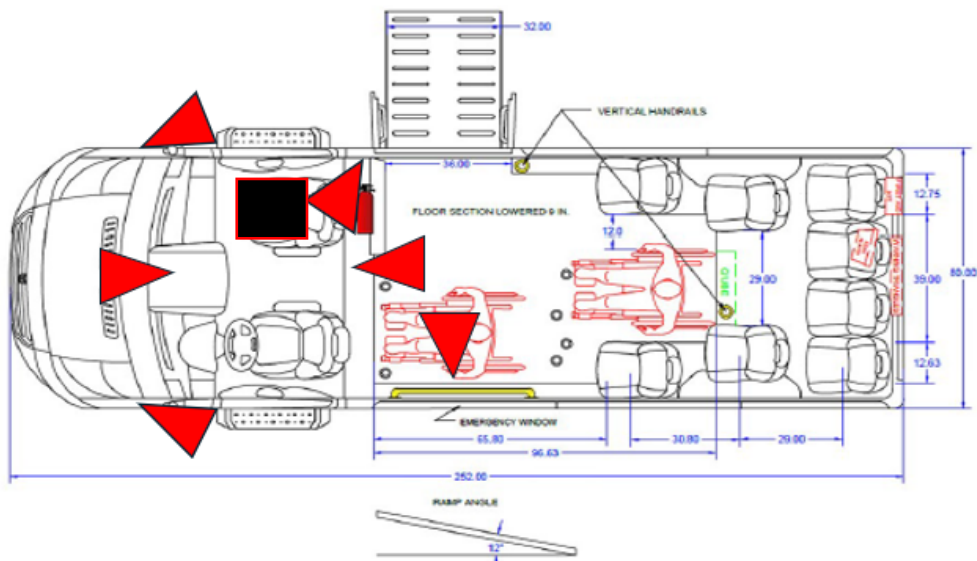
Purchasing of vehicles requires a CALACT membership, letter of assignment, and payment of procurement fee. If you have any questions, please contact CALACT direct at 916-920-8018.





CAMERA SPECS

Quantity	Part Number	Description
1	HD6-1200W-6-1TB HDD	HD6-1200W DVR,6 CAMS,1TB HDD
1	710809	DVR, HD6-1200 12 CH WIFI
1	512002	CABLE, POWER, HD SERIES DVR, 16'
1	710639	HDD MODULE, HD5/HD6, 1TB
1	710735	CAM, EB AHD 115D HFOV NO-IR 781
2	710669	CAM, EYEBALL AHD 115D HFOV 781
1	710688	CAM, MINIDOME AHD 115D HFOV, 778
2	710816	CAM, MINI-EB AHD 180HFOV 781
4	512168	CABLE, CAMERA TO DVR, 25'
2	511966	CABLE, CAMERA TO DVR, 30'
1	530093	CABLE, USB 3.0, A-M/B-M, 3FT.
3	512912	ADAPTOR, AHD 6PIN TO 4PIN W/ AUDIO
1	760953	KIT, EYEBALL PEDESTAL & MOUNT

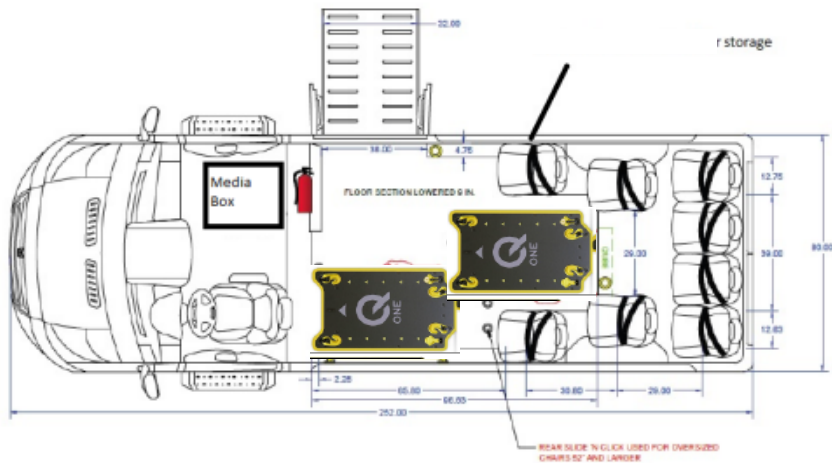




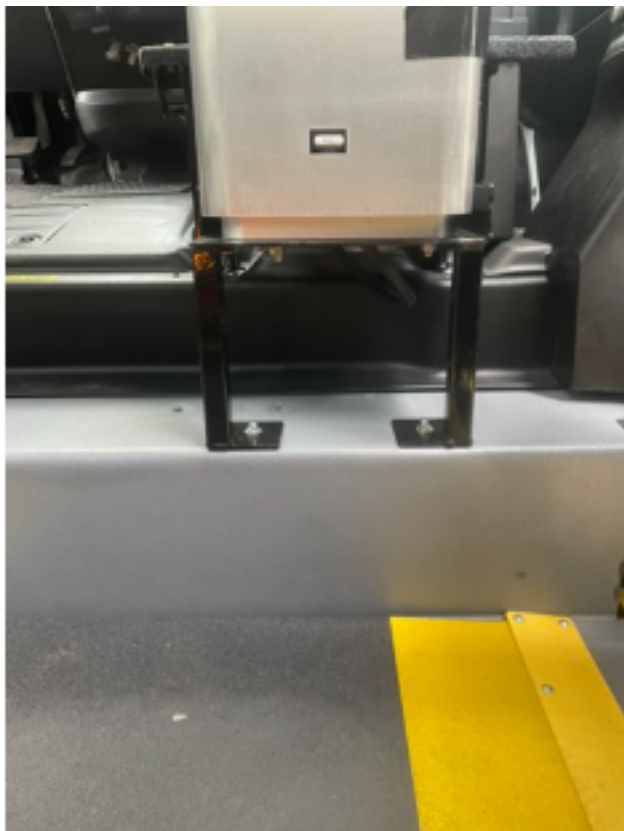
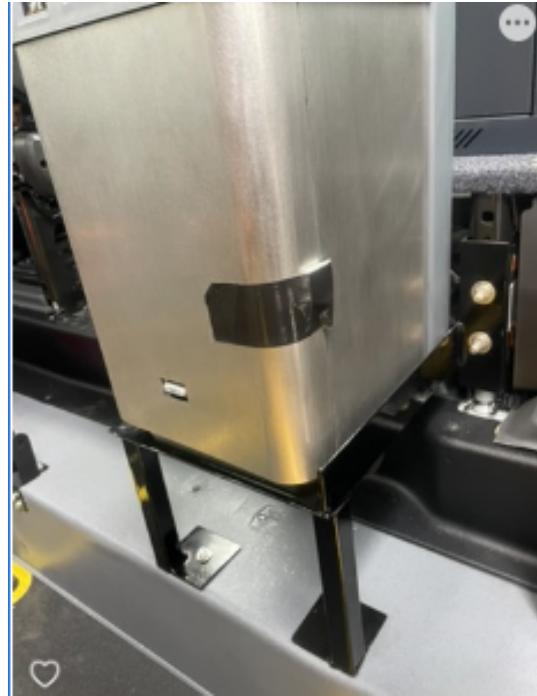
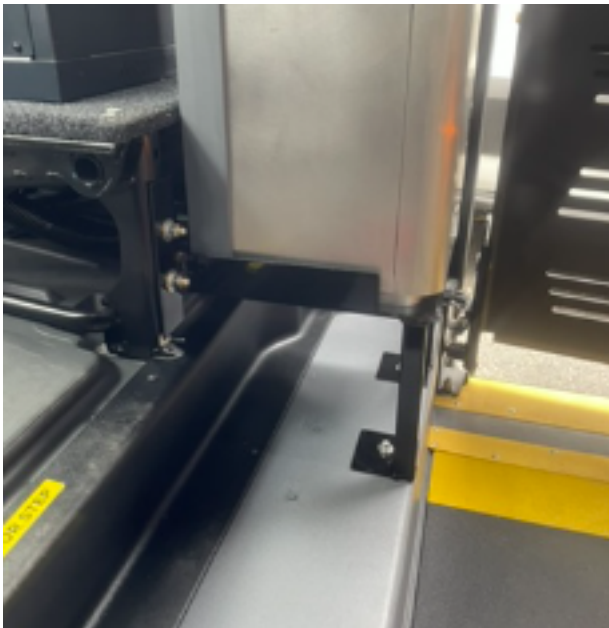
BraunAbility ProMaster 3500



*Photos not to exact specifications



FAREBOX BRACKET EXAMPLES



ProMaster Simple Stow™

»»» Infloor



 BraunAbility®

 MODEL



Industry-First Infloor Ramp with Wide Single Panel Door



ProMaster Simple Stow™



Standard Equipment

- Buy America compliant design
- Lowered floor, side entry, long cut conversion
- Manual infloor 33" ADA compliant ramp with 12.5° ramp angle and 1,000# capacity with bend-free handle
- Large single panel passenger entry doorway - 37.5" x 72"
- 13" step-in height
- Gerflor flooring
- Insulated ABS interior ceiling & walls
- New exhaust system
- New Freedman GO-ES seating
- Safety Kit (first aid kit, fire extinguisher, triangles)
- Back up alarm - interlock system
- LED strip lighting
- Emergency exit
- Driver and passenger sidesteps
- Handrails & decals
- 36" A&M Systems power door
- Fast idle
- Amber LED light



Q'Straint One (Qty. 1)

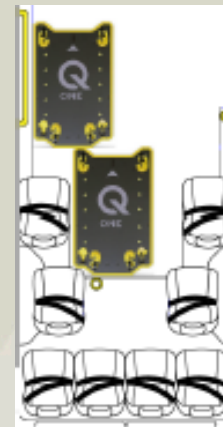
- All-in-one wheelchair securement station
- Fully secure wheelchair in under a minute
- Easy & intuitive - easy to reach hook ups
- Simple color & numbering sequencing, visual indicators, pre-positioned belt, and push-button operation
- Overall dimensions - width 30", height 1.41", length 48"
- Q'Straint One is fully crash tested and meets all current ADA requirements, including RESNA WC-4, Section 18; WC18, WC19, and 150-1054-1

Q'Straint InQline Assist

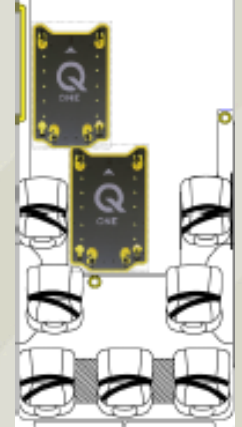
- Controlled steering - provides operators full control of the passenger boarding and deboarding process
- Reduces driver injury and operator liability
- Increased loading capacity
- Safety stop
- Enhanced rider experience
- Automatic winch system

Trans/Air AC System

- Specifically designed for Ram ProMaster
- Stand alone system
- Total cooling capacity - 50,000 BTU



17" Wide Seats



19" Wide Seats

Freedman Seating Upgrades

- Armrest
- Additional seat bottom cushion
- Stainless steel grab handles
- Level 5 vinyl - Docket 90 gray
- Seat Link
 - Seat sensors track occupancy and belt status, and wirelessly communicate to the driver
 - A head unit displays seat status of all passenger seats, records and stores data in case of an event

Q'Straint Omni Floor

- Interlocking aluminum planks
- Ultra-durable and corrosion resistant
- Change your layout
- Light and strong
- A smart investment



braunability.com/commercial

800.488.0359





Class P Standard Build Options

1	Ram Pro Master 3500 Van Ext. Cargo Van 159" WB Lowered floor side entry conversion-bus door style
*	<i>Gerflor Flooring or equal approved</i>
*	<i>Panels for Walls: ABS Interior wall, ABS ceiling Insulation for walls</i>
*	<i>Set of Q'Straint with L Track - QRT 360</i>
*	<i>Air Conditioner: Rear AC and Rear Heat</i>
*	<i>New Exhaust System</i>
*	<i>2 - Passenger Freedman Seats, 3pt (on back-level 4 vinyl) curbside</i>
*	<i>2 - Passenger Freedman Seats, 3 pt (on back-level 4 vinyl) streetside</i>
*	<i>2 per van / 1 Passenger rigid seats (level 4 vinyl) curbside</i>
*	<i>2 per van / 1 Passenger rigid seat (level 4 vinyl) streetside</i>
*	<i>Safety Kit (first aid kit, fire extinguisher, triangles)</i>
*	<i>Back up alarm-Interlock System</i>
*	<i>LED strip lighting</i>
*	<i>Emergency window</i>
*	<i>Kit stowage Assy-Q5-8525-SC</i>
*	<i>Driver & Passenger side step</i>
*	<i>Handrails-& Decals</i>
*	<i>36" A&M Systems Power Door</i>
*	<i>Fast Idle *required*</i>
*	<i>Amber LED light</i>
QTY	OPTION DESCRIPTION
1	12" belt extender
1	Qstraint 20" belt extender
4	14" webbing loops
1	Belt web cutter
1	Dash Warning Light
1	TA45LPSC2SLP Super 10
*	10 unit first aid kit
*	Blood pathogen kit
*	2.5 4 BC fire extinguisher
*	Reflective triangles

SUMMARY OF STANDARD WARRANTIES

(Provide complete warranty information and parchment with proposal)

Warranty	Miles	Years
Body Structure	36,000	3 years
Chassis	36,000	3 years
Engine	60,000	5 years
Transmission	60,000	5 years
Air conditioner	Unlimited	3 years
Lift/Ramp	Unlimited	5 years
EV Battery	N/A	N/A
EV Conversion/Installation	N/A	N/A
CNG Warranty (Install and tanks)	N/A	N/A