



SOUTH ELEVATION



WEST ELEVATION



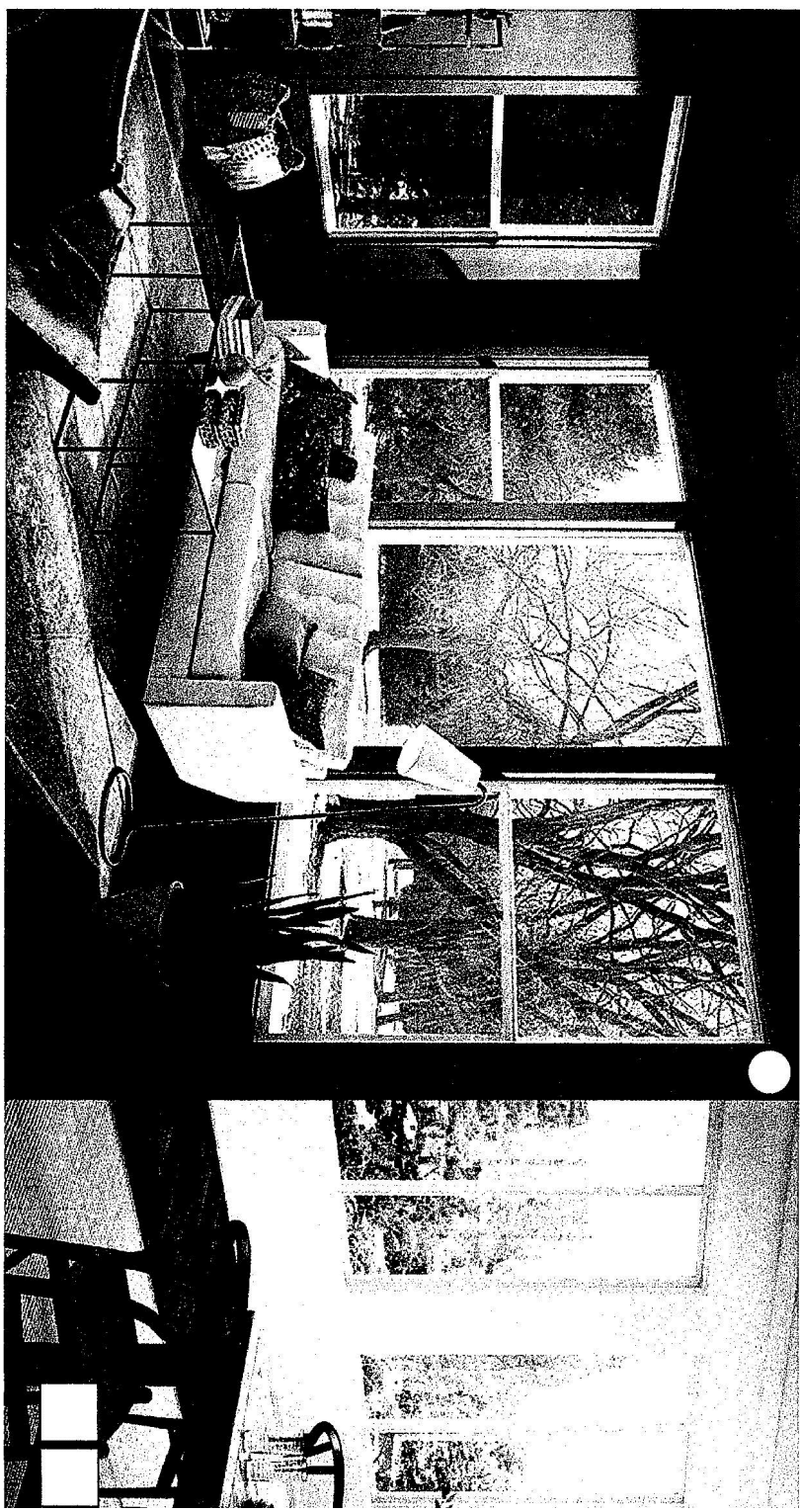
NORTH ELEVATION



EAST ELEVATION

MILGARD

WINDOWS AND DOORS



V300 Trinsic™ Series

V300 Windows \$35 \*\*\*\*\* 64" (10x5)

A contemporary vinyl window with an expansive viewable glass area and a narrow frame to help you embrace modern home design. With its aesthetic and functional options, the V300 Series window has a operating style you'll love.

See us at a Builders

EXTERIOR COLORS | INTERIOR COLORS

HORIZONTAL SLIDER

SINGLE-HUNG

CASHEMENT

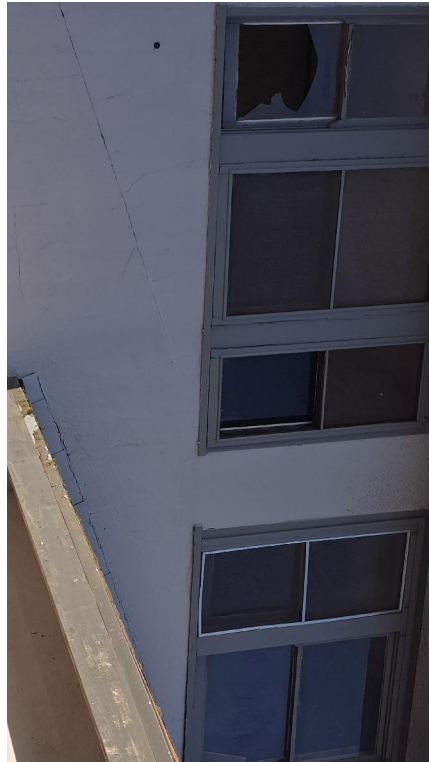
AWNING

V300 Windows & Doors

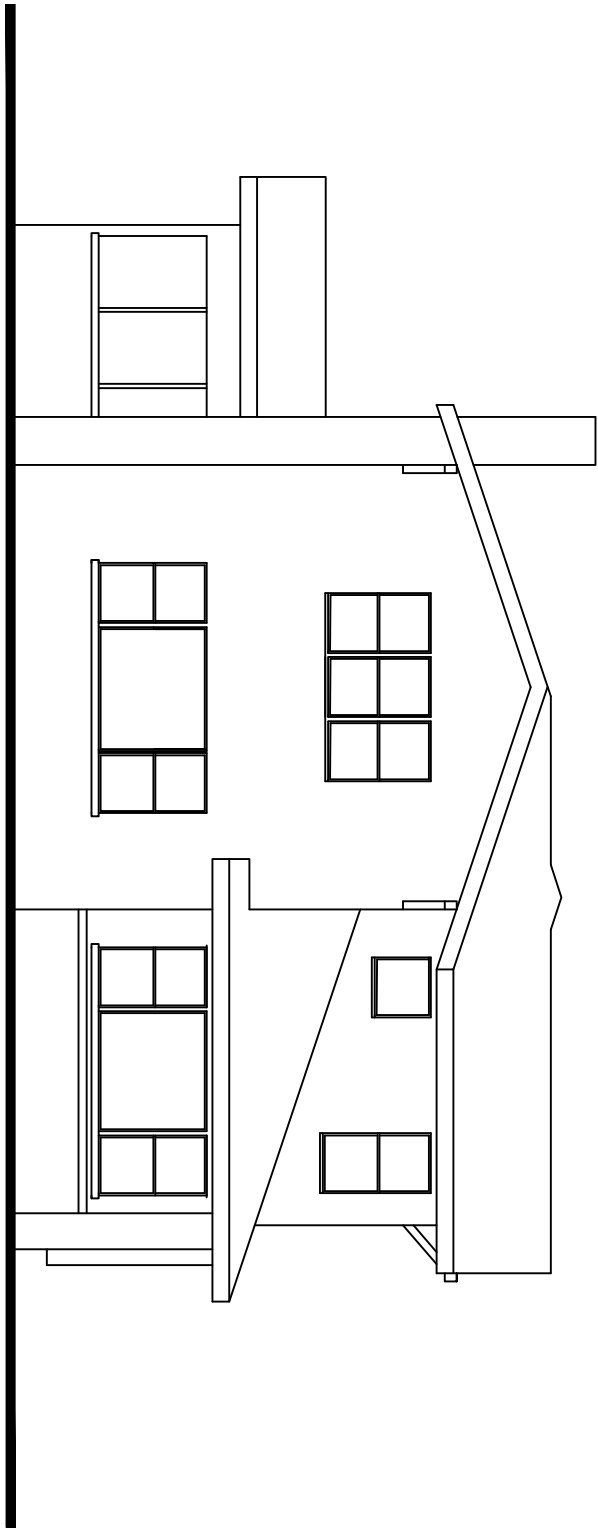
This website uses cookies to enhance user experience and to analyze performance and traffic on our website. We also share information about your use of our site with our social media, advertising and analytics partners.

Do Not Sell My Personal Information

Privacy Cookies



EXISTING WINDOWS



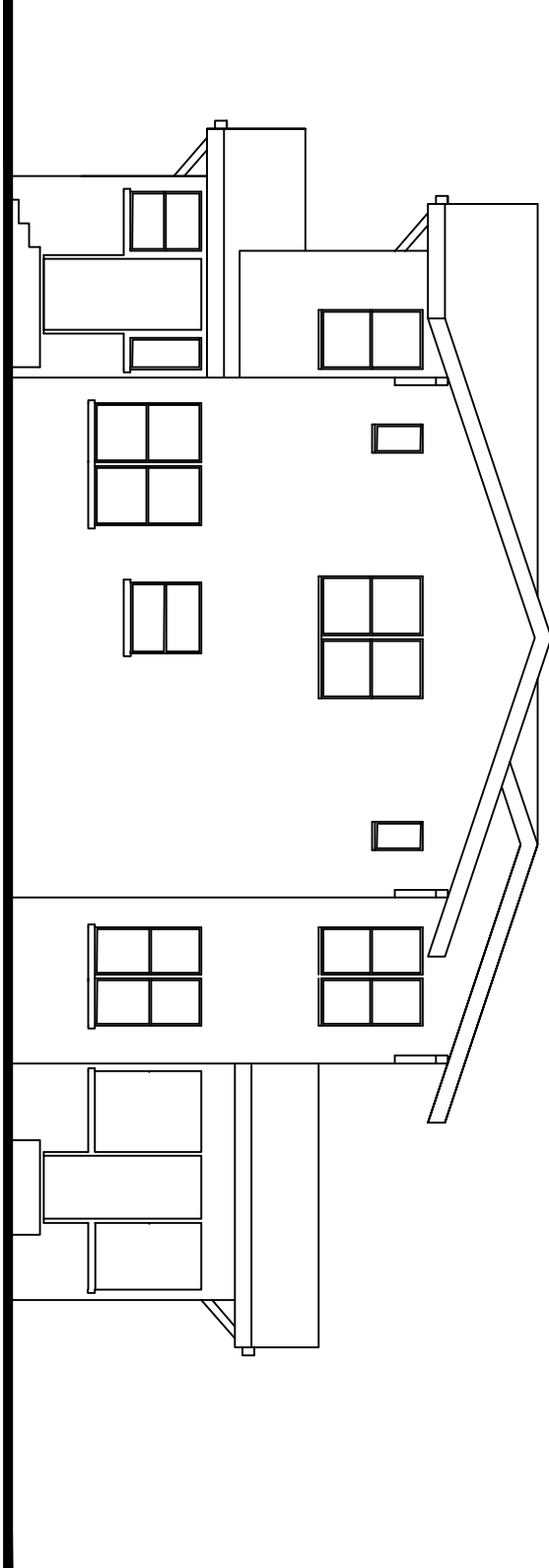
WEST ELEVATION

Scale: 1/8" = 1'-0"



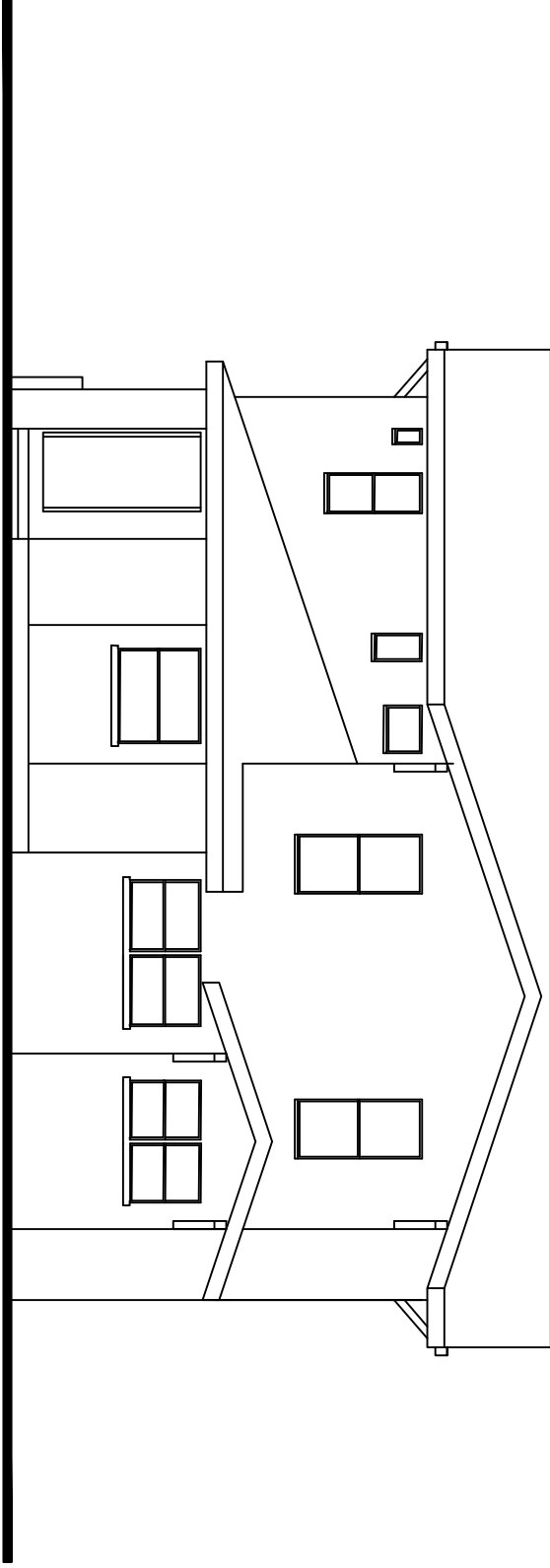
NORTH ELEVATION

Scale: 1/8" = 1'-0"



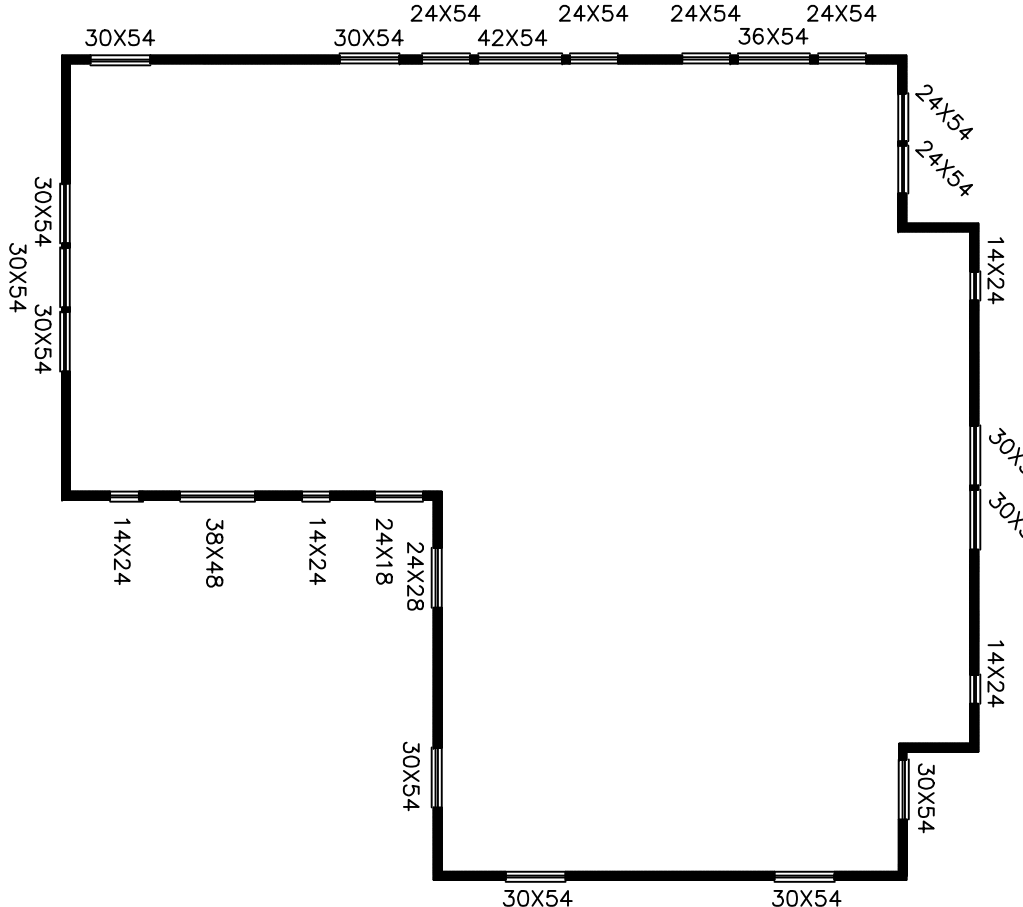
EAST ELEVATION

Scale: 1/8" = 1'-0"



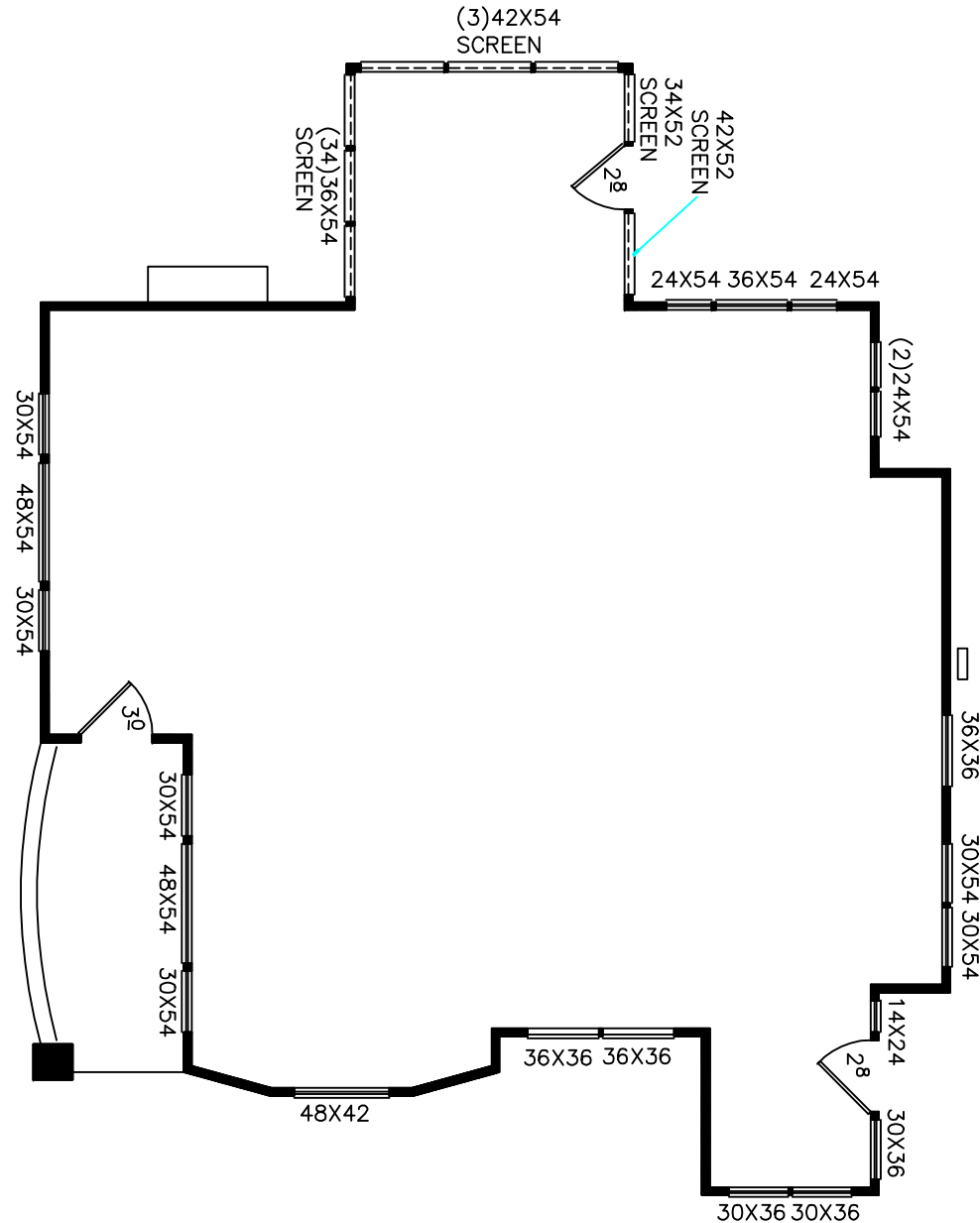
SOUTH ELEVATION

Scale: 1/8" = 1'-0"



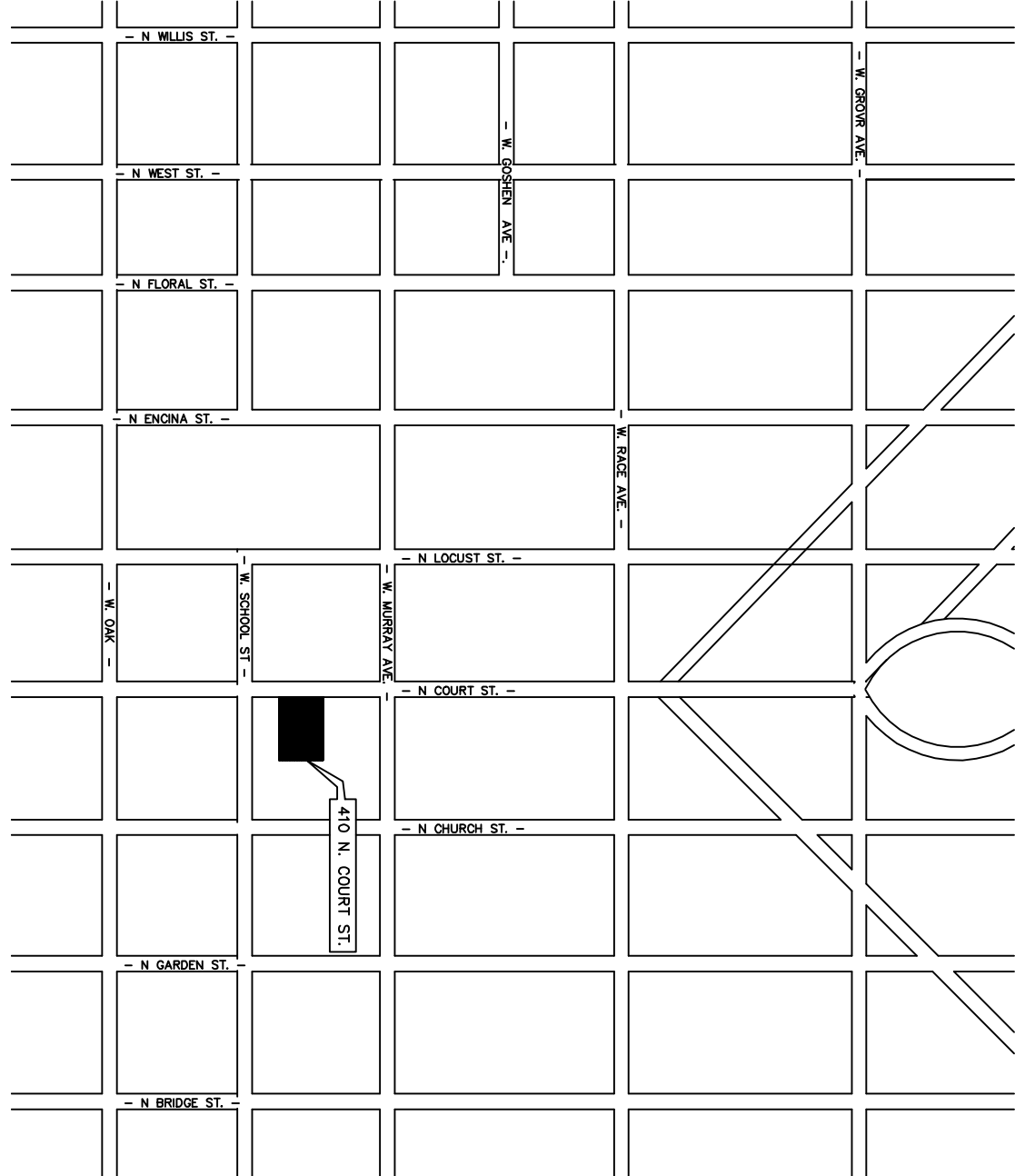
SECOND FLOOR PLAN

Scale: 1/4" = 1'-0"



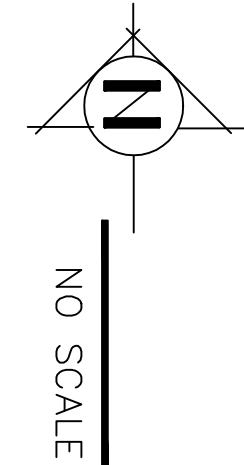
FIRST FLOOR PLAN

Scale: 1/8" = 1'-0"



VICINITY MAP

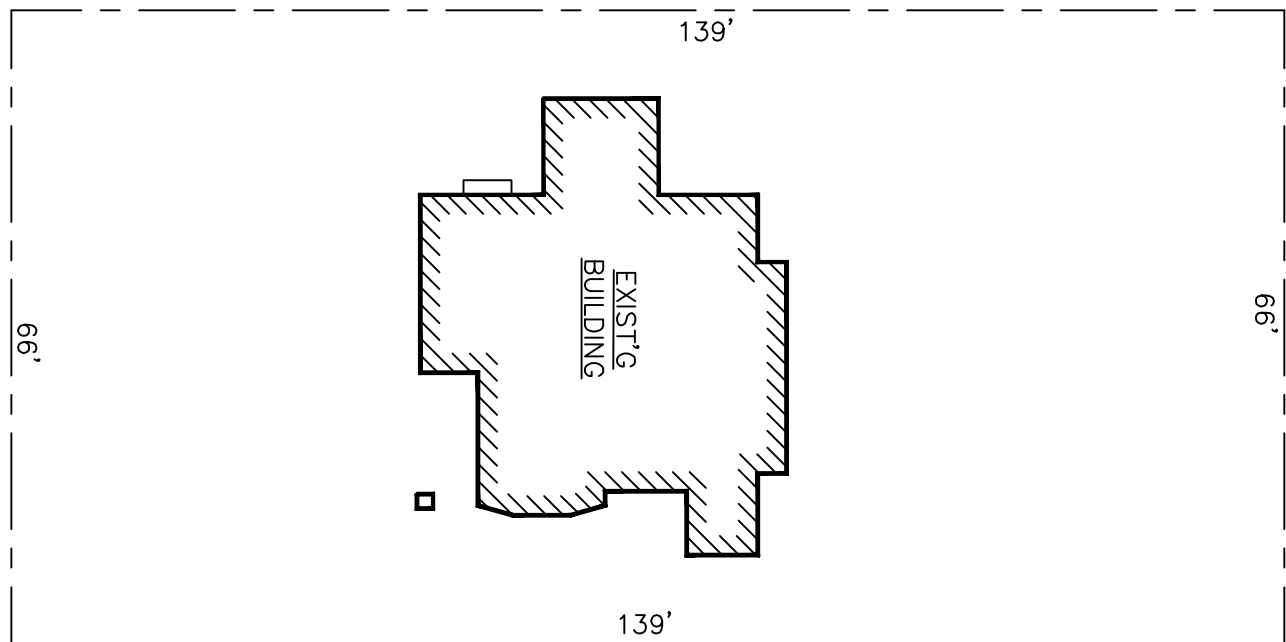
410 N. COURT ST.  
APN: 094-271-006



NO SCALE

NOTE:

- RETROFIT WINDOWS TO BE FIT TO EXISTING OPENINGS 48 WINDOWS .
- WINDOWS TO BE "MILGARD" V300 TRINISTIC EXTERIOR WHITE/INTERIOR WHITE NO FIN W/ SLOPED STILL ADAPTER 1/8" SUN COATMAX (LOWE) OVER 1/8" CLEAR GRAY EDGE GUARDMAX SPACER STANDARD SCREEN W/ FIBERGLAS MESH U--28SMGC .20 VT.48 STC 30, DTC 25, PG: LC-PG30
- EXISTING TRIM TO REMAIN.
- EXISTING STUCCO FINISH TO REMAIN.
- ALL EXTERIOR TREATMENTS TO REMAIN AS IS.



SITE PLAN

410 N. COURT ST.  
APN: 094-271-006

Scale: 1"=20'-0"

WINDOW REPLACEMENTS FOR:

FISTOLERA CONSTRUCTION

410 N. COURT ST. VISALIA, CA.

STEPHEN O. SPARSHOTT

DESIGN & DRAFTING  
1206 W. EVANS  
VISALIA, CA. 93277  
559-679-7565

SHEET

OF

UPDATE SUBMIT 4-1-25



# EXHIBIT B



FISTOLERA CONSTRUCTION INC

420 N. COURT ST, STE 200, VISALIA, CA. 93291

4/1/25

RE: 410 N Court St

To Whom it May Concern,

We are replacing all windows at the above-mentioned address, 410 N. Court St, Visalia, 93291. We are replacing these windows due to age, deterioration and to secure the building from the homeless who have been breaking into the property.

Sincerely,

Kevin Fistolera

Owner/Contractor

KF/sb

RE: FISTOLERA 410 N COURT ST



Sonya Beals <sonya@fistolera.com>

To ● Cristobal Carrillo; ○ Steve Sparshott

Cc ● Catalina Segovia

↩ Reply

↩ Reply All

→ Forward



Tue 04/01/2025 2:52 PM

ⓘ This sender sonya@fistolera.com is from outside your organization.

ⓘ You replied to this message on 04/01/2025 2:59 PM.

Hi Cristobal,

I just spoke with Kevin and he says we will rebuild the wooden screens.

*Sonya Beals  
Project Coordinator  
Fistolera Construction Inc.  
559-625-8372*