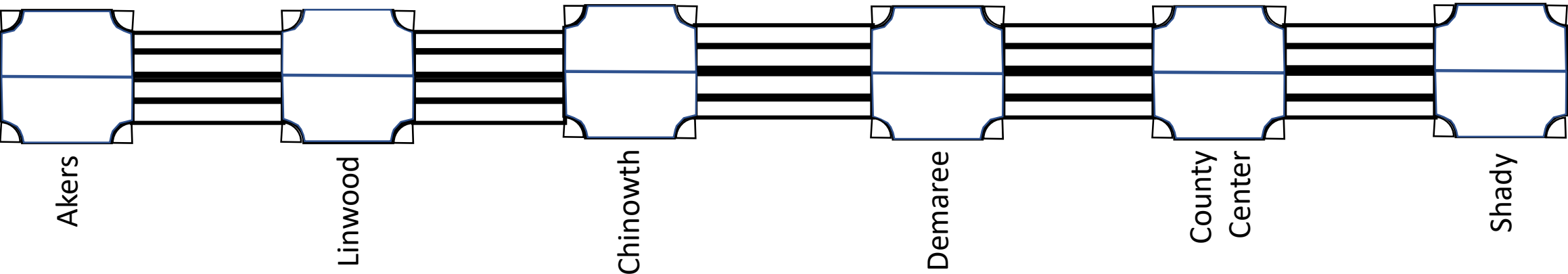
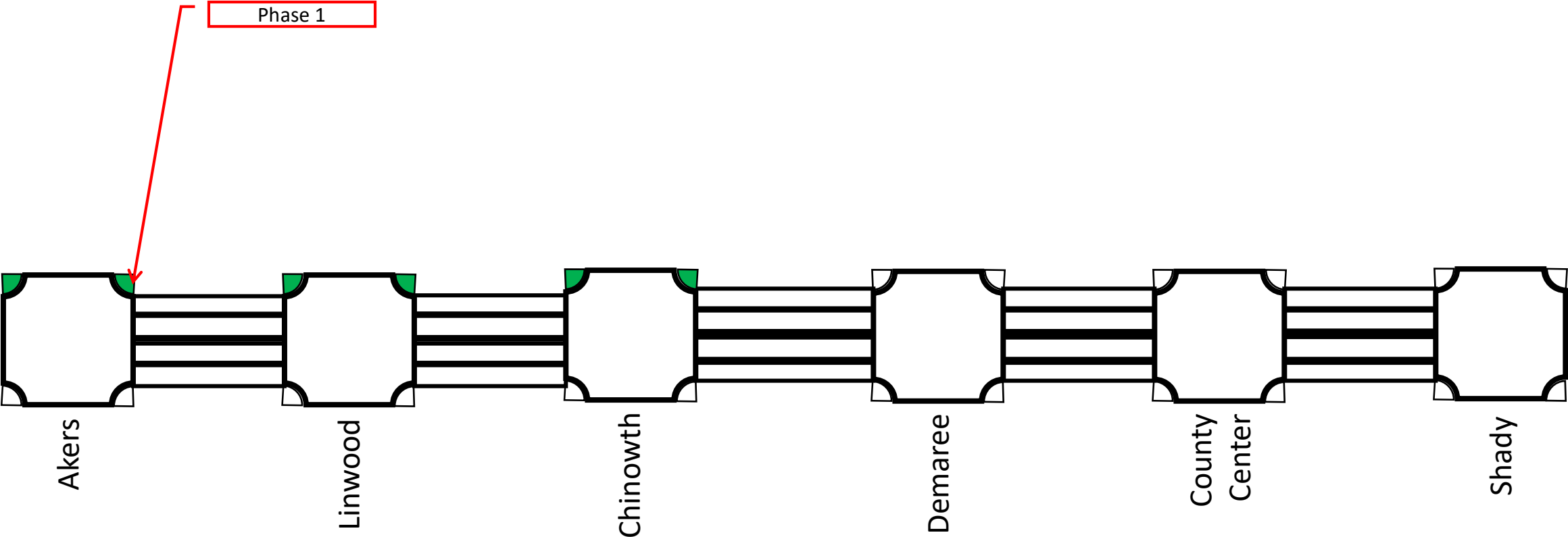


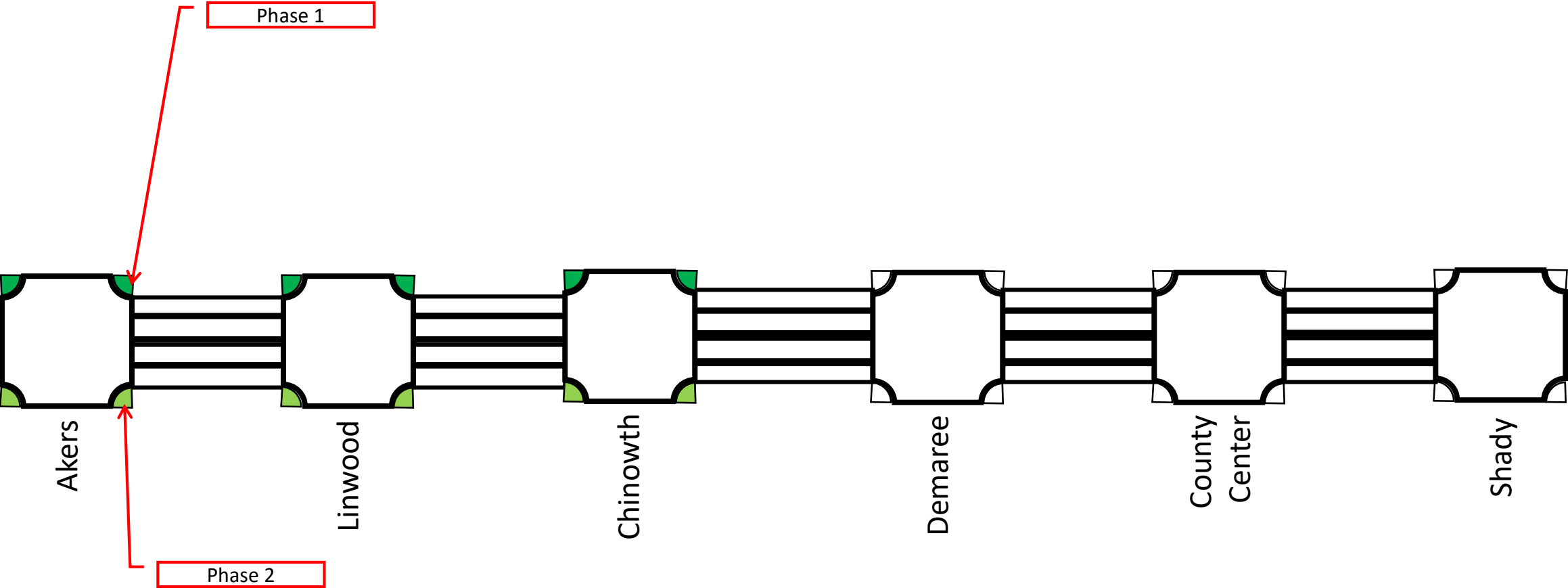
City Council Work Session: August 16<sup>th</sup>, 2021  
CP9485 Caldwell Ave Improvements: Akers St – Shady St  
Construction Phasing Concepts



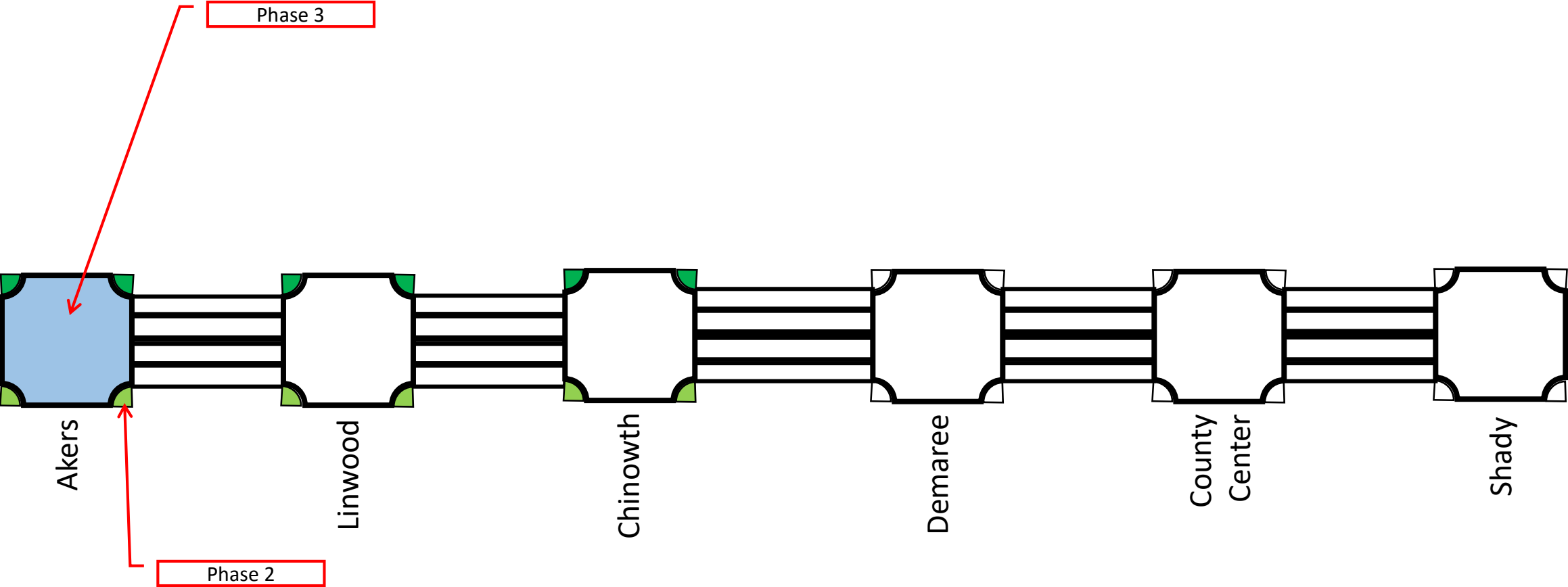
Phasing Concept



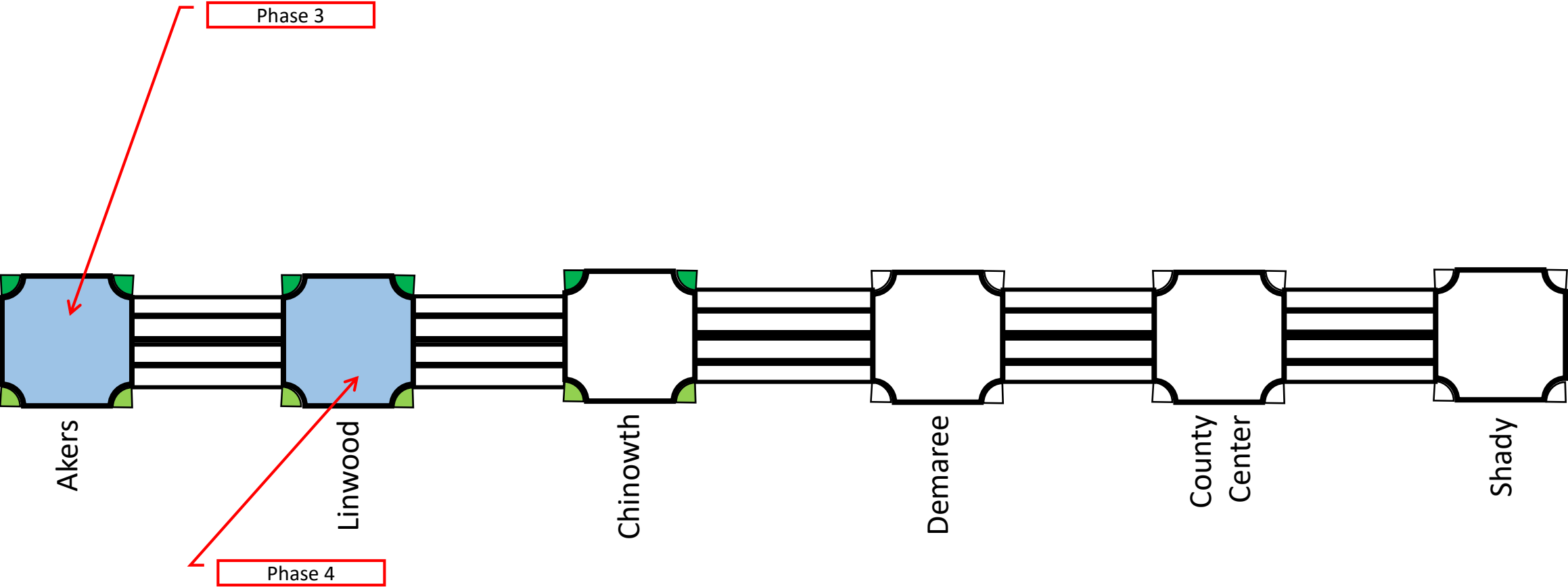
Phasing Concept



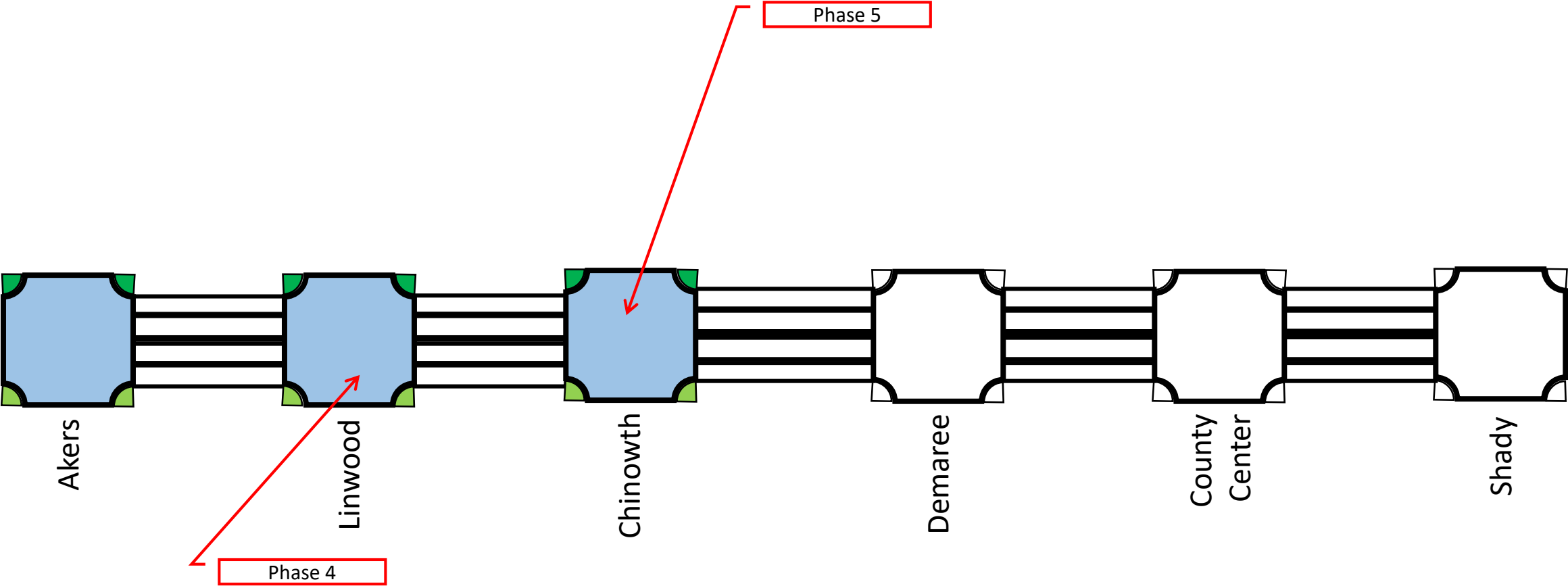
Phasing Concept



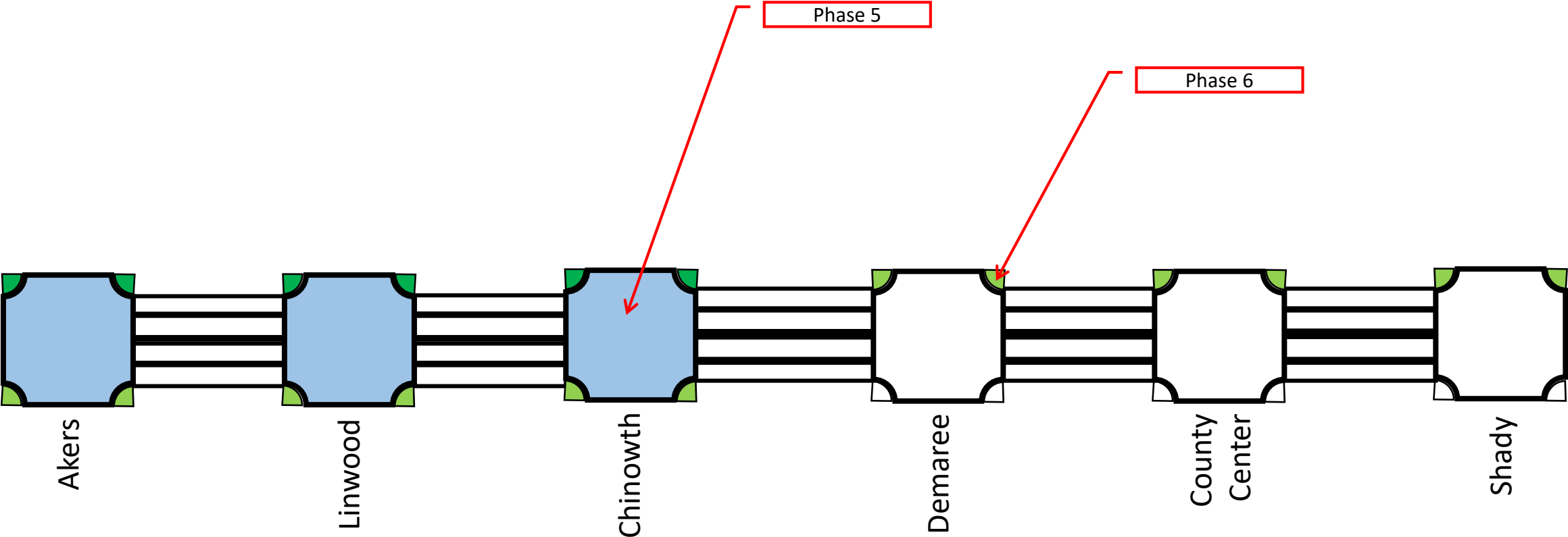
Phasing Concept



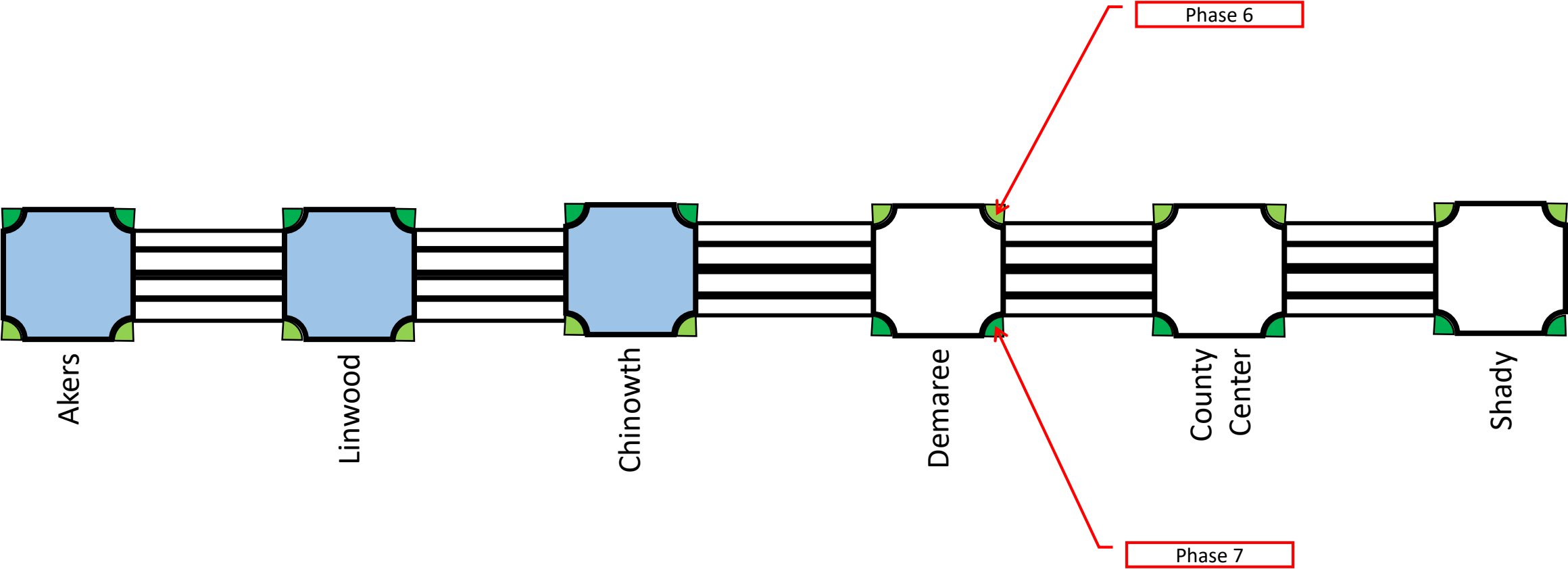
Phasing Concept



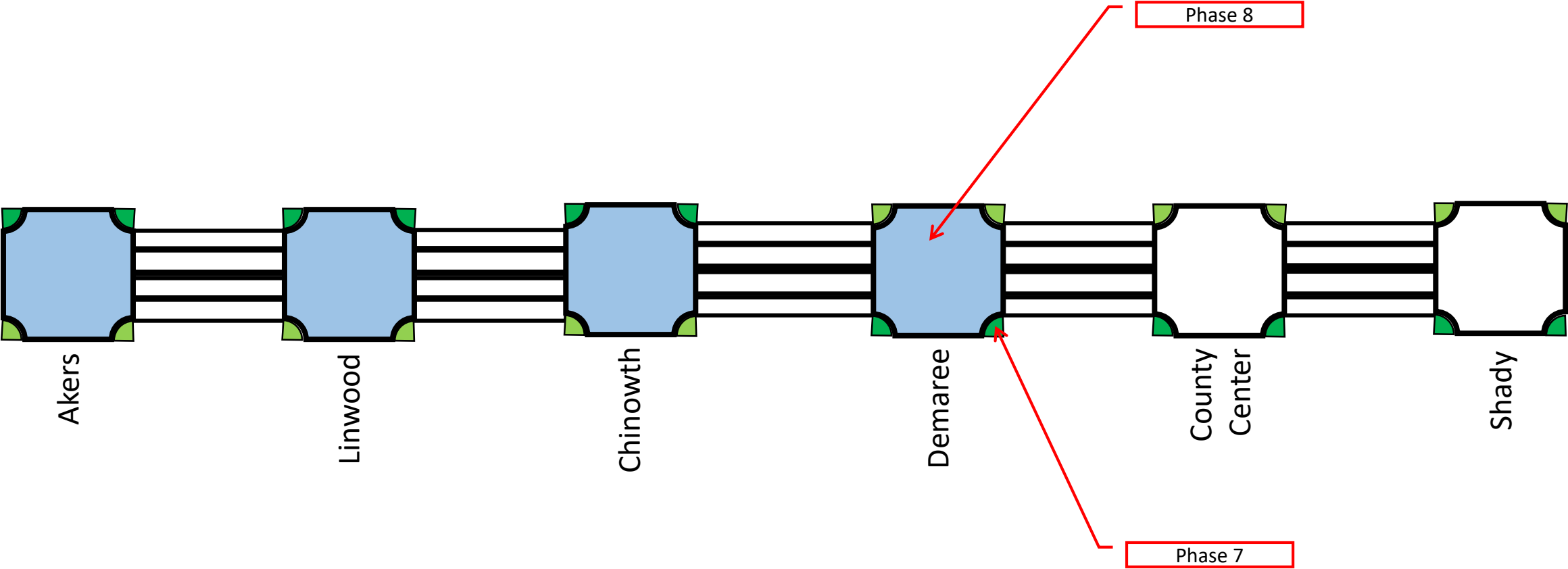
Phasing Concept



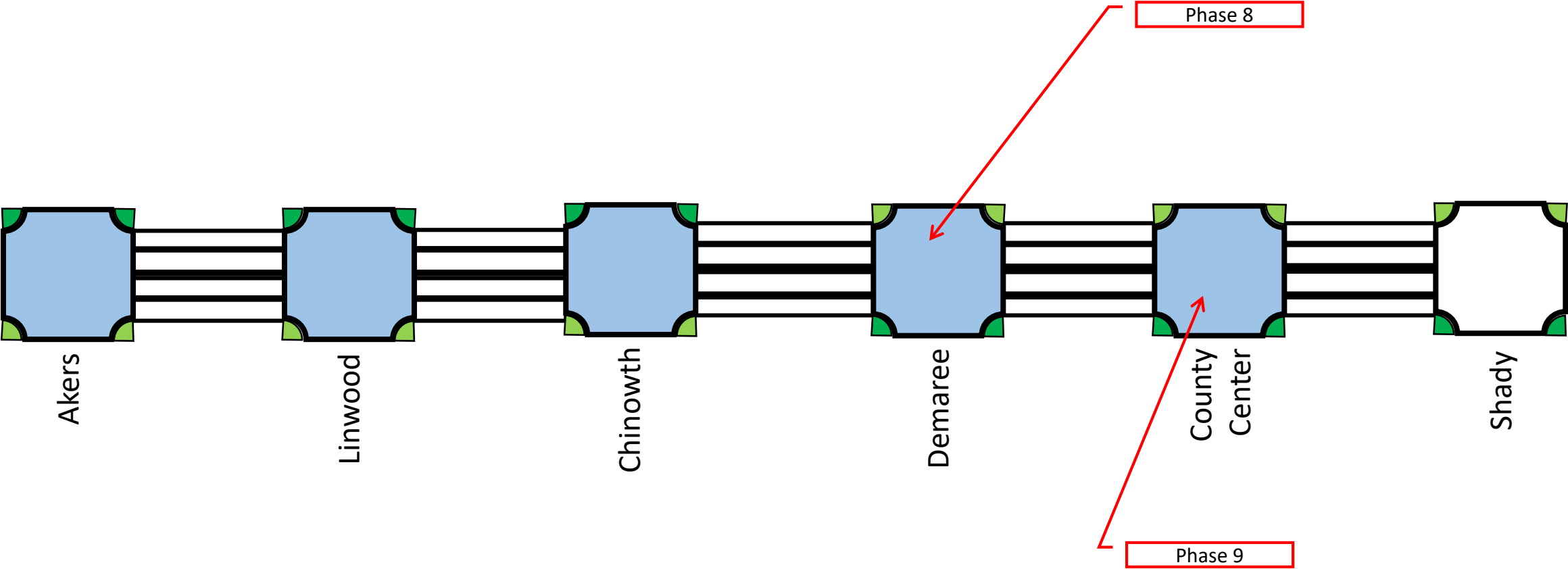
Phasing Concept



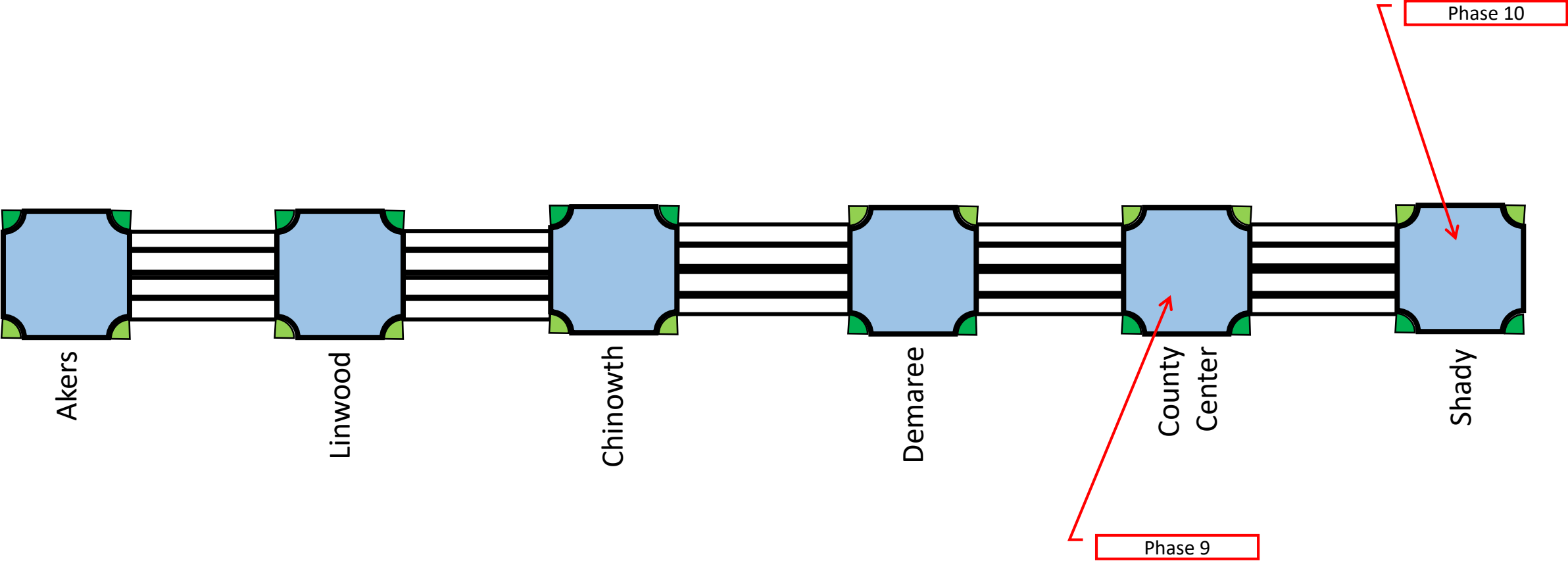
Phasing Concept



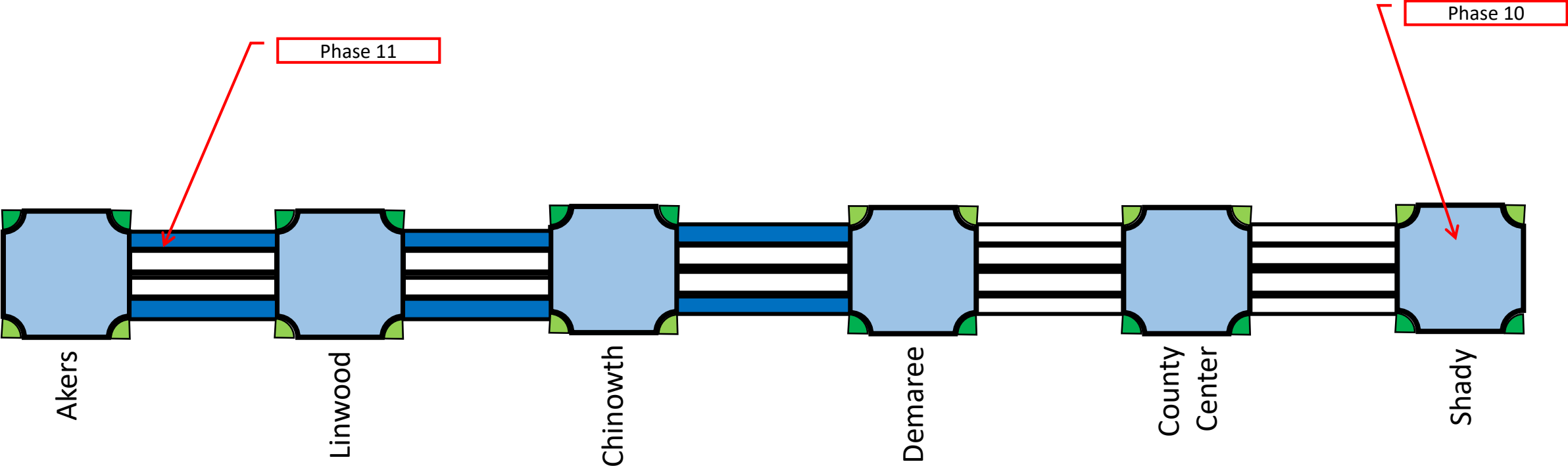
Phasing Concept



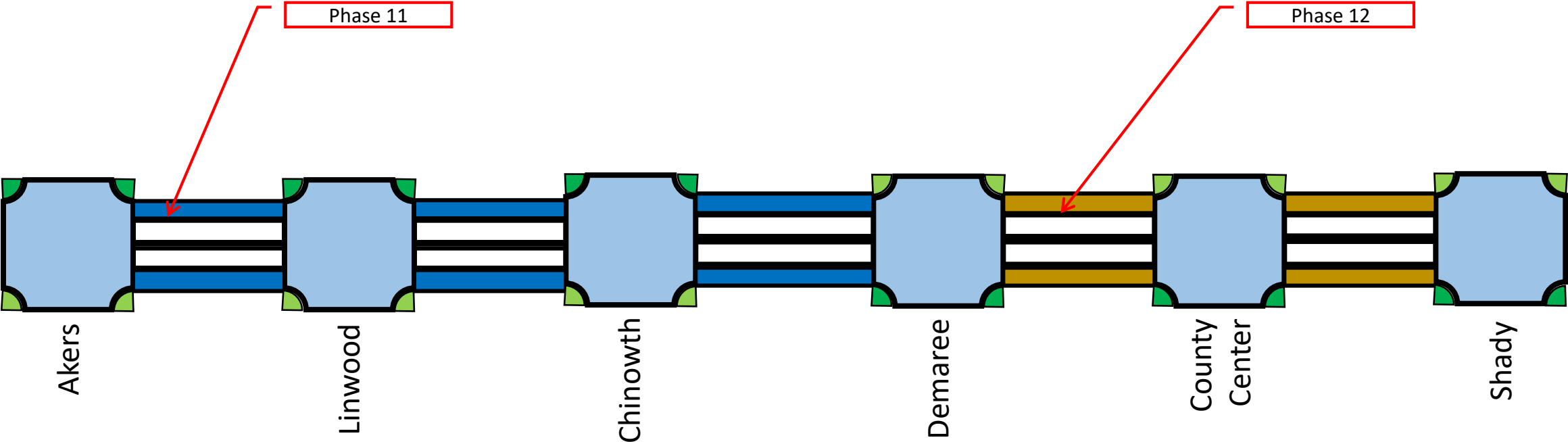
Phasing Concept



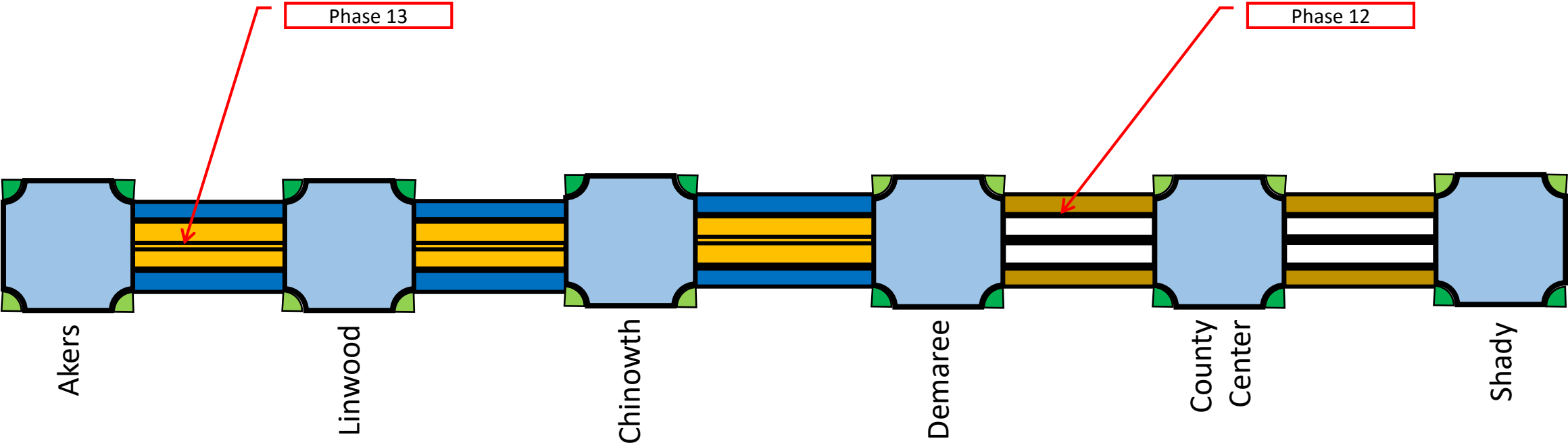
Phasing Concept



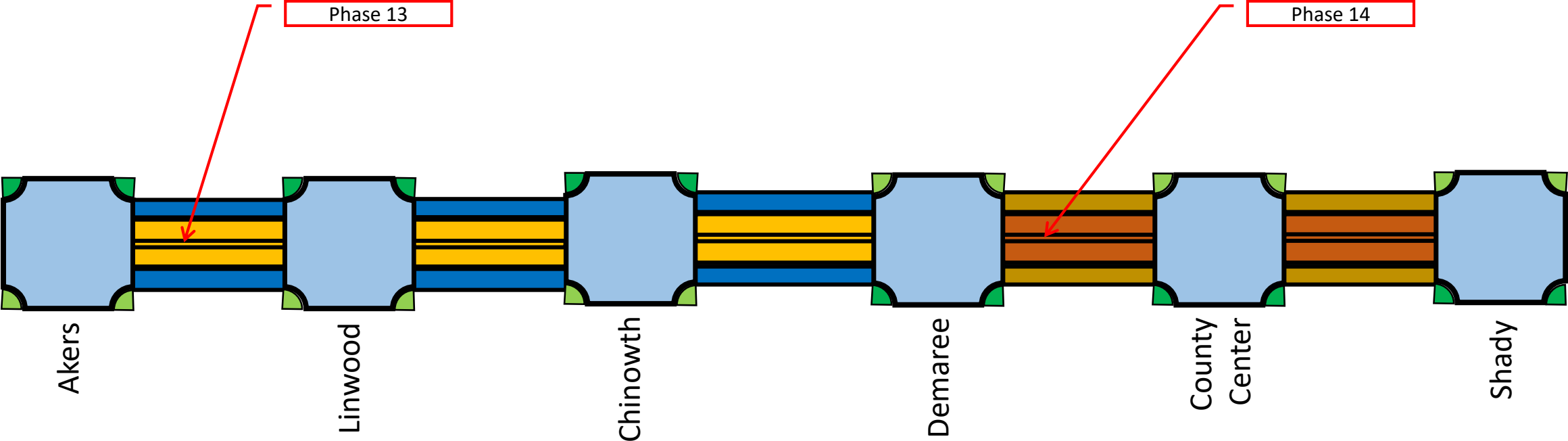
Phasing Concept



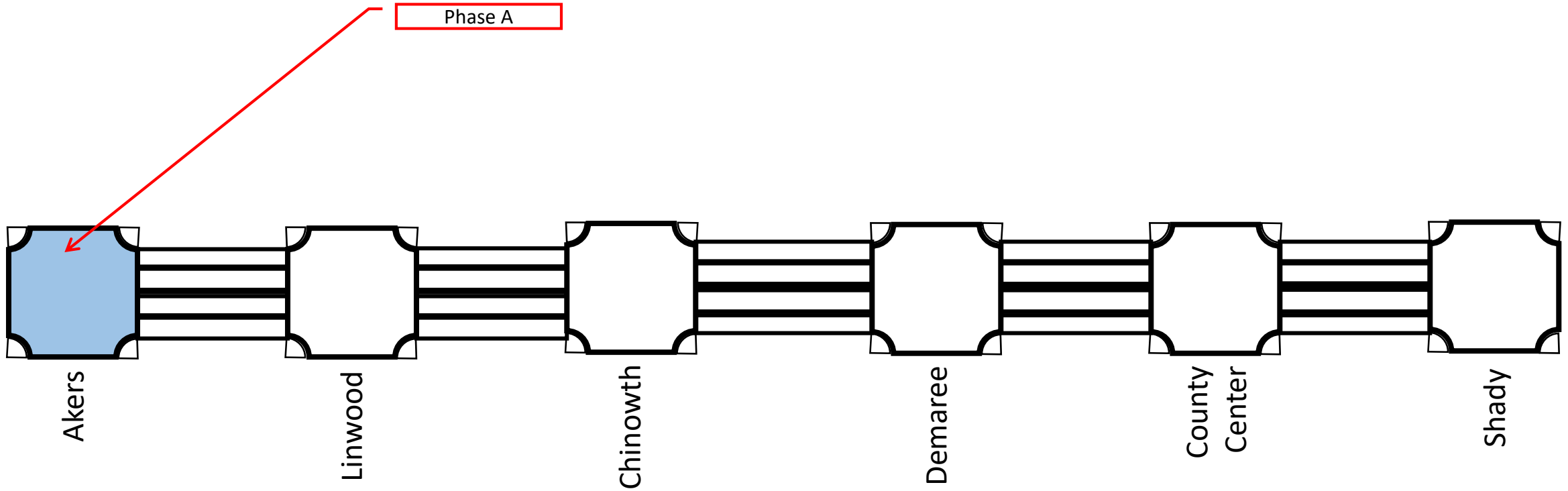
Phasing Concept



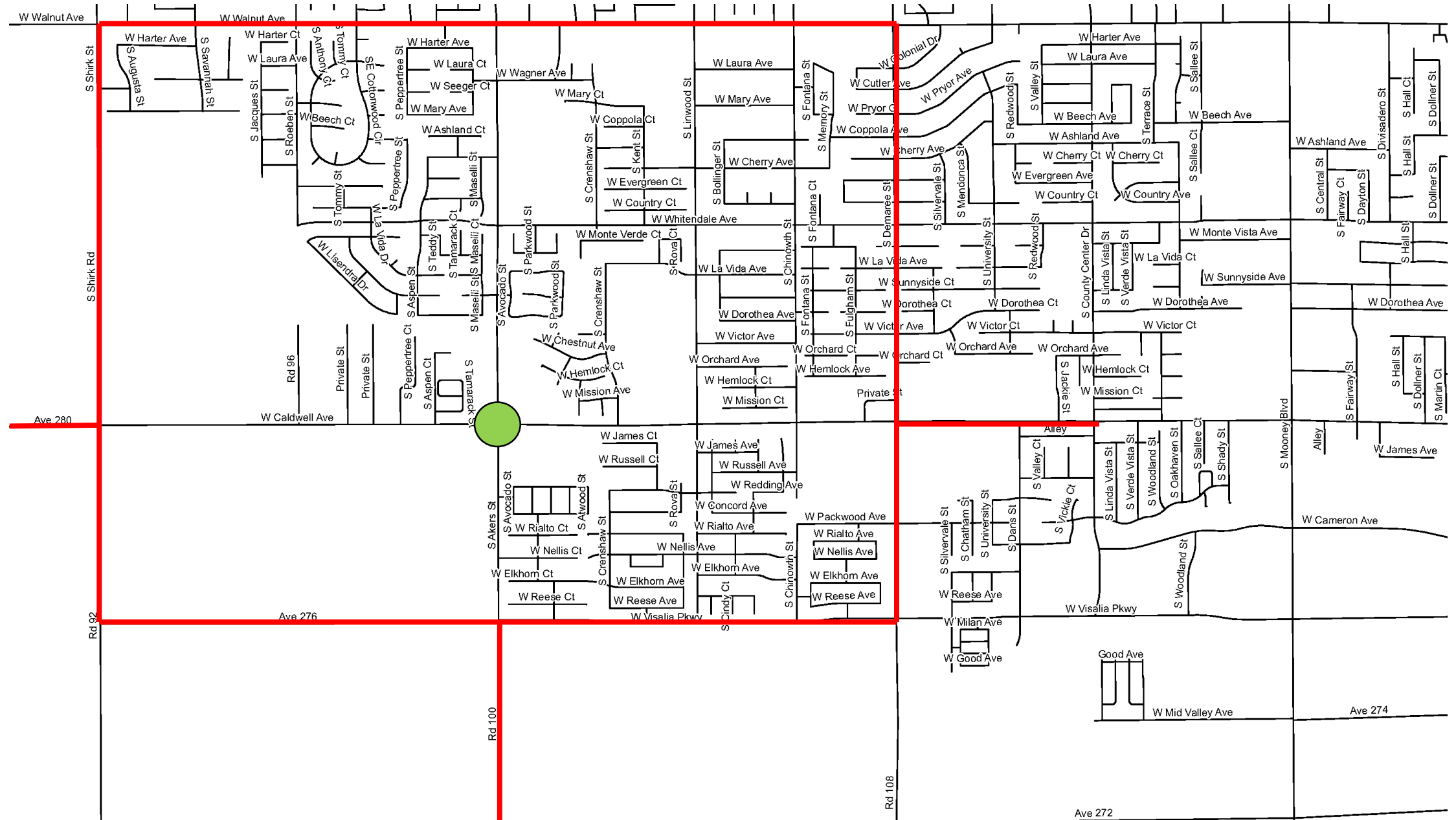
Phasing Concept



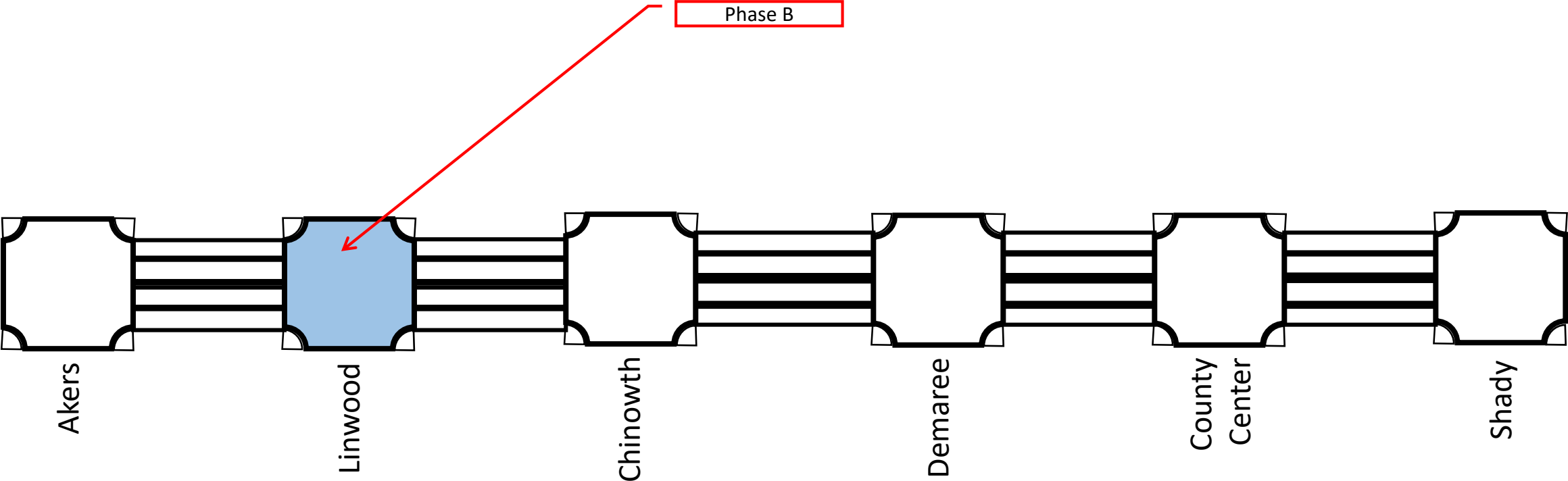
## Phasing Concept – Intersection Detours



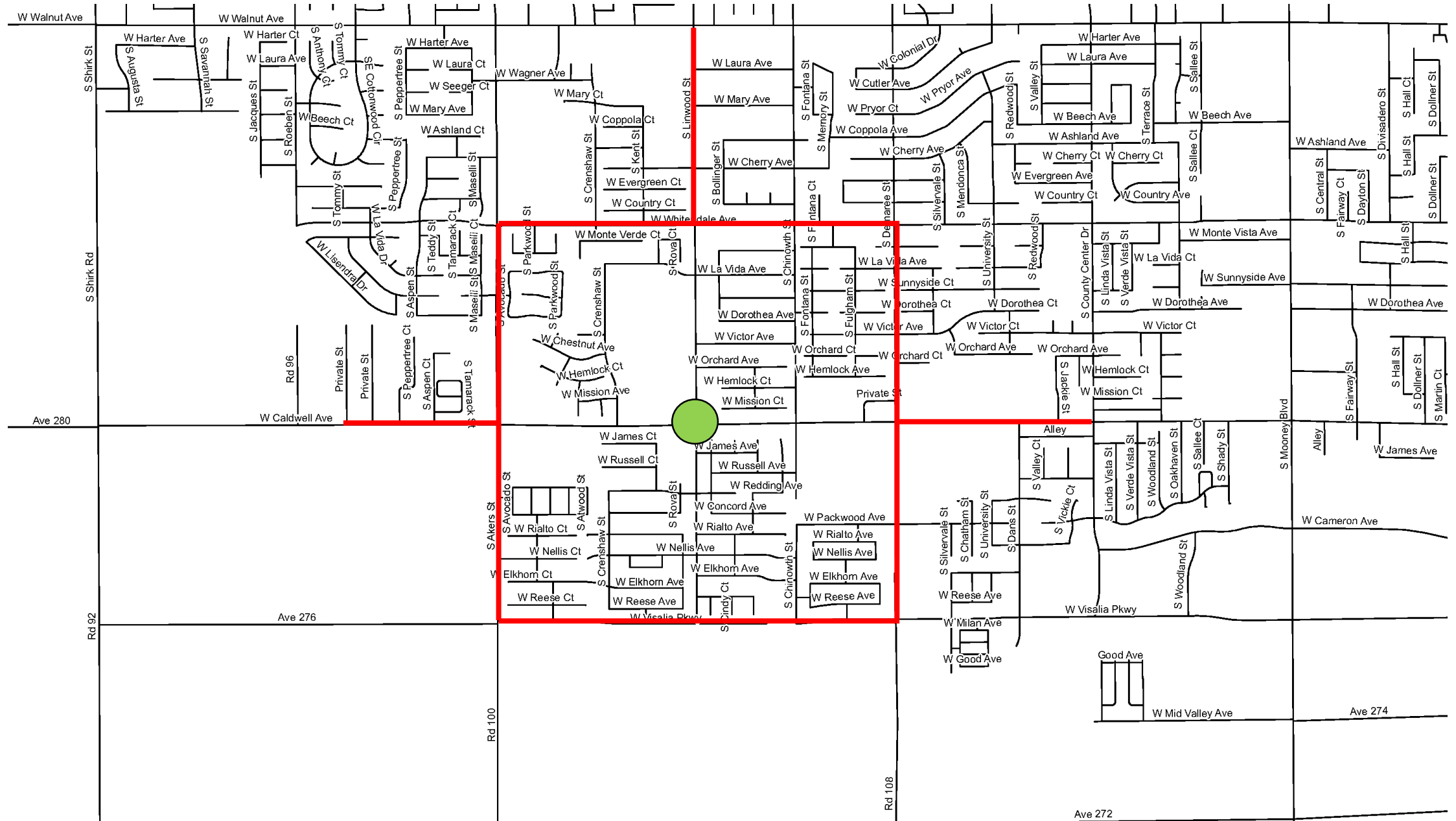
## Phase A Detour – Akers St



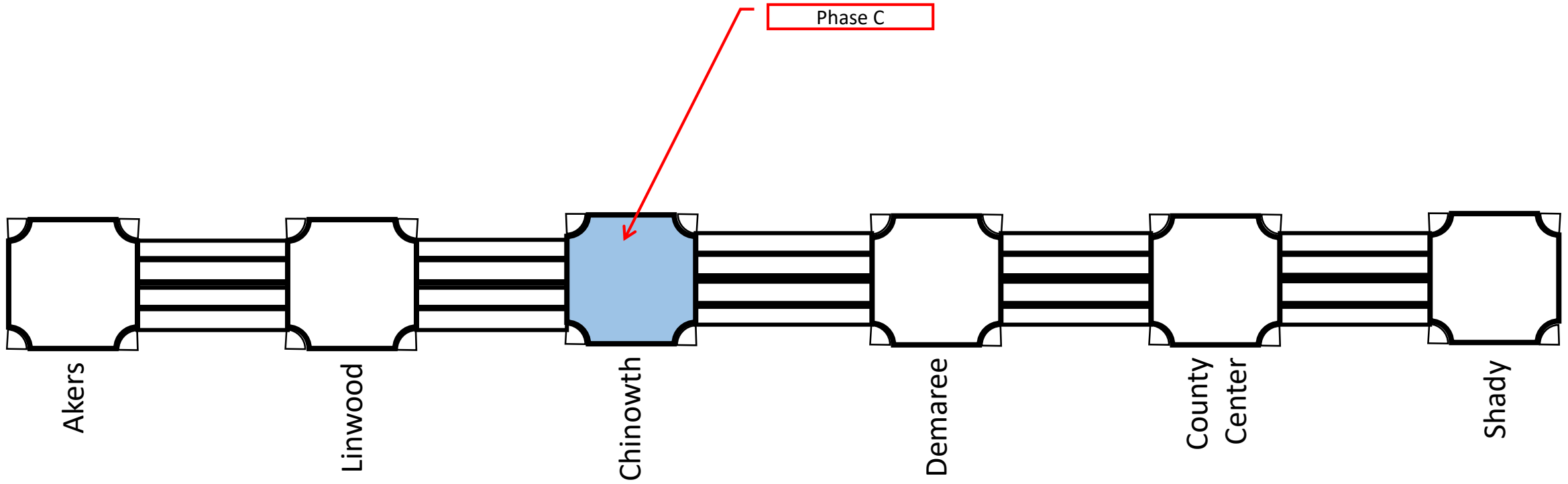
Phasing Concept – Intersection Detours



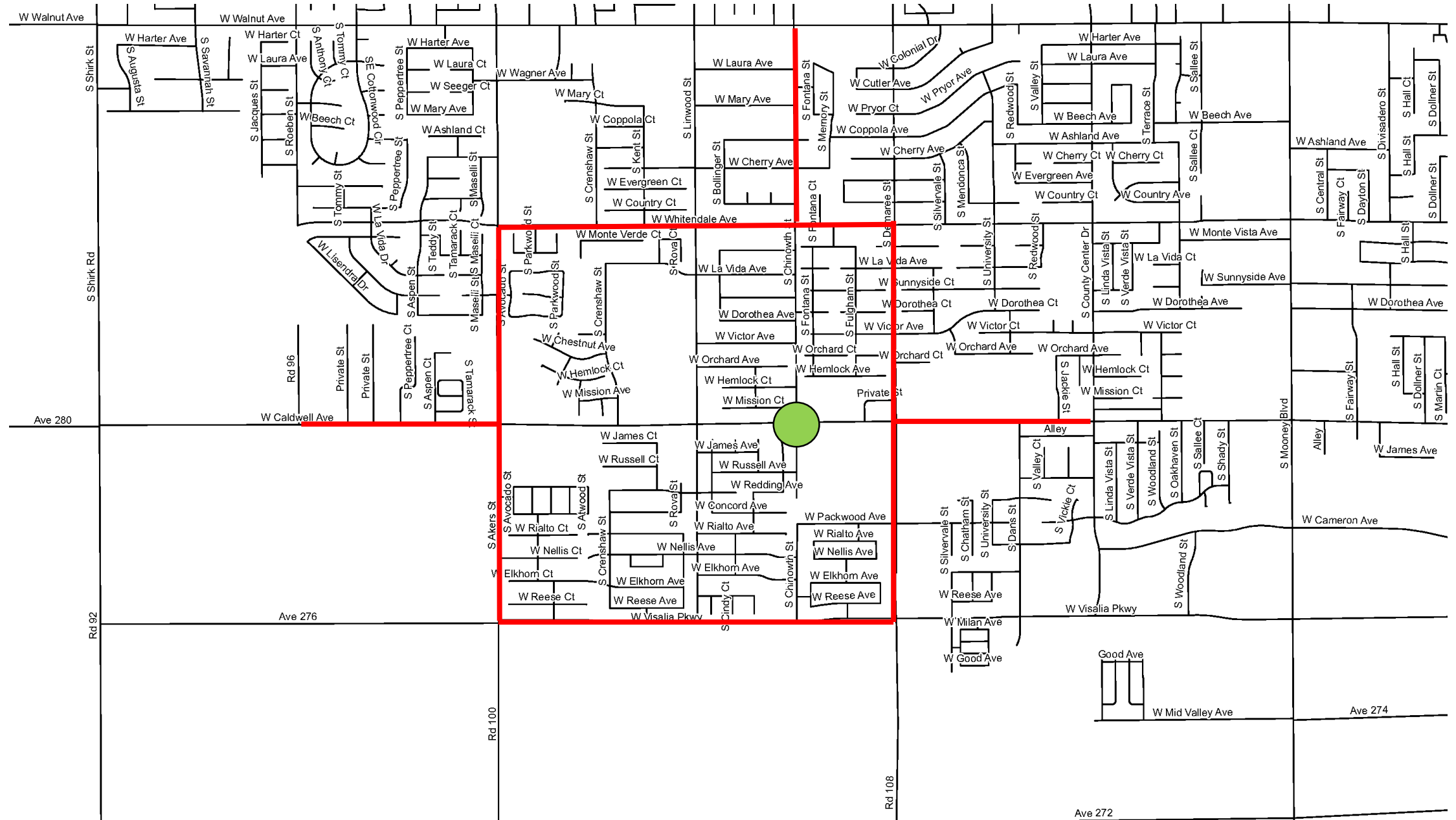
## Phase B Detour – Linwood St



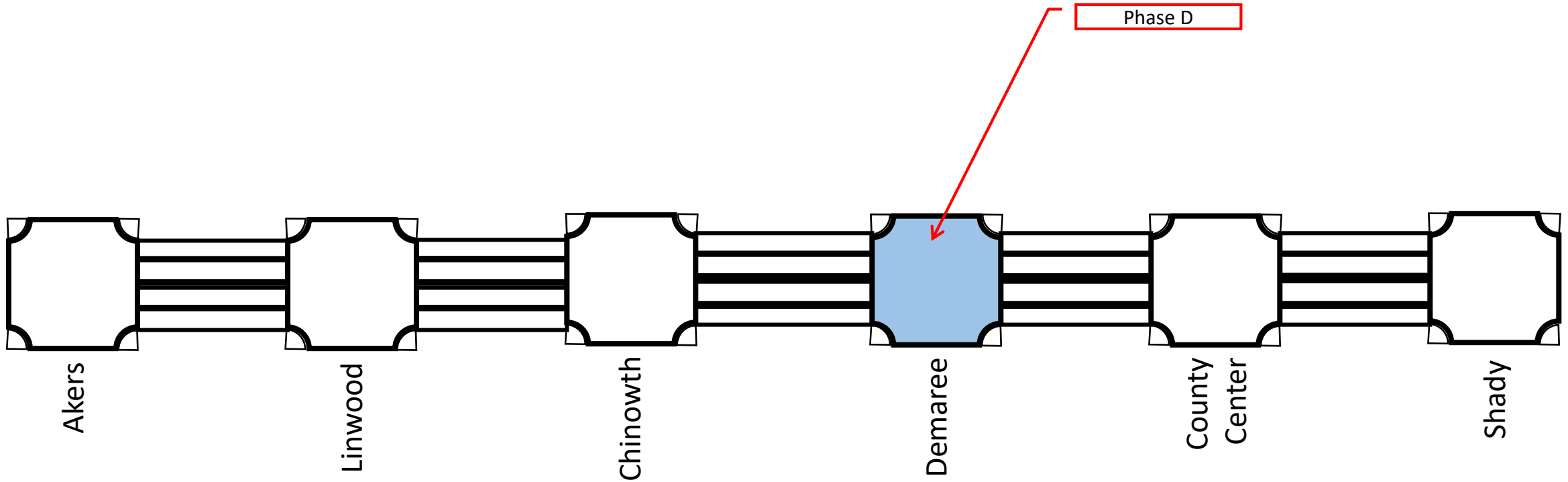
## Phasing Concept – Intersection Detours



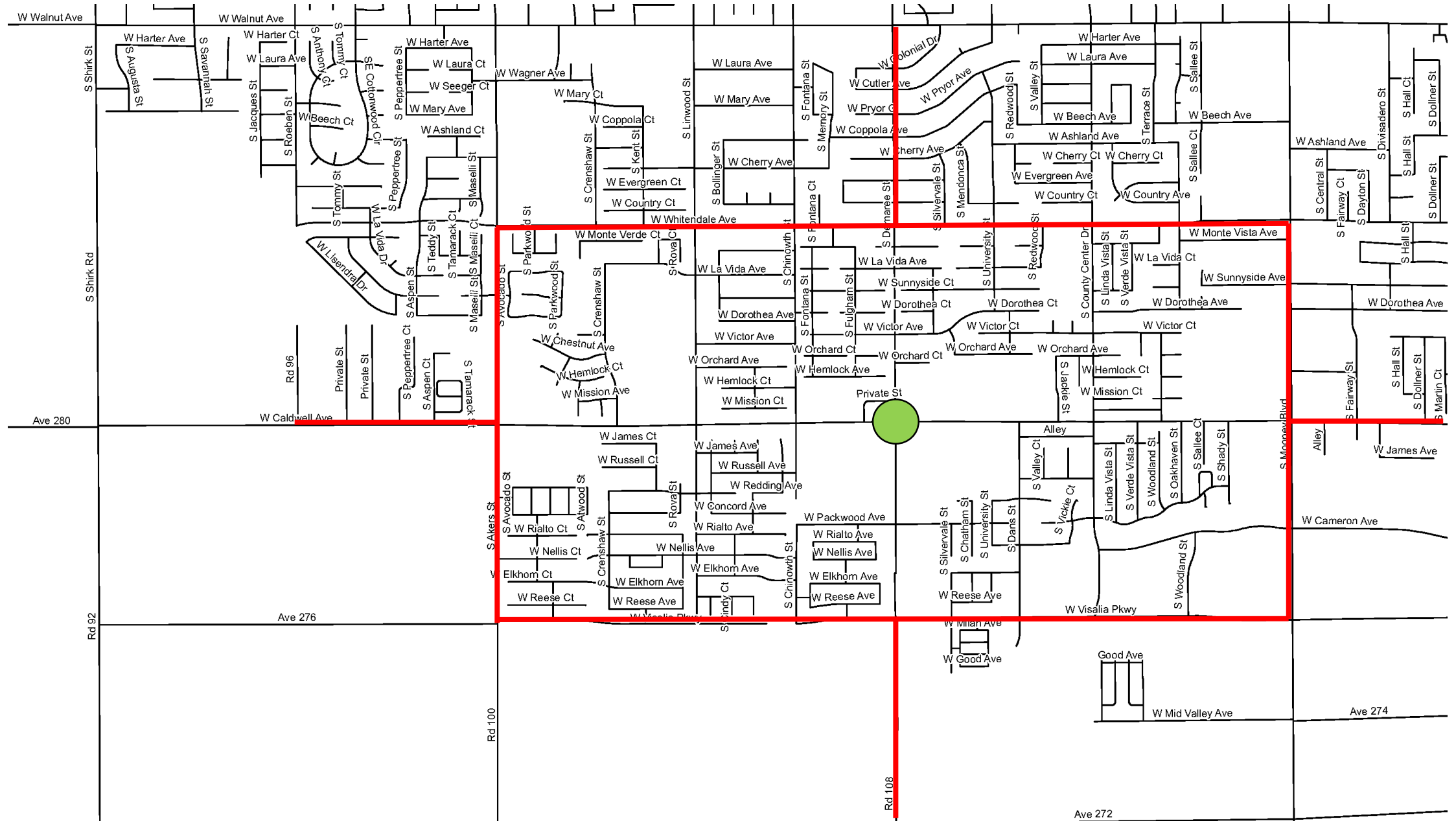
## Phase C Detour – Chinowth St



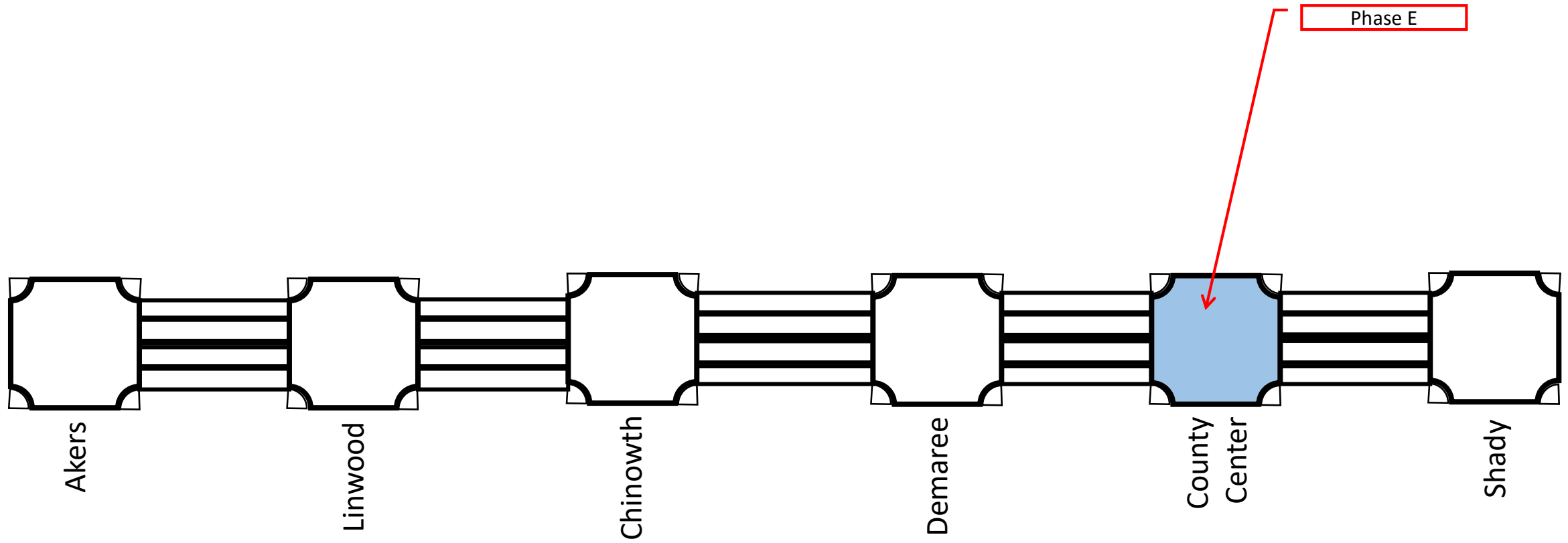
## Phasing Concept – Intersection Detours



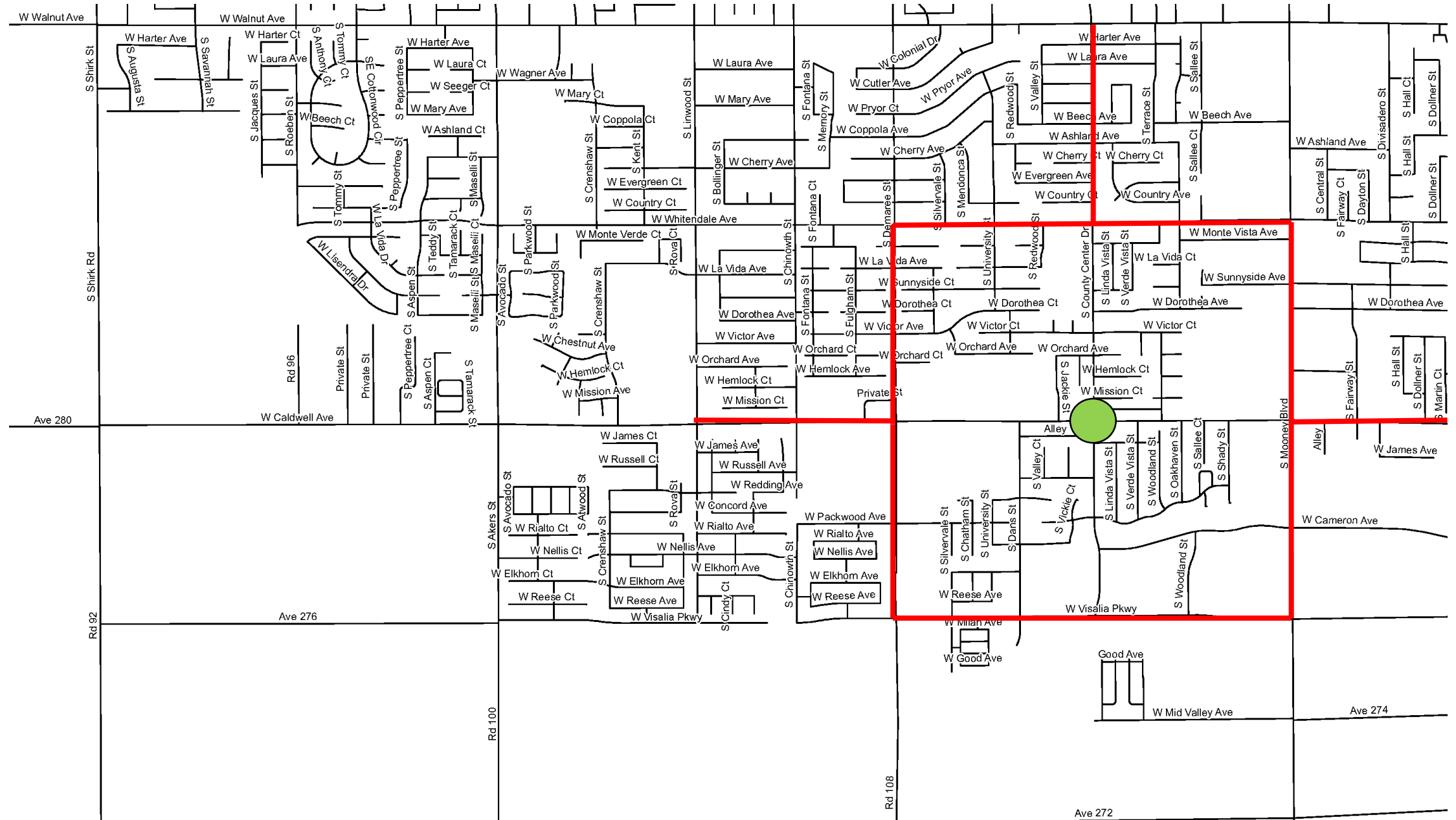
## Phase D Detour – Demaree St



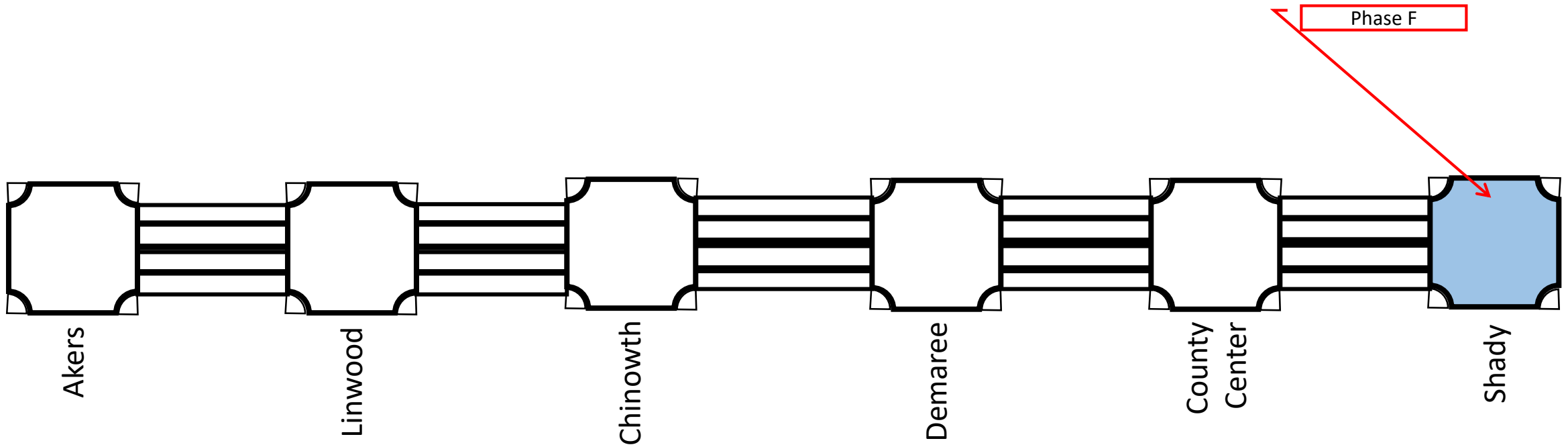
## Phasing Concept – Intersection Detours



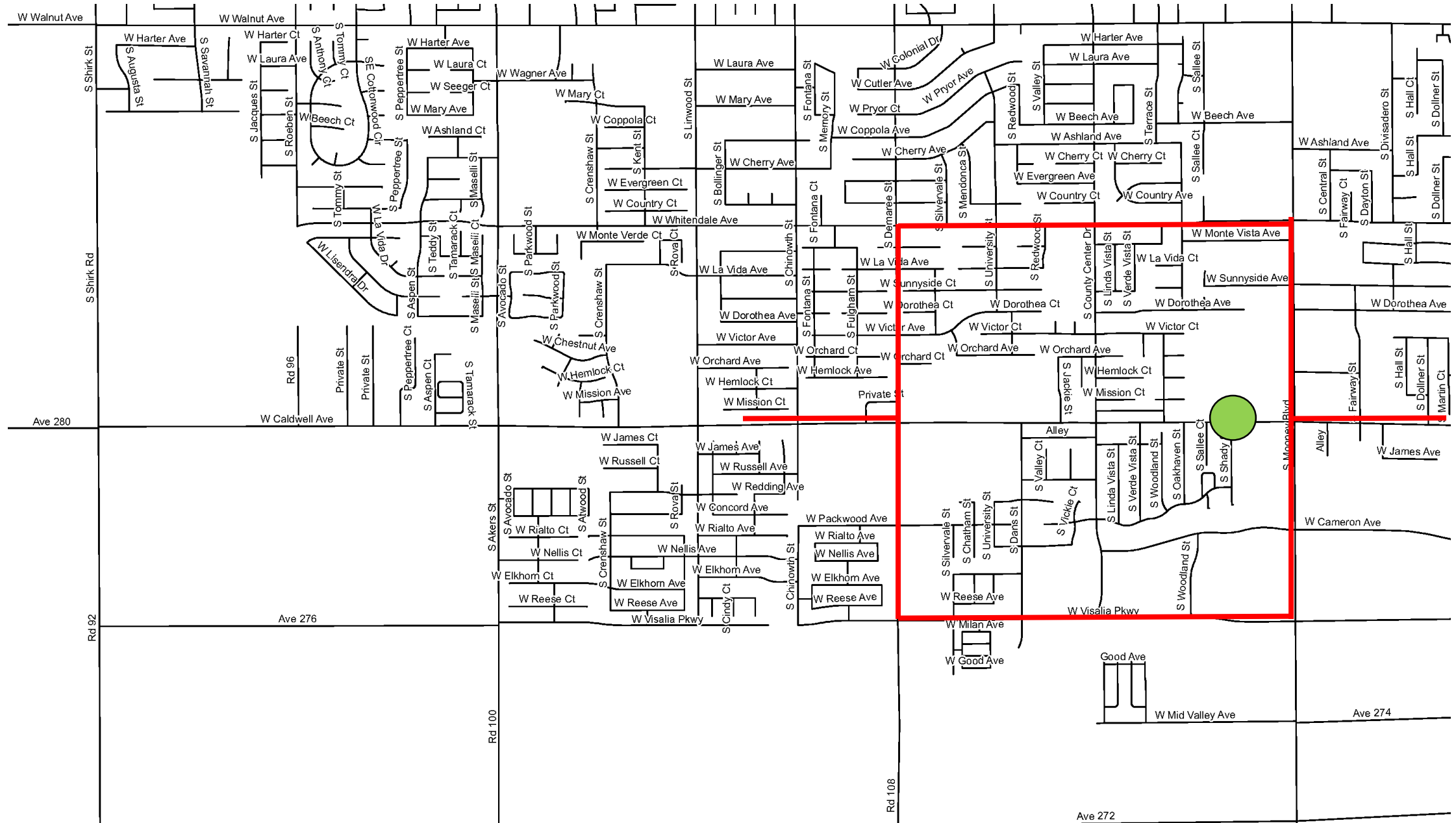
## Phase E Detour – County Center Dr



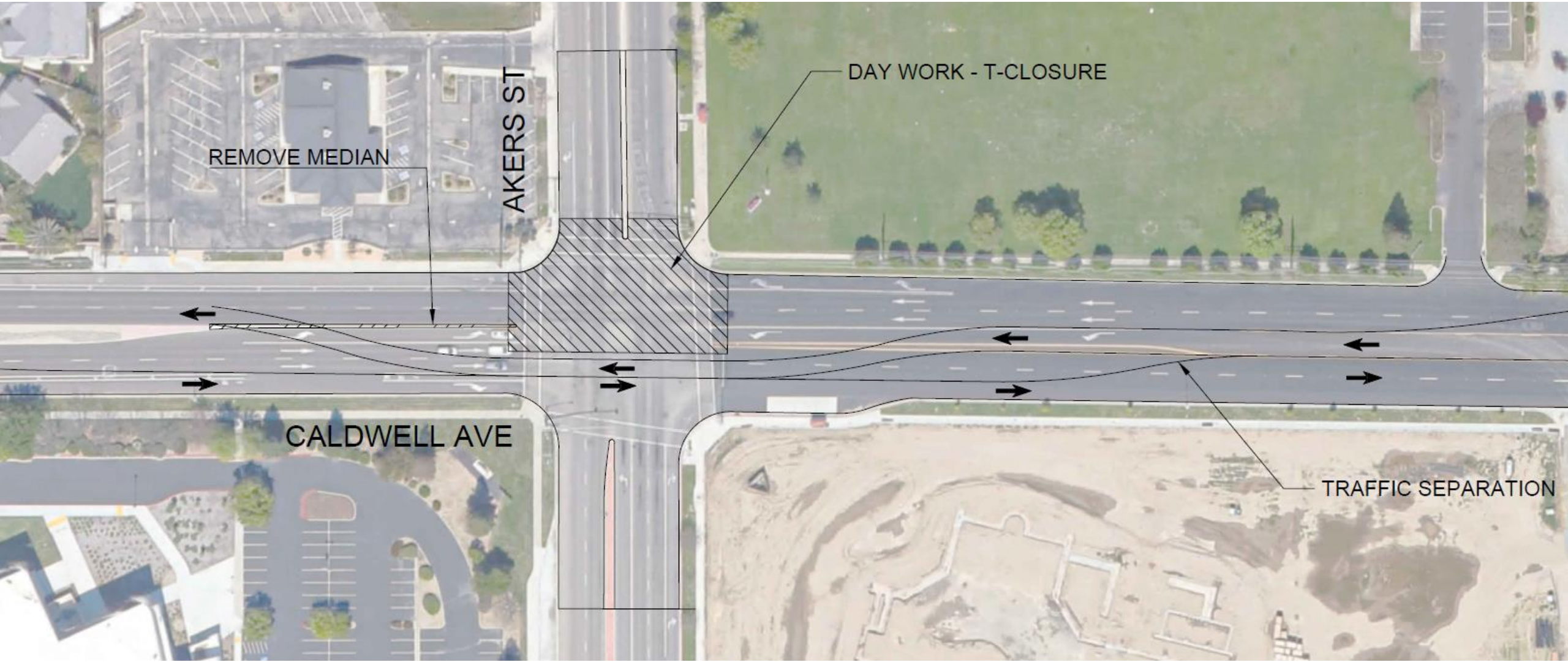
## Phasing Concept – Intersection Detours



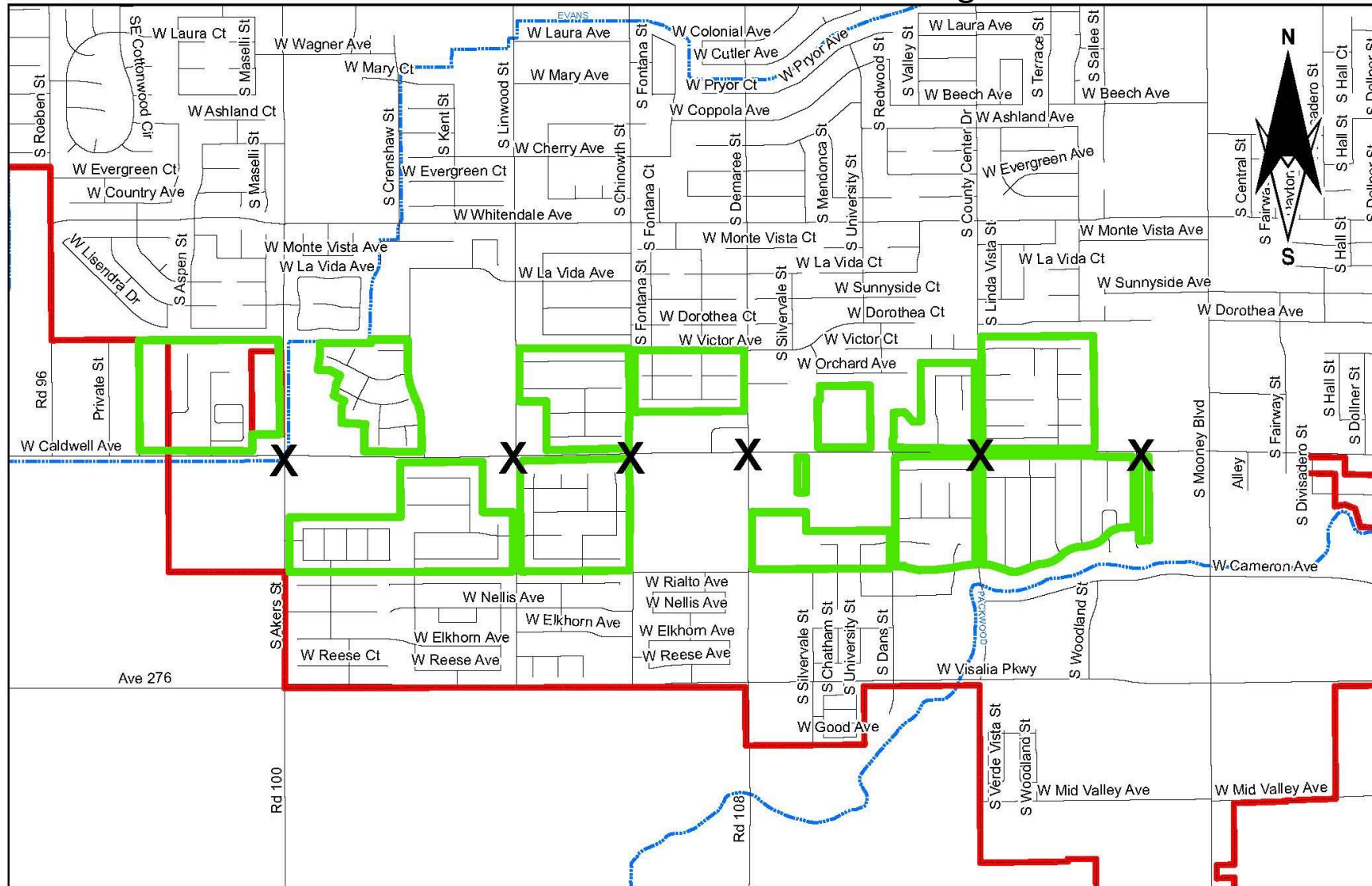
## Phase F Detour – Shady St



## Akers St & Caldwell Ave – Day Work – T Closure Alternative

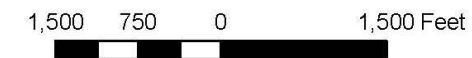


## Residential Noise Considerations at Night

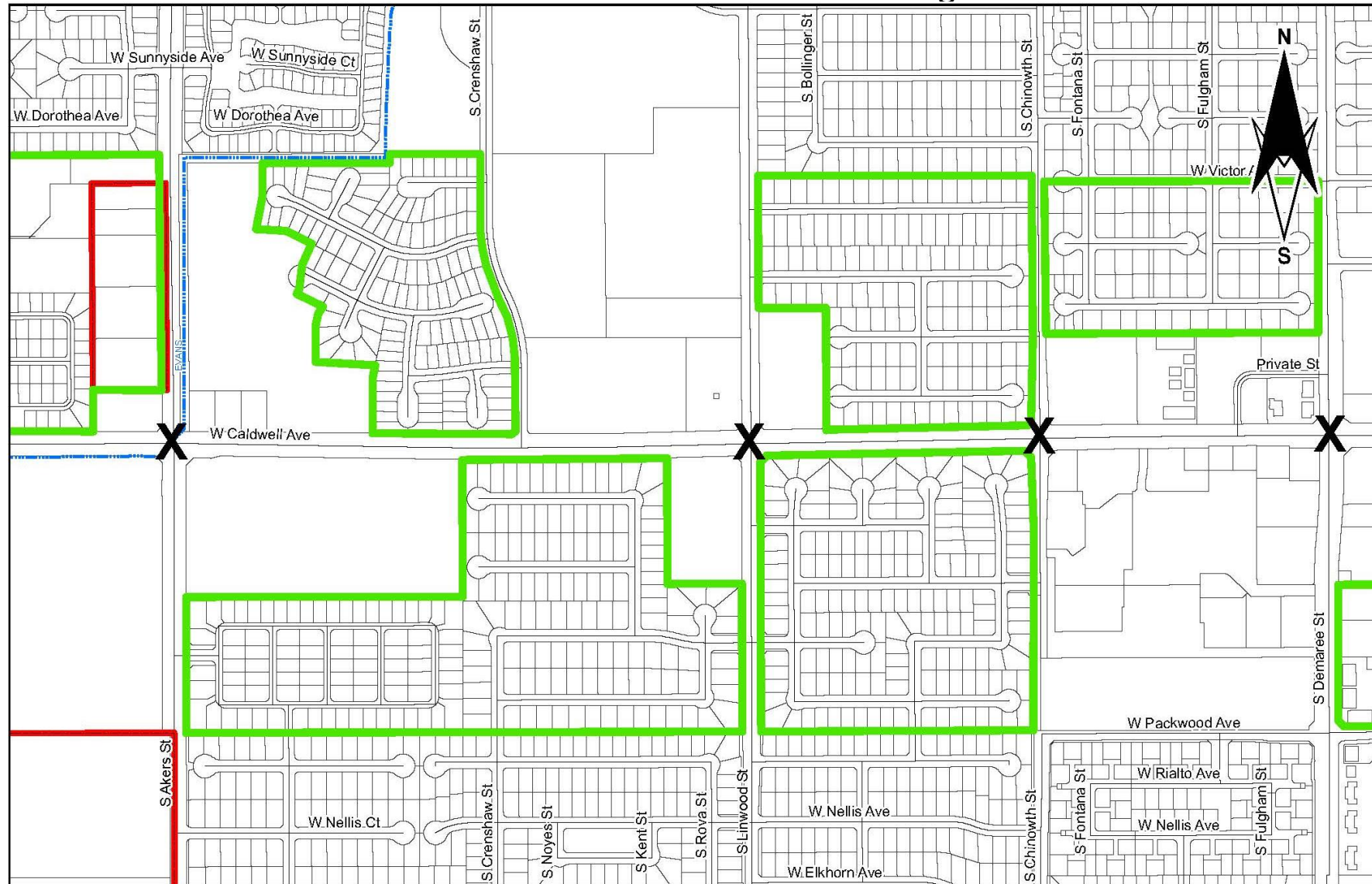


 Adjacent Residential Areas  
X = Night Closure Locations

## Caldwell Ave. - Akers to Shady



# Residential Noise Considerations at Night



 Adjacent Residential Areas

**X = Night Closure Locations**

## Caldwell Ave. - Akers to Demaree

600 300 0 600 Feet

**X = Night Closure Locations**

600 300 0 600 Feet

## CP9485 Caldwell Ave Improvements: Akers St – Shady St

### Day Work (Partial Closure) & Night Work (Full Closure) Comparison

Points of Consideration	Night Work (Full Closure)	Day Work (Partial Closure)
Convenience for Residents	✗	
Traffic Impacts	✗	
Public and Worker's Safety	✗	
Construction Efficiency	5 working shifts ✗	8 working shifts
Noise Disturbance		✗
Overall Impacts	✗	



Most beneficial (Least Impactful)

## Questions & Discussion?

Points of Consideration	Night Work (Full Closure)	Day Work (Partial Closure)
Convenience for Residents	✗	
Traffic Impacts	✗	
Public and Worker's Safety	✗	
Construction Efficiency	5 working shifts ✗	8 working shifts
Noise Disturbance		✗
Overall Impacts	✗	



Most beneficial (Least Impactful)