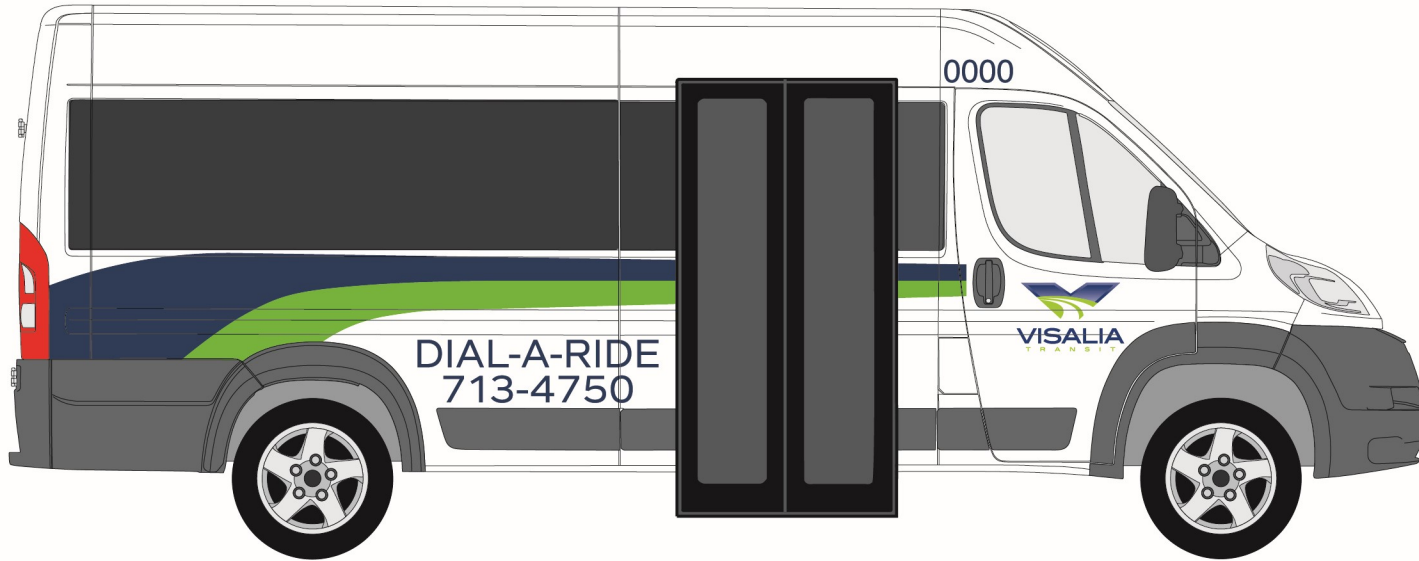
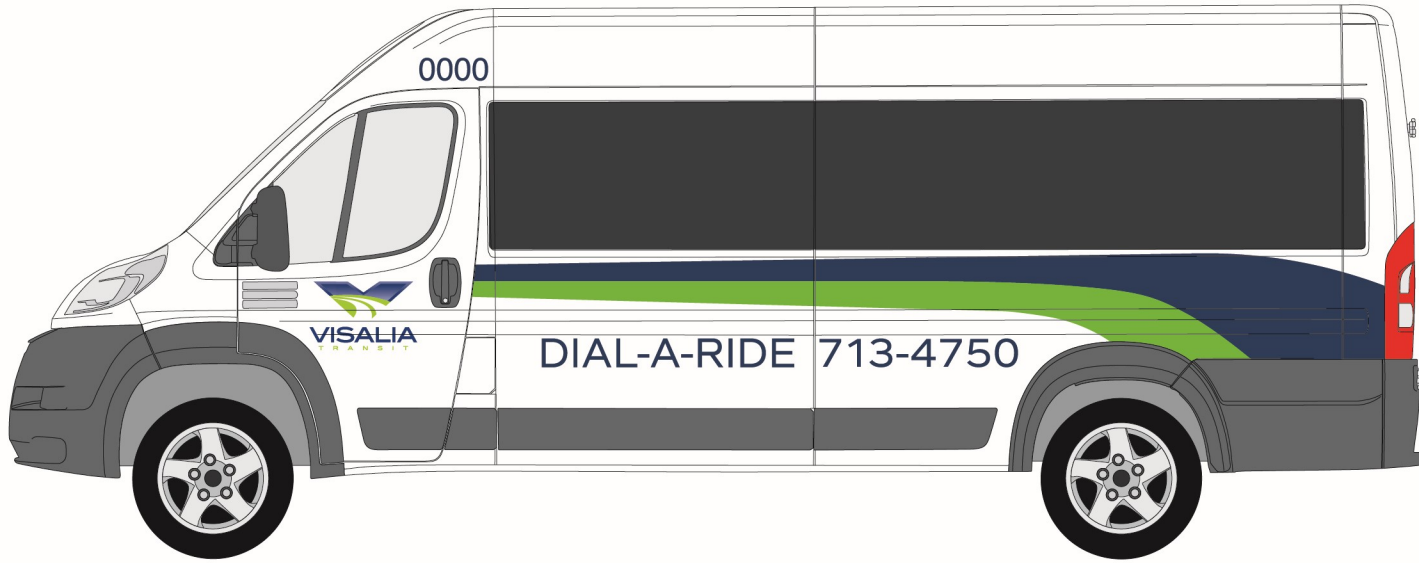


CalACT MBTA RFP #20-01 - Class P - Quote Sheet (Rev 2022)				
Vehicle Type:	Class P - BraunAbility Promaster (Buy America Compliant)	Date:	8/27/2025	
Contact:	Carmen Quevado	Ramp Info:	<input checked="" type="checkbox"/> Braun <input checked="" type="checkbox"/> Front Side Loader	
Agency:	City of Visalia	Seat Material Level:	Vinyl	
Address:	425 E. Oak Ave, Suite 301	Seat Color:	Gray	
City, State, Zip:	Visalia, CA 93291	Flooring and Color:	Altro Meta Storm (Gray)	
Phone:	559-713-4592	Salesperson:	Mike Farr	
E-Mail:	<a href="mailto:Caleb.Bowman@visalia.city">Caleb.Bowman@visalia.city</a>	Salesperson Cell:	909-730-5319	
Delivery:	30-45 Days from PO (Currently In Stock) *Depending on Options*	Salesperson E-Mail:	<a href="mailto:mfarr@model1.com">mfarr@model1.com</a>	
Quantity:	Description	Price	Ext. Price	ADA
1	Braun - Lonestar - Class P - 3500 159" 8-pass/2WC	\$148,464.00	\$148,464.00	\$78,265.00
Published Options				
1	15 - Rear Step-Up to Seating Area in Rear of Van	Std	Std	Std
1	21 - Shoulder Belt Mount kit - Seatbelts Same Direction Rear Bench	Std	Std	Std
1	45 - Drivers Running Board	Std	Std	Std
1	49 - Horizontal Wall Grabrail at Wheelchair Position	Std	Std	Std
1	51 - Braun Ramp ILO OEM	Std	Std	Std
1	62 - External Power Door Lock Switch	Std	Std	Std
1	63 - Grab Bar Rear Seating Area	Std	Std	Std
1	64 - Roof Mounted Grab Bar	Std	Std	Std
1	65 - Wheelchair Area Grab Bar	Std	Std	Std
1	72 - Rear Tow Hooks	Std	Std	Std
1	82 - Rear Backup Camera and Monitor	Std	Std	Std
1	97 - Delivery Zone 1	\$886.00	\$886.00	
1	*112 - Bus Style electric bus door (3500 Only. N/A for 1500)	Std	Std	Std
Non-Published Options				
2	Q-Straint ONE Tie Down System	\$0.00	\$0.00	
1	Freedman Seat Link System	\$0.00	\$0.00	
1	Ram Tablet Mount	\$500.00	\$500.00	
1	Router/Antenna Install	\$4,400.00	\$4,400.00	
1	REI 6 Camera With Install (Visalia Spec)	\$5,869.00	\$5,869.00	
1	Storage Box/DVR Holder in place of co-pilot seat	\$1,574.00	\$1,574.00	
1	Fabricate/Install Bracket for GFI Genfare Fast Fare (See Pictures)	\$0.00	\$0.00	
1	Graphics (Visalia Dial A Ride Layout)	\$0.00	\$0.00	
		Class P - Base Price	\$148,464.00	
		Published Options	\$886.00	
		Non-Published Options	\$12,343.00	
		Total	\$161,693.00	\$78,265.00
		Doc Prep Fee	\$85.00	
The Non-Taxable Amount is the ADA Equipment in the Base and Added as Options		Non-Taxable	\$78,265.00	
		Taxable Amount	\$83,513.00	
Visalia*		Tax Total	\$7,098.61	8.500%
		Sub-Total	\$168,876.61	
		CalACT Fee	\$2,425.40	
		DMV E-File Fee:	\$33.00	
		DMV Fee	\$0.00	(Estimated)
		Tire Fee	\$12.25	
		Total	\$171,347.25	Insert Miles
		Number of Units	4	
		Final Total	\$685,389.00	

**ADA AMOUNT \$78,265 Includes Items Below**  
**-Low floor materials and labor (Compliant with ADA Law)**  
**-Braun Ramp**  
**-Wheelchair area grab handles, ADA compliant van, etc.**  
**-ADA tie down kits (Belts/Lap/Shoulder)**  
**-ADA Q One Wheelchair system (2)**

Purchasing of vehicles requires a CALACT membership, letter of assignment, and payment of procurement fee.  
 If you have any questions, please contact CALACT direct at 916-920-8018..





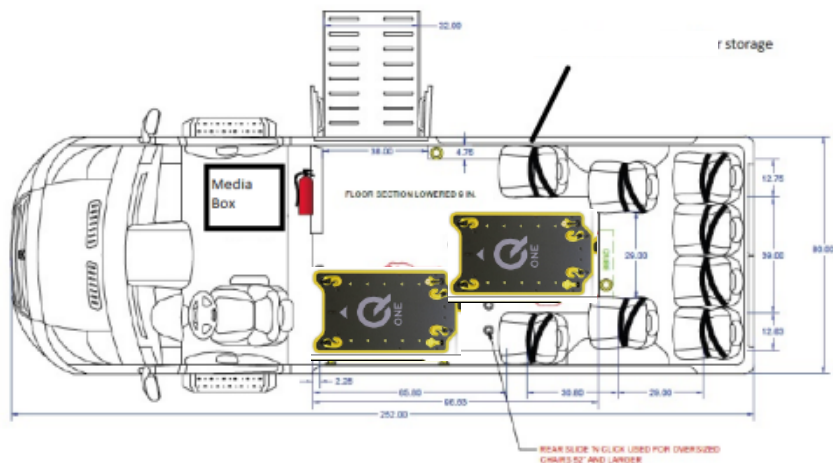


Creative Bus Sales  
THE NATION'S LARGEST BUS DEALER SINCE 1980

## BraunAbility ProMaster 3500

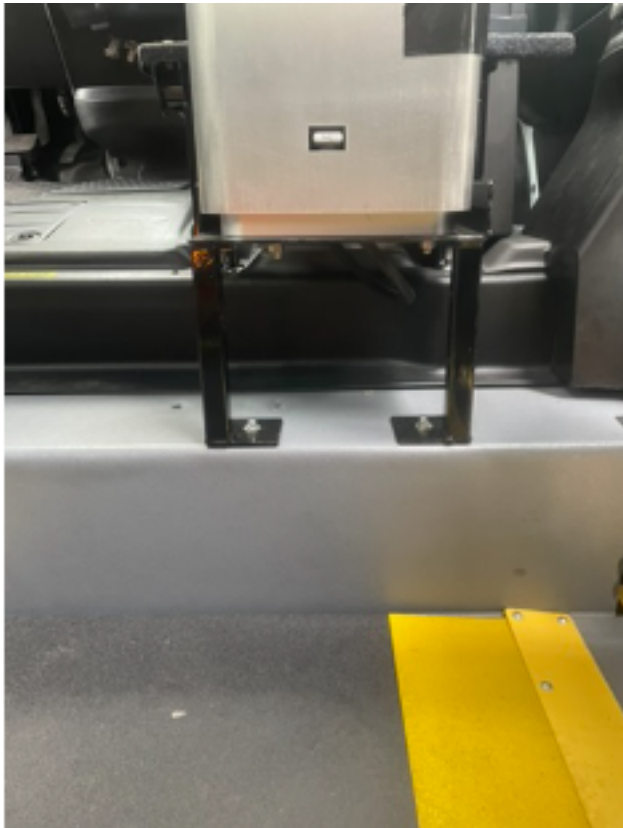
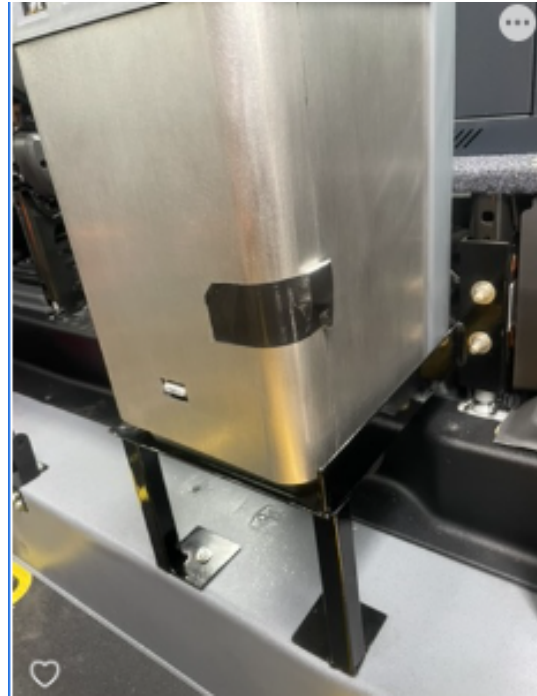
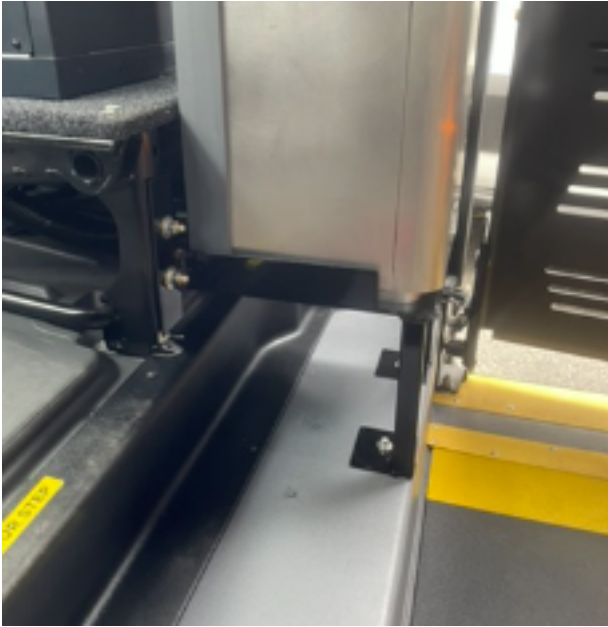


\*Photos not to exact specifications





## FAREBOX BRACKET EXAMPLES







# Promaster **CompanionVan®** - Buy America





# Promaster CompanionVan® - Buy America

## Standard Equipment

- Lowered floor, side entry, long cut conversion with bus style door
- BraunAbility manual swing away ramp 32" wide
- Gerflor flooring
- Insulated ABS interior ceiling & walls
- New exhaust system
- New Freedman GO-ES seating
- Safety Kit (first aid kit, fire extinguisher, triangles)
- Back up alarm - interlock system
- LED strip lighting
- Emergency exit
- Driver and passenger sidesteps
- Handrails & decals
- 36" A&M Systems power door
- Fast idle
- Amber LED light



## Q'Straint One (Qty. 2)

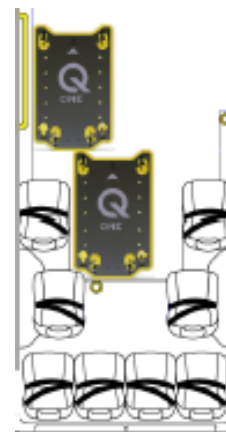
- All-in-one wheelchair securement station
- Fully secure wheelchair in under a minute
- Easy & intuitive - easy to reach hook ups
- Simple color & numbering sequencing, visual indicators, pre-positioned belt, and push-button operation
- Overall dimensions - width 30", height 1.41", length 48"
- Q'Straint One is fully crash tested and meets all current ADA requirements, including RESNA WC-4, Section 18; WC18, WC19, and 150-1054-1

## Q'Straint InQline Assist

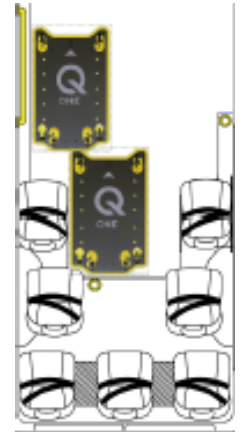
- Controlled steering - provides operators full control of the passenger boarding and debording process
- Reduces driver injury and operator liability
- Increased loading capacity
- Safety stop
- Enhanced rider experience
- Automatic winch system

## Trans/Air AC System

- Specifically designed for Ram Promaster
- Stand alone system
- Total cooling capacity - 50,000 BTU



17" Wide Seats



19" Wide Seats

## Freedman Seating Upgrades

- Armrest
- Additional seat bottom cushion
- Stainless steel grab handles
- Level 5 vinyl - Docket 90 gray
- Seat Link
  - Seat sensors track occupancy and belt status, and wirelessly communicate to the driver
  - A head unit displays seat status of all passenger seats, records and stores data in case of an event

## Q'Straint Omni Floor

- Interlocking aluminum planks
- Ultra-durable and corrosion resistant
- Change your layout
- Light and strong
- A smart investment



Model1.com | 800.326.2877



**MODEL1**  
COMMERCIAL VEHICLES





### Class P Standard Build Options

1	Ram Pro Master 3500 Van Ext. Cargo Van 159" WB Lowered floor side entry conversion-bus door style
*	Gerflor Flooring or equal approved
*	Panels for Walls: ABS Interior wall, ABS ceiling Insulation for walls
*	Set of Q'Straint with L Track - QRT 360
*	Air Conditioner: Rear AC and Rear Heat
*	New Exhaust System
*	2 - Passenger Freedman Seats, 3pt (on back-level 4 vinyl) curbside
*	2 - Passenger Freedman Seats, 3 pt (on back-level 4 vinyl) streetside
*	2 per van /1 Passenger rigid seats (level 4 vinyl) curbside
*	2 per van / 1 Passenger rigid seat (level 4 vinyl) streetside
*	Safety Kit (first aid kit, fire extinguisher, triangles)
*	Back up alarm-Interlock System
*	LED strip lighting
*	Emergency window
*	Kit stowage Assy-Q5-8525-SC
*	Driver & Passenger side step
*	Handrails-& Decals
*	36" A&M Systems Power Door
*	Fast Idle *required*
*	Amber LED light
<b>QTY</b>	<b>OPTION DESCRIPTION</b>
1	12" belt extender
1	Qstraint 20" belt extender
4	14" webbing loops
1	Belt web cutter
1	Dash Warning Light
1	TA45LPSC2SLP Super 10
*	10 unit first aid kit
*	Blood pathogen kit
*	2.5 4 BC fire extinguisher
*	Reflective triangles



## SUMMARY OF STANDARD WARRANTIES

(Provide complete warranty information and parchment with proposal)

Warranty	Miles	Years
Body Structure	36,000	3 years
Chassis	36,000	3 years
Engine	60,000	5 years
Transmission	60,000	5 years
Air conditioner	Unlimited	3 years
Lift/Ramp	Unlimited	5 years
EV Battery	N/A	N/A
EV Conversion/Installation	N/A	N/A
CNG Warranty (Install and tanks)	N/A	N/A