

*AMENDED BELISSA SUBDIVISION PHASE 1

BEING SITUATED IN A PORTION OF THE SOUTHWEST QUARTER AND SOUTHEAST QUARTER OF THE NORTHEAST QUARTER OF SECTION 14, TOWNSHIP 18 SOUTH, RANGE 24 EAST, MOUNT DIABLO BASE AND MERIDIAN, IN THE CITY OF VISALIA, COUNTY OF TULARE, STATE OF CALIFORNIA

DESIGNATED REMAINDER

LEGEND

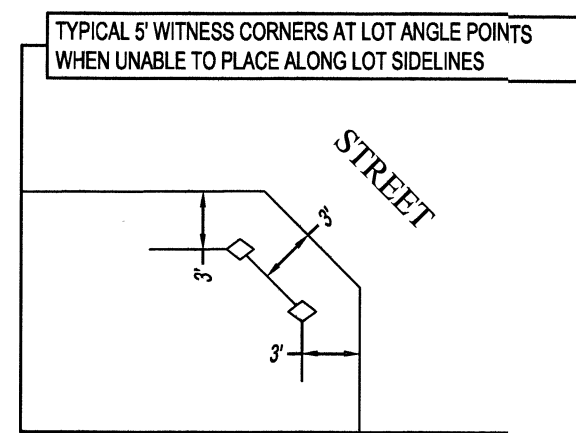
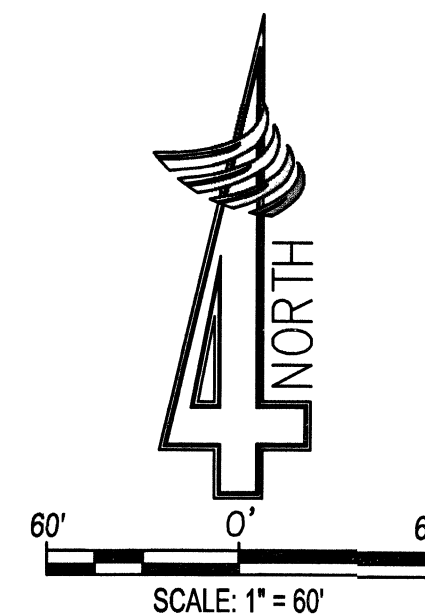
- △ FOUND MONUMENT AND ACCEPTED AS DESCRIBED
- SET 3/4" IRON PIPE TAGGED "PLS 9849" DOWN 6IN
- SET BRASS DISC FLUSH IN CONC. TAGGED "PLS 9849"
- ◇ SET 3/4" IRON PIPE TAGGED "PLS 9849" 1.00' FOOT FROM TRUE CORNER ALONG PROPERTY LINE
- ▲ FOUND A BRASS DISC FLUSH IN CONCRETE PER WILD HORSE RANCH NO. 2 RECORDED IN BOOK 41, OF MAPS, PAGE 85, TCR.
- () WILD HORSE RANCH NO. 1 RECORDED IN BOOK 41, OF MAPS, PAGE 84, TCR
- [] WILD HORSE RANCH NO. 2 RECORDED IN BOOK 41, OF MAPS, PAGE 85, TCR
- (N) NO BUILD ZONE PER THIS MAP
- SHADED LINE INDICATES SUBDIVISION BOUNDARY
- PUE PUBLIC UTILITY EASEMENT
- BWE BLOCK WALL EASEMENT
- TCR TULARE COUNTY RECORDS
- OR OFFICIAL RECORDS
- (R) RADIAL BEARING
- RS RESERVE STRIP NOW OFFERED FOR DEDICATION FOR FUTURE STREET PURPOSES (NOT TO SCALE)
- * AMENDED CHANGES PER THIS MAP, SHOWN HEREON

NOTE:

SEE SHEET 2 FOR RADIAL AND CURVE TABLES

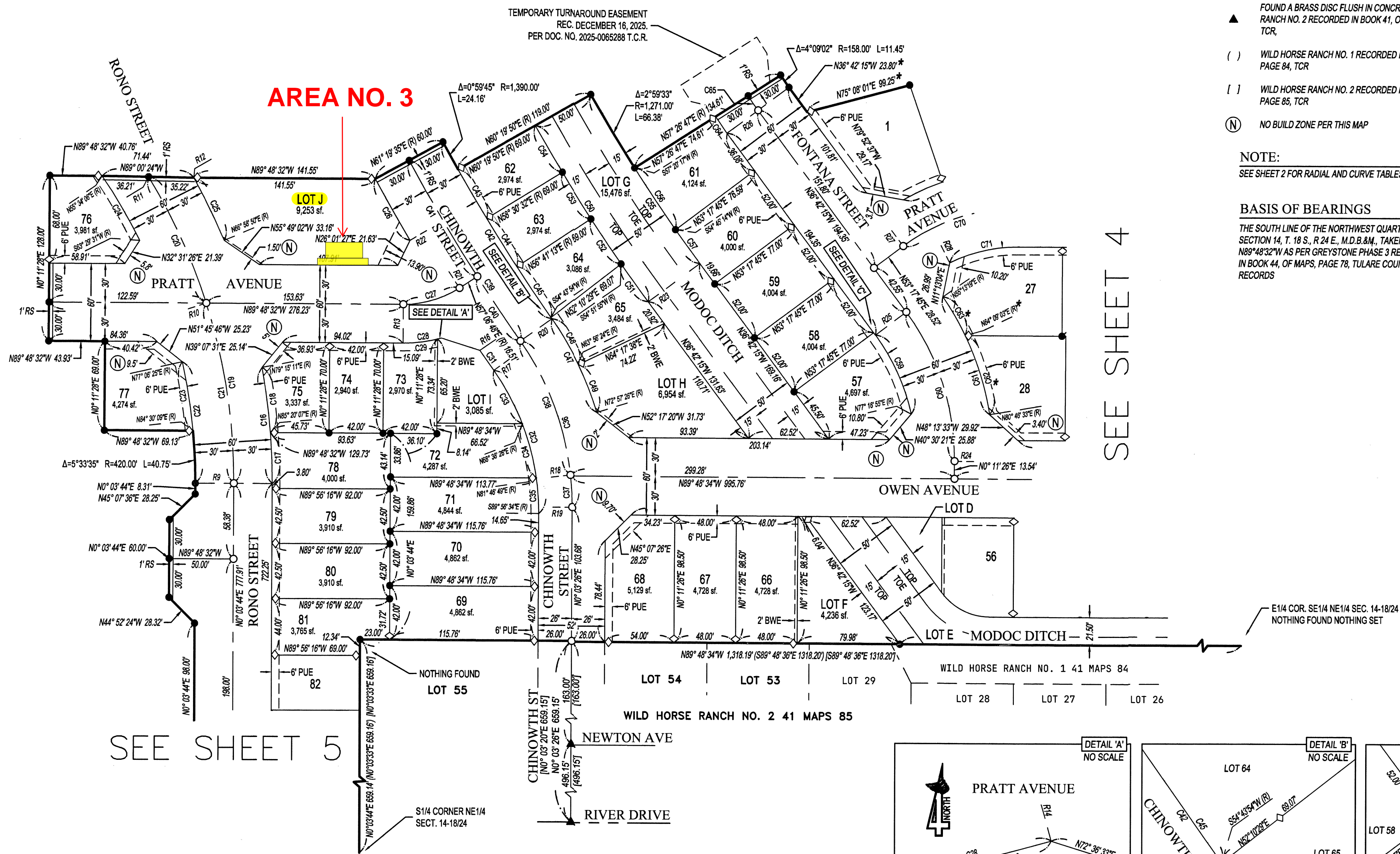
BASIS OF BEARINGS

THE SOUTH LINE OF THE NORTHWEST QUARTER OF SECTION 14, T. 18 S., R. 24 E., M.D.B.&M., TAKEN AS N89°48'32"W AS PER GREYSTONE PHASE 3 RECORDED IN BOOK 44, OF MAPS, PAGE 78, TULARE COUNTY RECORDS

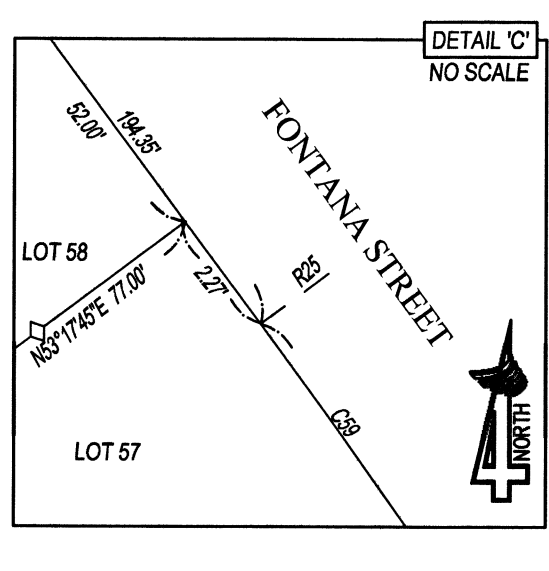
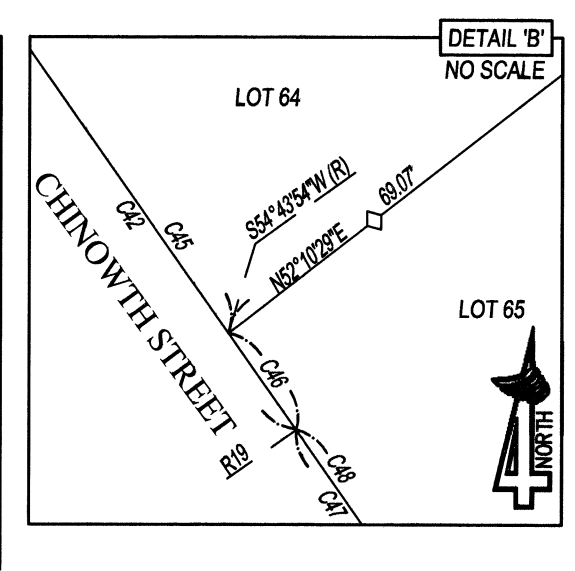
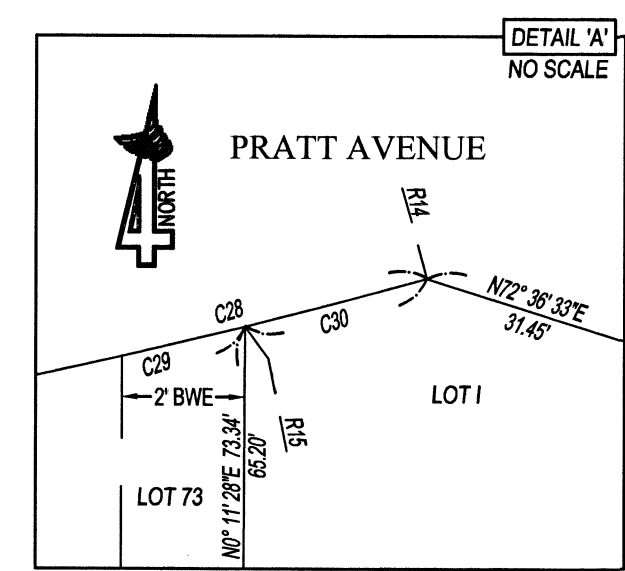


SEE SHEET 4

DESIGNATED REMAINDER



SEE SHEET 5

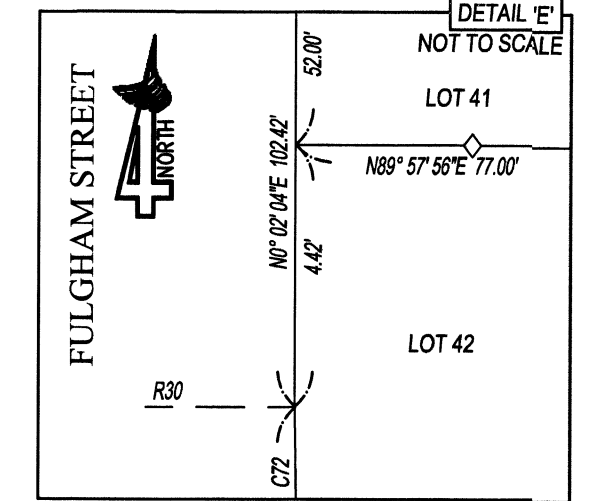
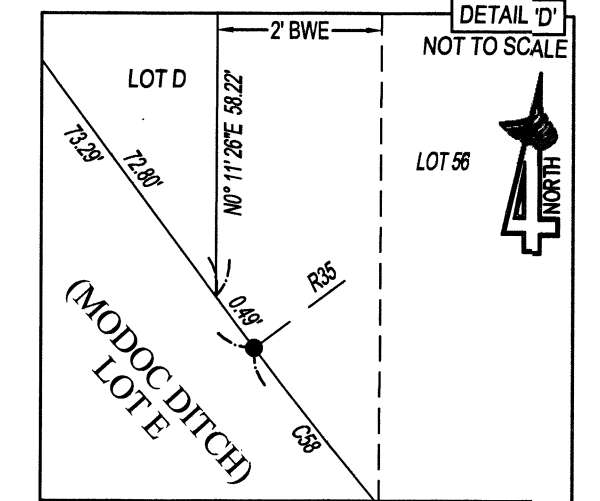
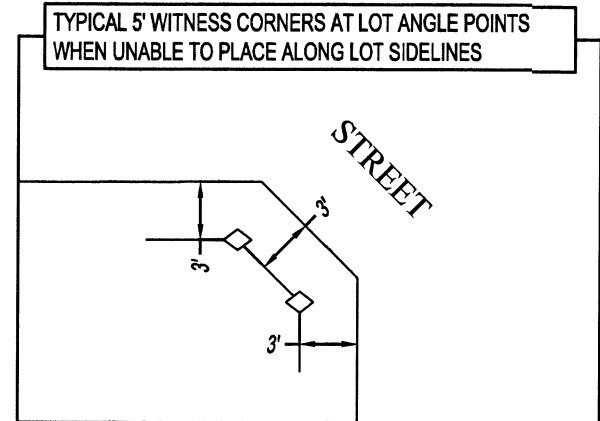
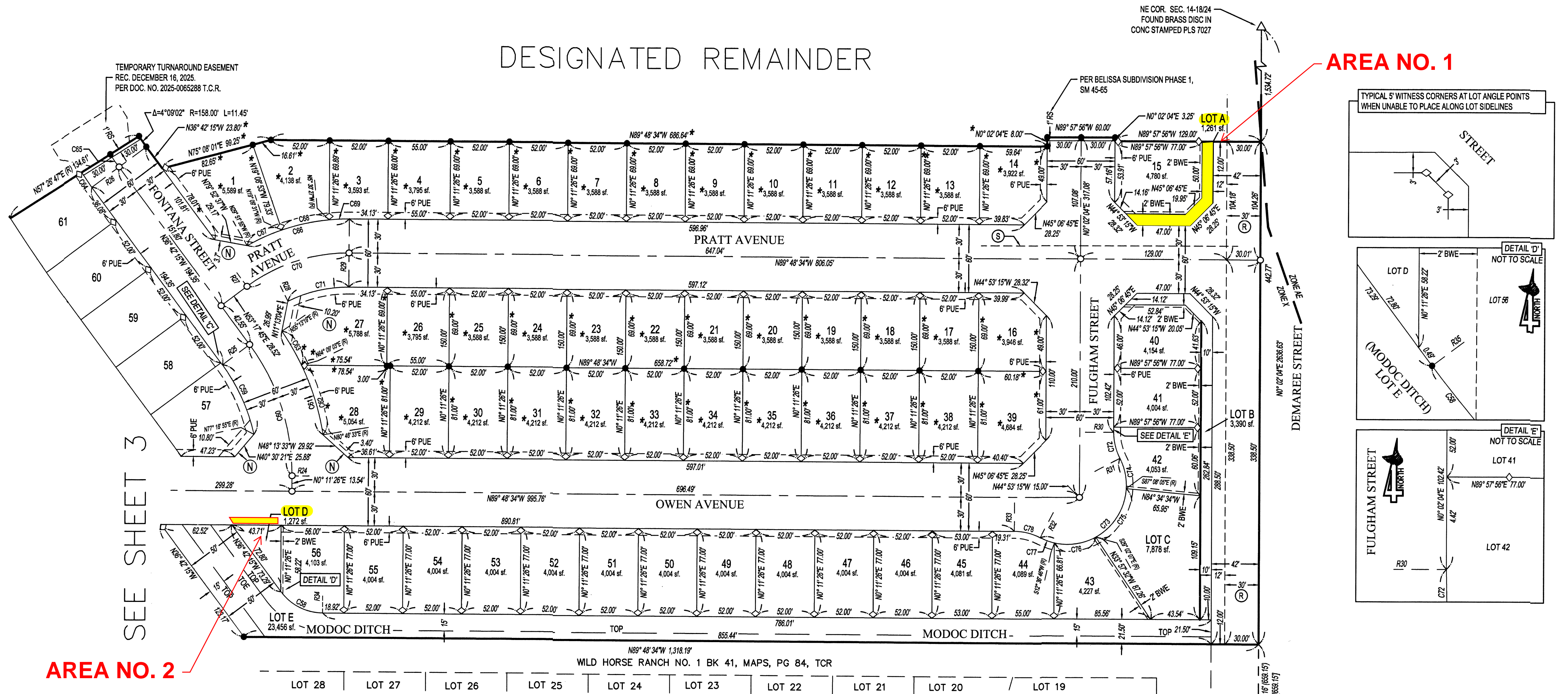


324 S. SANTA FE ST., STE. A
P.O. BOX 7593
VISALIA, CA 93292

*AMENDED BELISSA SUBDIVISION PHASE 1

BEING SITUATED IN A PORTION OF THE SOUTHWEST QUARTER AND SOUTHEAST QUARTER OF THE NORTHEAST QUARTER OF SECTION 14, TOWNSHIP 18 SOUTH, RANGE 24 EAST, MOUNT DIABLO BASE AND MERIDIAN, IN THE CITY OF VISALIA, COUNTY OF TULARE, STATE OF CALIFORNIA

DESIGNATED REMAINDER



SEE SHEET 3

AREA NO. 2

- LEGEND**
- △ FOUND MONUMENT AND ACCEPTED AS DESCRIBED
 - SET 3/4" IRON PIPE TAGGED *PLS 9849* DOWN GIN
 - SET BRASS DISC FLUSH IN CONC. TAGGED *PLS 9849*
 - ◇ SET 3/4" IRON PIPE TAGGED *PLS 9849* 1.00 FOOT FROM TRUE CORNER ALONG PROPERTY LINE
 - () WILD HORSE RANCH NO. 1 RECORDED IN BOOK 41, OF MAPS, PAGE 84, TCR
 - [] WILD HORSE RANCH NO. 2 RECORDED IN BOOK 41, OF MAPS, PAGE 85, TCR
 - (N) NO BUILD ZONE PER THIS MAP
 - (S) APPROXIMATE LOCATION OF SOCIAL EDISON POLE LINE EASEMENT REC. IN BOOK 1538 PAGE 359, O.R.
 - * AMENDED CHANGES PER THIS MAP, SHOWN HEREON
 - SHADED LINE INDICATES SUBDIVISION BOUNDARY
 - PUE PUBLIC UTILITY EASEMENT
 - BWE BLOCK WALL EASEMENT
 - TCR TULARE COUNTY RECORDS
 - OR OFFICIAL RECORDS
 - (R) RADIAL BEARING
 - RS RESERVE STRIP NOW OFFERED FOR DEDICATION FOR FUTURE STREET PURPOSES (NOT TO SCALE)
 - (R) 30' RIGHT OF WAY PER ASSESSORS BOOK 77, PAGE 5, NO DOCUMENT INFORMATION WAS FOUND TULARE COUNTY ROAD PLAT ABSTRACT BOOK FOR THIS PORTION (NO RECORD AVAILABLE), SHOWN HEREON

NOTE:
SEE SHEET 2 FOR RADIAL AND CURVE TABLES

BASIS OF BEARINGS
THE SOUTH LINE OF THE NORTHWEST QUARTER OF SECTION 14, T. 18 S., R. 24 E., M.D.B.&M., TAKEN AS N89°48'32"W AS PER GREYSTONE PHASE 3 RECORDED IN BOOK 44, OF MAPS, PAGE 78, TULARE COUNTY RECORDS

