



# Traffic Safety Division Public Works





## Traffic Safety Staff

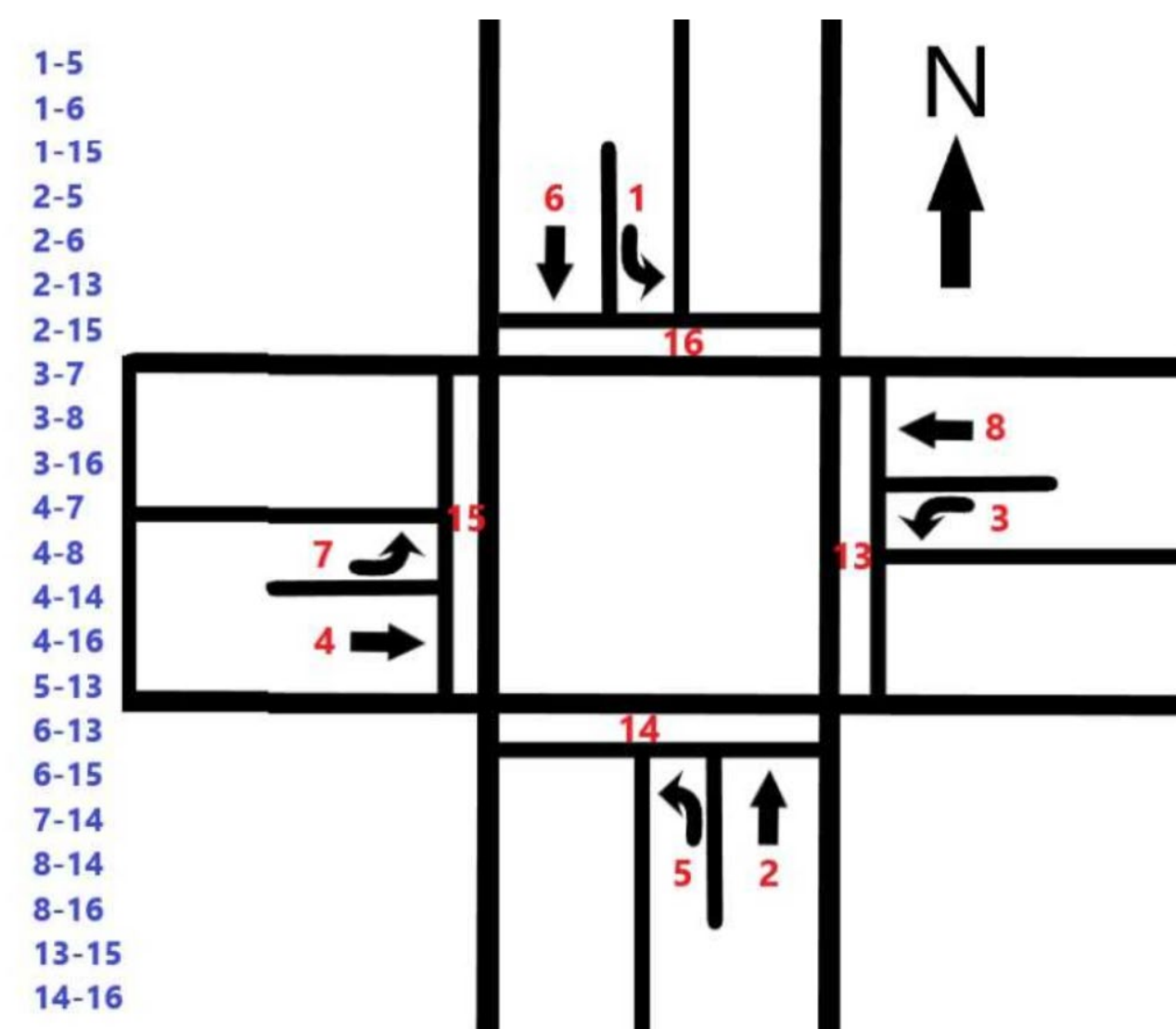
- (1) Traffic Operations Supervisor
- (1) Senior Traffic Safety Worker
- (2) Traffic Signal Technicians
- (1) Utility Line Locator
- (1) Part-time Traffic Safety Worker





The City of Visalia currently has 137 traffic signals, approximately 4,000 streetlights, nearly 20,000 regulatory and street name signs, an estimated 1,000,000 sq. ft. of pavement markings, and 9-10,000 annual 811 USA tickets called in.

- Annual traffic signal maintenance and repairs
- Streetlight repairs
- Regulatory and street name sign repair and citywide replacement
- School-zone flasher maintenance and repairs
- Pavement markings and curb-paint maintenance
- Marking miles of conduits, storm drains, and sanitary sewer lines that require 811 USA response





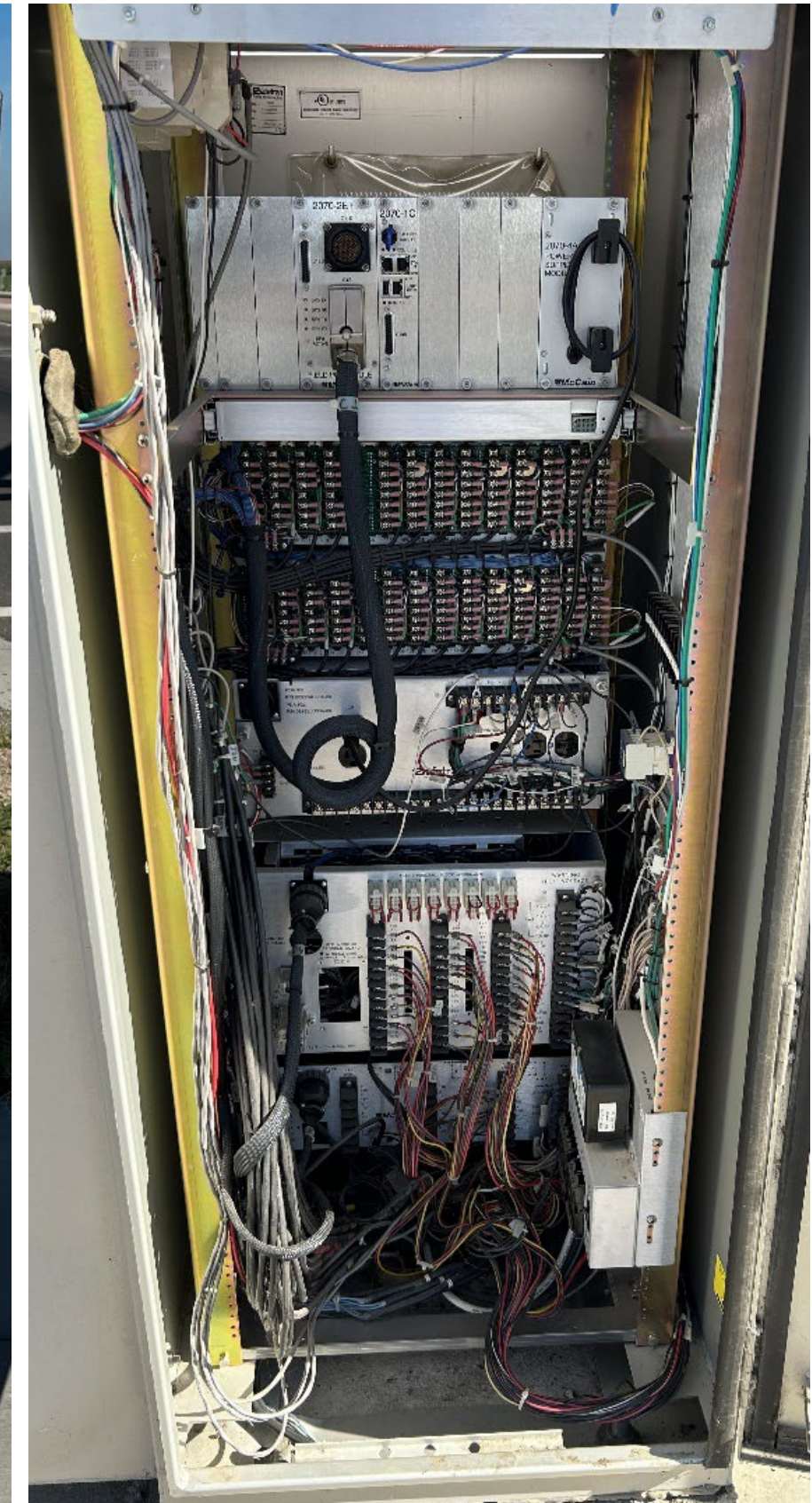
- Programming controllers and timing for the traffic signals
- An average of 12 signal pole knockdowns and 13 streetlight knockdowns annually
- Assisting the Streets Division with after - hours callouts when needed
- Managing over 400 annual CSR workorders related to traffic signals, streetlights, pavement markings, curb paint and street signs



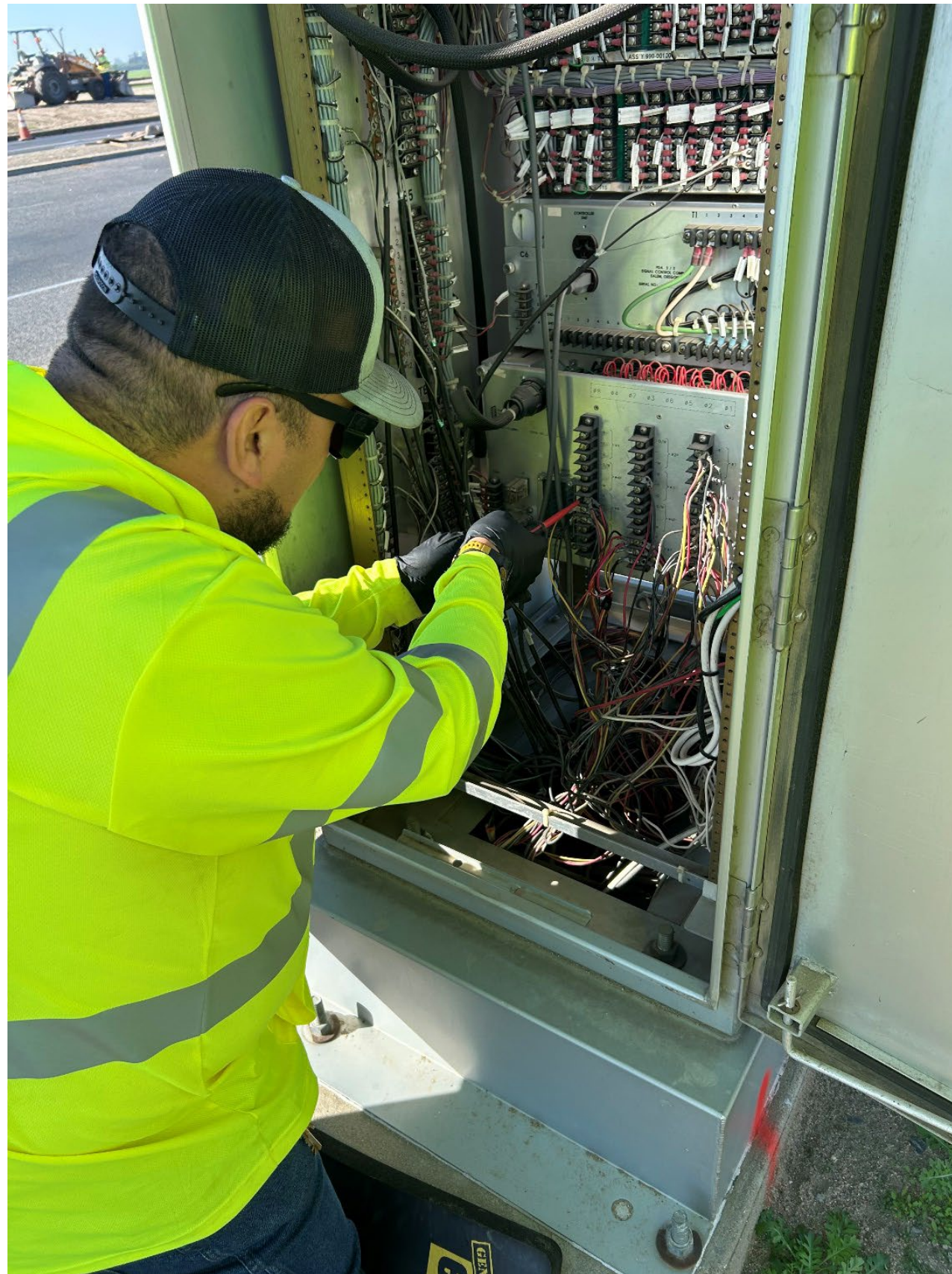


## Traffic signal maintenance

Preventative maintenance (PM) is performed on 10-14 intersections each month. Each inspection includes a thorough check of the electrical systems and components within the signal cabinets, as well as testing and cleaning. We also verify all vehicle and pedestrian indicators, test pedestrian push buttons, and check vehicle detection systems (including video, radar, induction loops, and EMS preemption). Lastly, we ensure that signal timing is current and accurate.







## Traffic signal troubleshooting

Troubleshooting a traffic signal requires careful thought and years of hands-on experience. A properly functioning signal involves many components working together, from the input file (such as induction loops, video detection, and radar) to the controller programming and timing, output file, and the field wiring.



## Replacing damaged video detection camera



## Traffic signal battery backup system

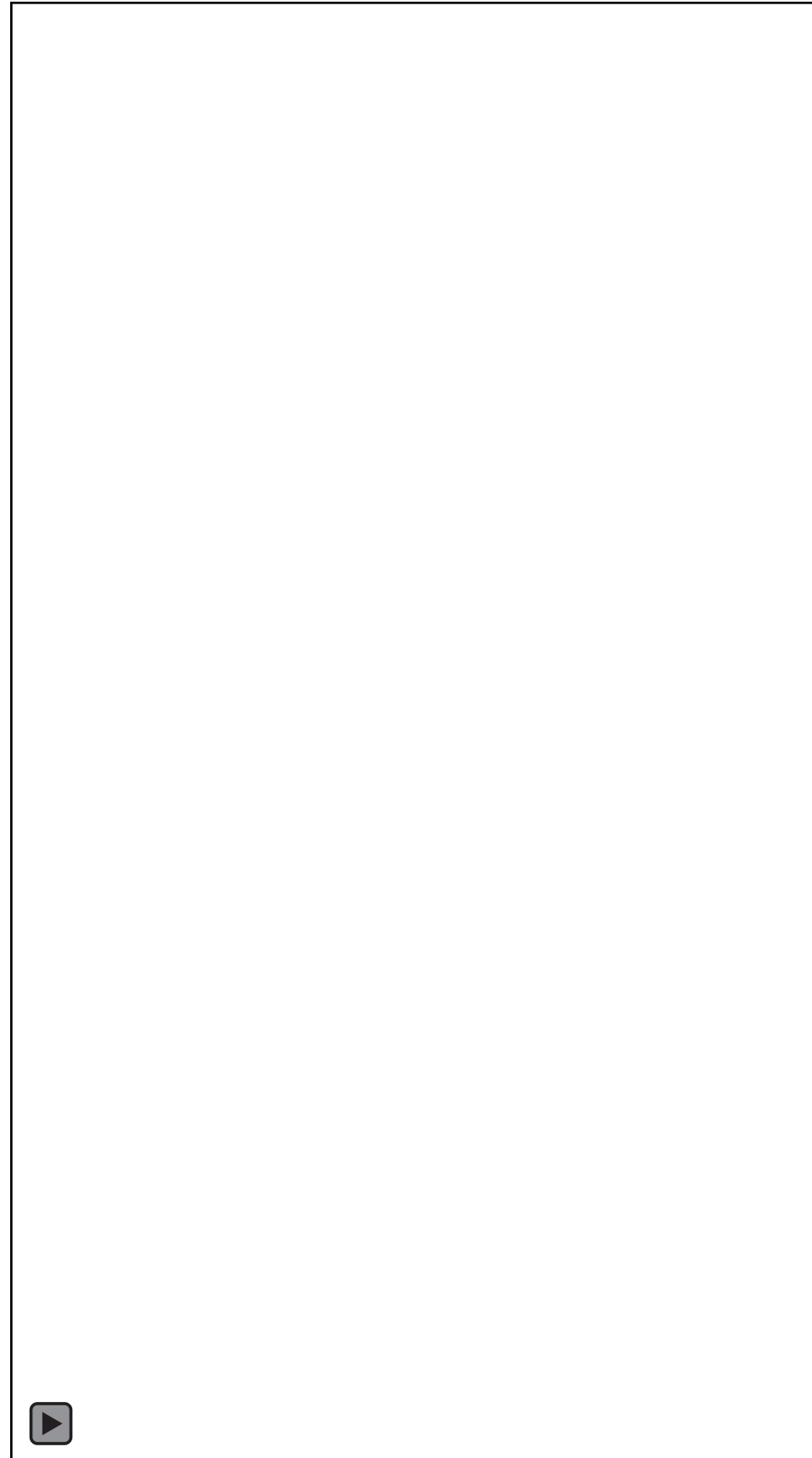




## Iteris video detection at Caldwell and Demaree



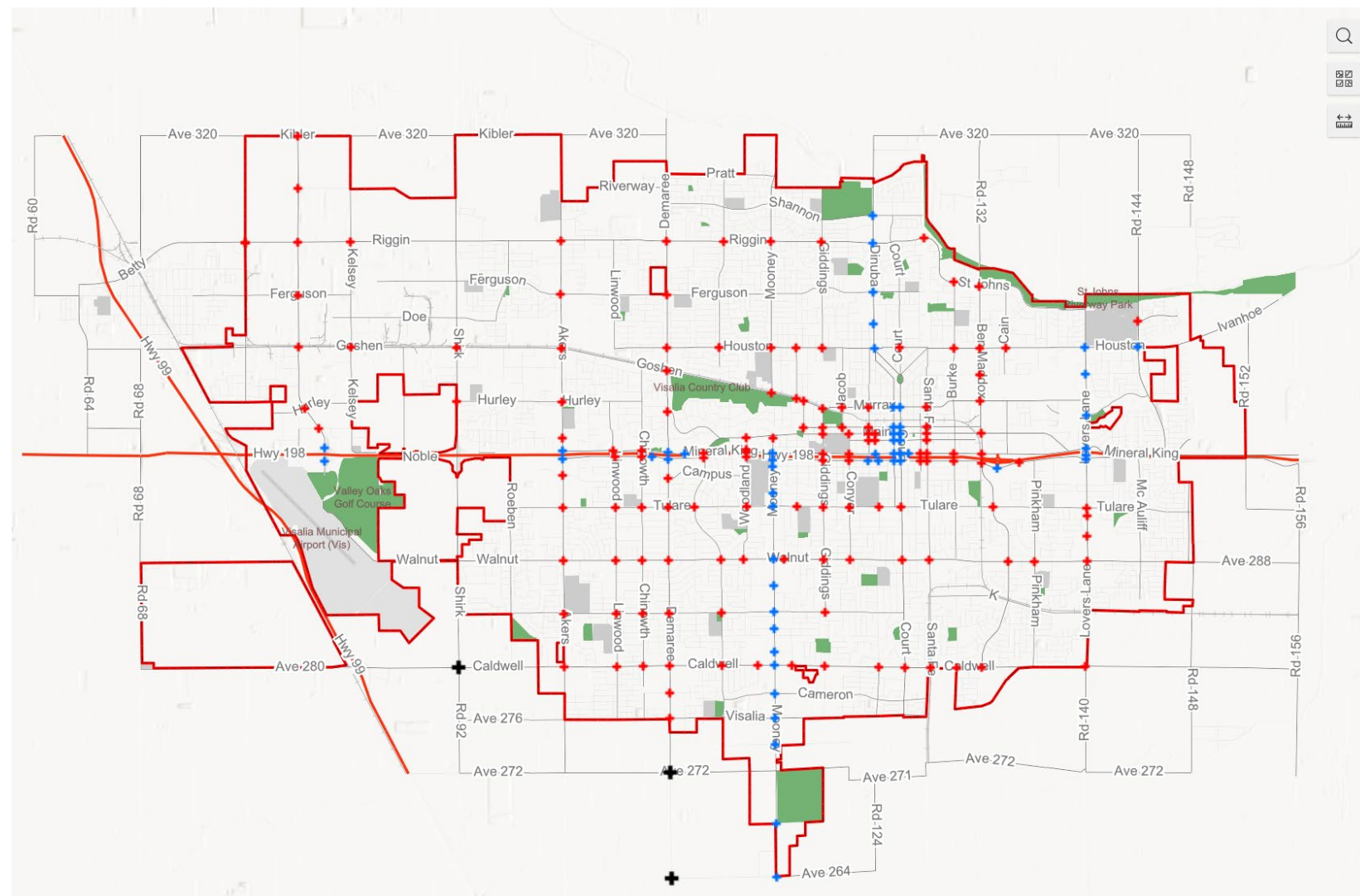




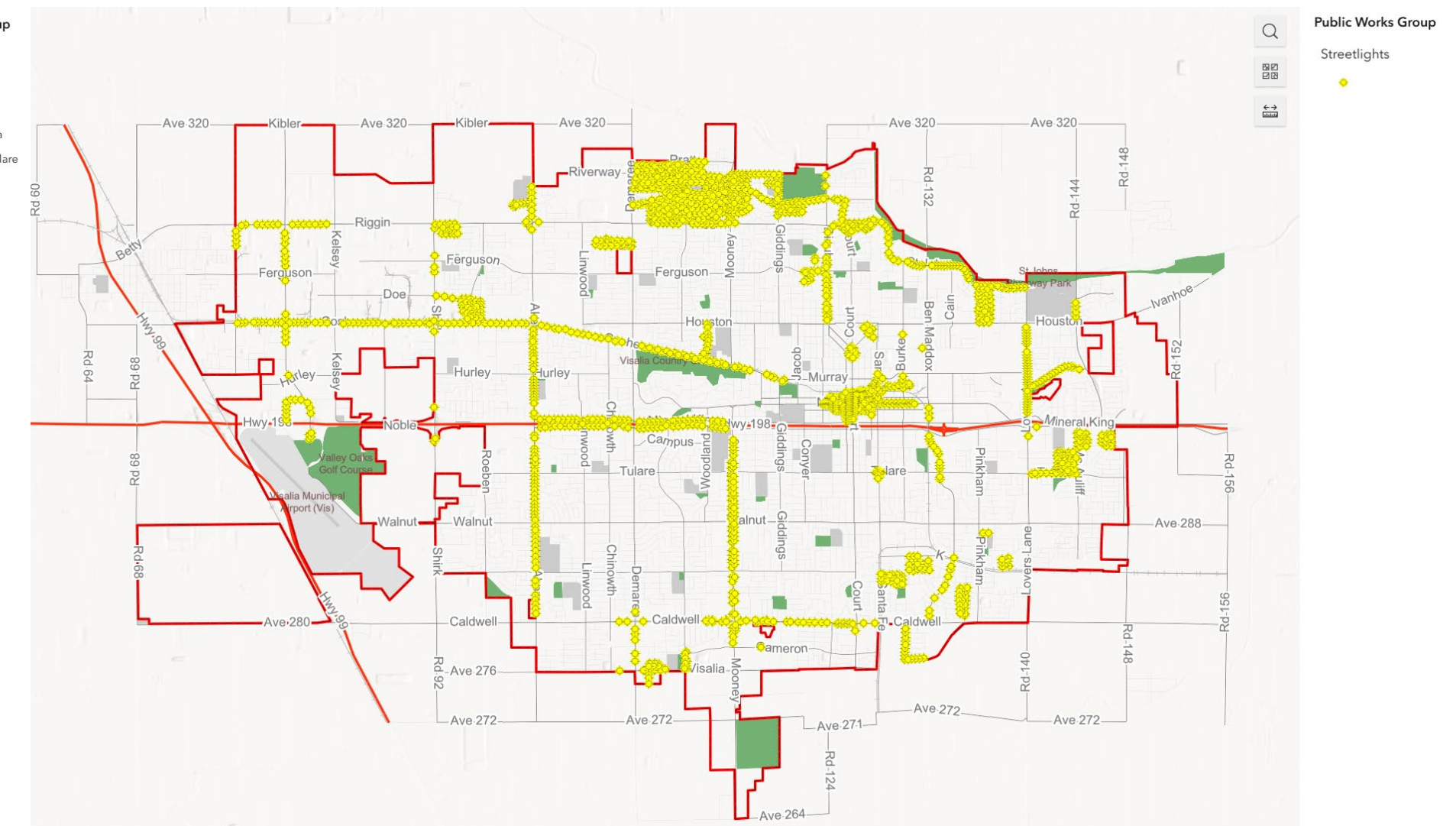
Iteris radar advance trigger  
line at Caldwell and Demaree



# Current maps of traffic signal and streetlight locations



137 city owned traffic signals



Approximately 2,000 city owned  
streetlight currently mapped





## Streetlight repair

We conduct regular streetlight checks to ensure all city-owned lights are operational. This involves driving through sections of the city and identifying any lights that are out. Since this must be done at night, we schedule early morning shifts to allow us to compile a list of lights that need attention. Once identified, we replace the faulty fixture with new, energy-efficient LED fixtures.



## Replacing underground conductors

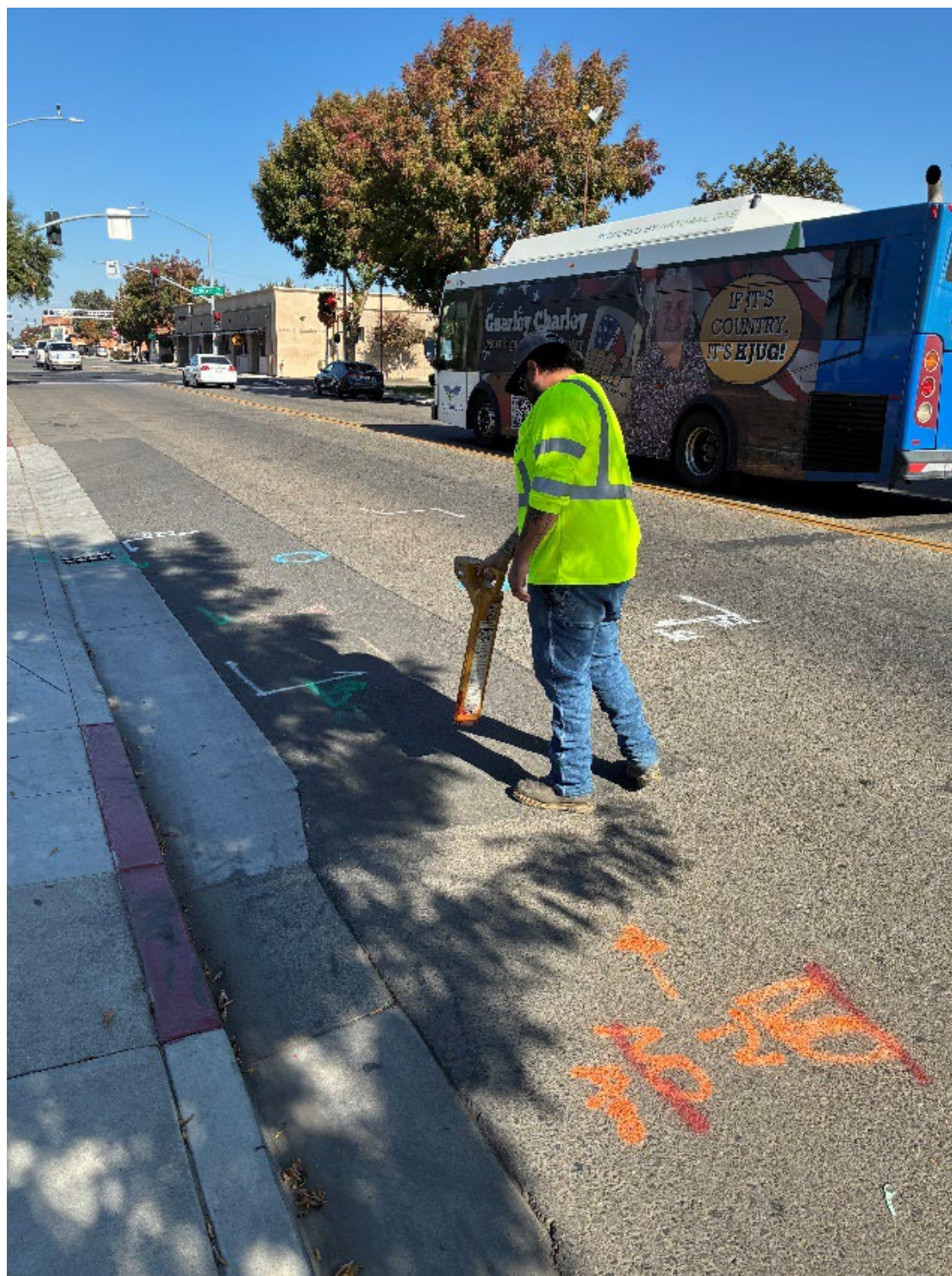
Damaged streetlighting wiring is a recurring issue. One of the main causes is ant damage, these insects often eat through the insulation, leading to shorts circuits and tripped breakers. Ant-related damage is something we must repair on a regular basis.





## 811 USA markings

All of the city's underground infrastructure, including traffic signal, streetlight and fiber optic conduits, storm drain and sanitary sewer lines must be accurately located, marked, and documented. Everyday each (811) USA Dig ticket that comes through must be reviewed, marked out, and signed off to ensure protection of all city utilities during excavation.





## Sign replacement and knockdown repair

The city is divided into 14 sections for the blanket replacement of regulatory and street name signs. Each section is fully surveyed before placing an order for new signs. Once the order is received, installation and updates to the city's inventory log take several months to complete.

Surveying typically takes place in late winter and early spring, allowing sign orders to be placed and manufactured during the paint season.

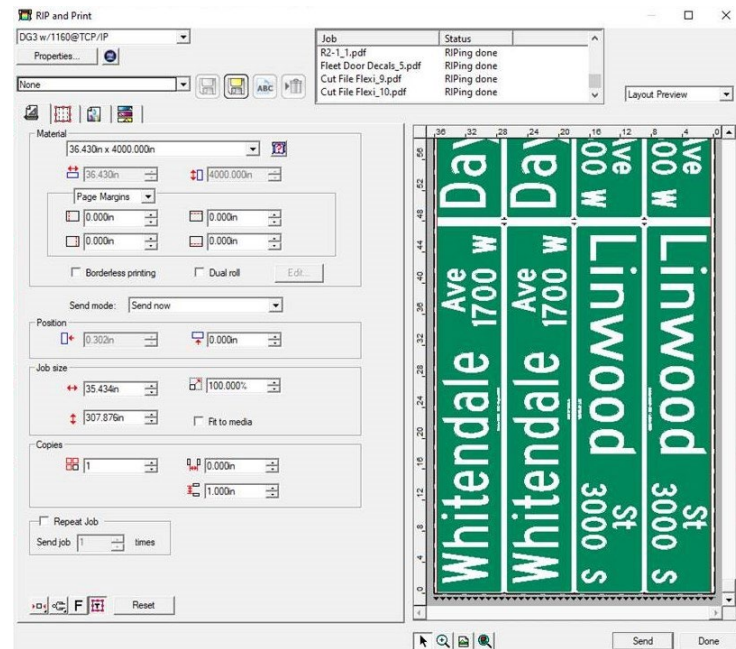
When the painting season ends, the focus shifts to sign replacement, which continues through the fall and winter months.





## Sign making

1. Each sign must be designed according to our standards



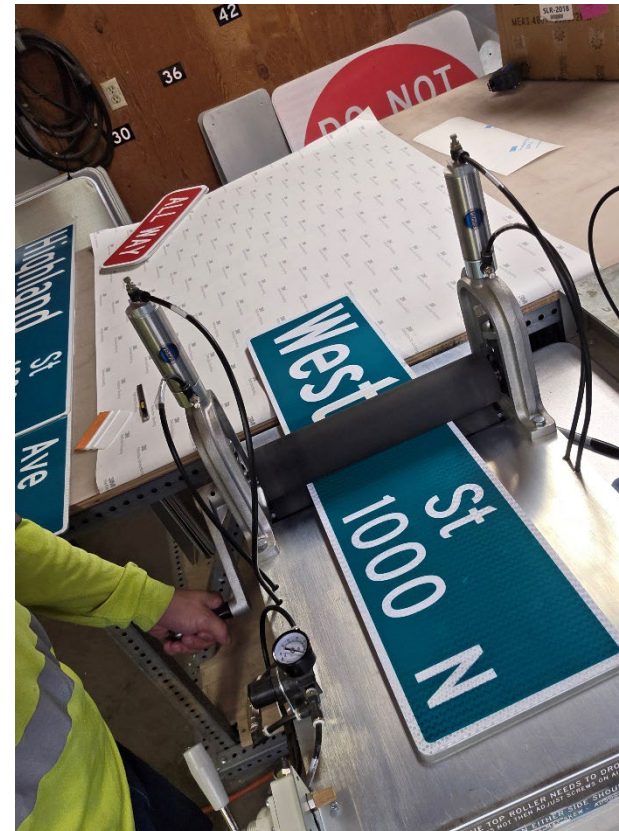
2. Use the computer and printer to print the sign



3. The plotter then cuts each sticker out



4. Then comes fabrication, adhering the sheeting to the blank metal sign



5. Finally the installation of the anchor, telespar pole and sign





## End of road barricades

With an estimated 115 end-of-road barricades throughout Visalia, a fair amount of maintenance is required each year. Repairs are often needed due to accidents, vandalism, fading from age, and weeds that grow around or in front of the barricades.





## Long line striping



Lane striping is completed by a contractor using a specialized paint striping truck designed to efficiently paint long, straight lines. The city is divided into quadrants, and each year the contractor stripes the quadrant diagonally opposite (caddy-corner) to that year's reclamite project. This rotation ensures all city street lines are refreshed every other year. Our in-house paint crew use a small walk behind paint machine to restripe small sections when there has been pavement repairs by the Street Department.



## Pavement markings and curb painting

During the summer months, the paint crew is responsible for refreshing the city's pavement markings and curb paint. We focus on areas where the paint has become old or faded. The only exceptions are downtown areas and school zones, which we aim to repaint every year.





School crosswalks, stop bars, curb paint and parking stalls all need to be refreshed annually





## Everyone's favorite time of year

At the end of November, our team installs all the Christmas decorations throughout the downtown area. Once the holiday season ends, we return to remove and store them for next year.





# Thank you

Traffic Safety

